

# What size battery for 100w solar panel





## Overview

---

100W solar panels are compatible with 12V batteries. You can choose a 50 amp or 100 amp Lead-Acid or Lithium-ion battery for 100W solar panels. You will have to use a battery double the capacity of your solar panel's output.

100W solar panels are compatible with 12V batteries. You can choose a 50 amp or 100 amp Lead-Acid or Lithium-ion battery for 100W solar panels. You will have to use a battery double the capacity of your solar panel's output.

Daily Energy Generation: A 100-watt solar panel can produce up to 500 watt-hours daily with 5 hours of sunlight; understanding this helps in battery sizing. Battery Capacity Requirements: Opt for a battery with at least 100 amp-hours (Ah) for optimal performance with a 100-watt solar panel.

Many types and sizes of batteries are available on the market, but not all are suitable for 100W solar panels. You will find a handful of options for them. Choosing the correct battery can be intimidating since much calculation and consideration are involved here. But don't worry for a bit as I'm.

When selecting a battery for your 100-watt solar panel, several factors come into play. Let's break down the key considerations. There are several types of batteries suitable for solar energy systems. Here are the most common: Lead-Acid Batteries: These are the most traditional type of battery used.

100-watt solar panels are much smaller than most solar panels that are used in homes. Typically, 100-watt solar panels have size measurements of around 47 x 21.3 x 1.4 inches. The best way to use your 100-watt solar panel is to hook it up to the right battery. Batteries store excess power to keep.

A 100W solar panel requires a 100ah 12V battery minimum. Solar panel output can range from 400-900 watts so the battery capacity must be at least 1000 watts. 100ah is equal to 1200 watts so it is sufficient. To find out the right battery size, you have to know how much power your solar panel.

But what matters more is its energy content, expressed in watt-hours (Wh), calculated by multiplying capacity by voltage (e.g., a 100 Ah battery at 12 V



holds 1,200 Wh). Depth of discharge (DoD): The portion of a battery's total capacity you actually use. With lead-acid technologies, an effective. How many amps does a 100 watt solar panel produce?

The maximum current rating of a 100-watt solar panel is 5.5 – 6 amps. Solar panels produce a number of amps between 50 – 100% of this value under normal conditions.

What battery should I use for a 100 watt solar panel?

For a 100 watt solar panel, a 100 Ah 12V battery would work well. To ensure sufficient storage, your battery should be able to store at least twice the daily output of your solar panel.

Are 100W solar panels compatible with 12V batteries?

100W solar panels are compatible with 12V batteries. You can choose a 50 amp or 100 amp Lead-Acid or Lithium-ion battery for 100W solar panels. You will have to use a battery double the capacity of your solar panel's output. Before everything else, you should also know that a 100W solar panel is compatible with 12V batteries.

Can a 100 watt solar panel charge a 12V battery?

Yes, a 100 watt solar panel can charge a 12V battery. In fact, one 100Ah 12V battery can be fully charged by a 100 watt 12V solar panel. However, charging larger batteries or multiple batteries may take a longer time.

What inverter do I need for a 100 watt solar panel?

What size inverter do I need for a 100-watt solar panel?

A safe bet would be to have a 10-amp charge controller for a 100W solar panel with a 12V battery bank. Inverters work to convert the electricity flowing from your battery from direct current (DC) into alternating current (AC).

Can a 100W solar panel charge a 50W battery?

So, if you use a 100W solar panel, you can fully charge a 50W solar panel from zero in 6 hours. A lot of other factors are related to it. However, you can also use a 100W solar panel for a 100Ah battery. But, you will need at least two of them for a better result.



## What size battery for 100w solar panel

---



### How Many Batteries are Needed for a 100W, 500W and 1000W Solar Panel?

One 100Ah 12V battery will power one 100-watt 12V solar panel. You may determine that you require a larger battery or two batteries for your solar setup after assessing your power ...

### What Size Battery for 100 Watt Solar Panel: A Complete Guide to ...

Discover how to choose the ideal battery size for your 100-watt solar panel in our comprehensive guide. We break down key factors like daily energy requirements, battery ...



### [What Size Battery For 100w Solar Panel?](#)

You can choose a 50 amp or 100 amp Lead-Acid or Lithium-ion battery for 100W solar panels. You will have to use a battery double the capacity of your solar panel's output.

### [How Many Batteries Can a 100 Watt Solar Panel](#)

...

In general, a regular size 12-volt 50ah battery with a 20 percent discharge requires at least two hours of charging using a 100W solar panel.



Meanwhile, a 12-volt lead-acid deep-cycle 50 ah battery with 50 percent ...



### What Size Battery Do You Need for a 100W Solar Panel? The ...

Pair a 100Ah lithium battery with your 100W solar panel, and you've got enough juice to power a small off-grid cabin - or at least keep your Netflix binge going through a blackout.

### [How Many Batteries Can a 100 Watt Solar Panel Charge?](#)

In general, a regular size 12-volt 50ah battery with a 20 percent discharge requires at least two hours of charging using a 100W solar panel. Meanwhile, a 12-volt lead ...



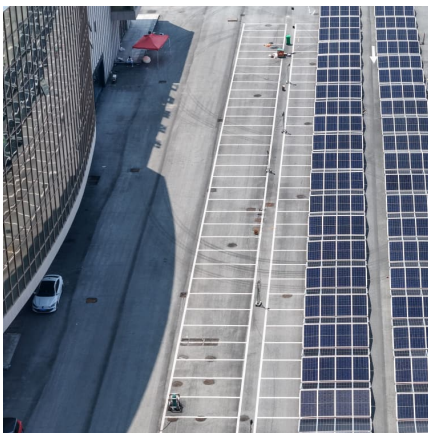
### How Many Batteries Do I Need for a 100 Watt Solar Panel?

A 100 Ah 12V battery provides around 50% usable storage. That is why your battery should be able to store at least twice the daily output of your solar panel. As a general rule of thumb, your ...



## Battery For 100 Watt Solar Panel

In this article, we will explore everything you need to know about selecting the best battery for your 100-watt solar panel system, including types of batteries, sizing, and ...



### [Battery Requirements for 100-Watt Solar Panel](#)

A single 100 Ah 12V battery typically suffices for a single 100-watt solar panel. Under ideal conditions, this basic setup provides adequate storage for the energy produced.

### [How Many Batteries Do I Need for a 100W Solar Panel?](#)

A 100W solar panel requires a 100ah 12V battery minimum. Solar panel output can range from 400-900 watts so the battery capacity must be at least 1000 watts. 100ah is equal to 1200 ...



### [How Many Batteries are Needed for a 100W. 500W ...](#)

One 100Ah 12V battery will power one 100-watt 12V solar panel. You may determine that you require a larger battery or two batteries for your solar setup after assessing your power requirements.



## Contact Us

---

For catalog requests, pricing, or partnerships, please visit:  
<https://conrad.edu.pl>