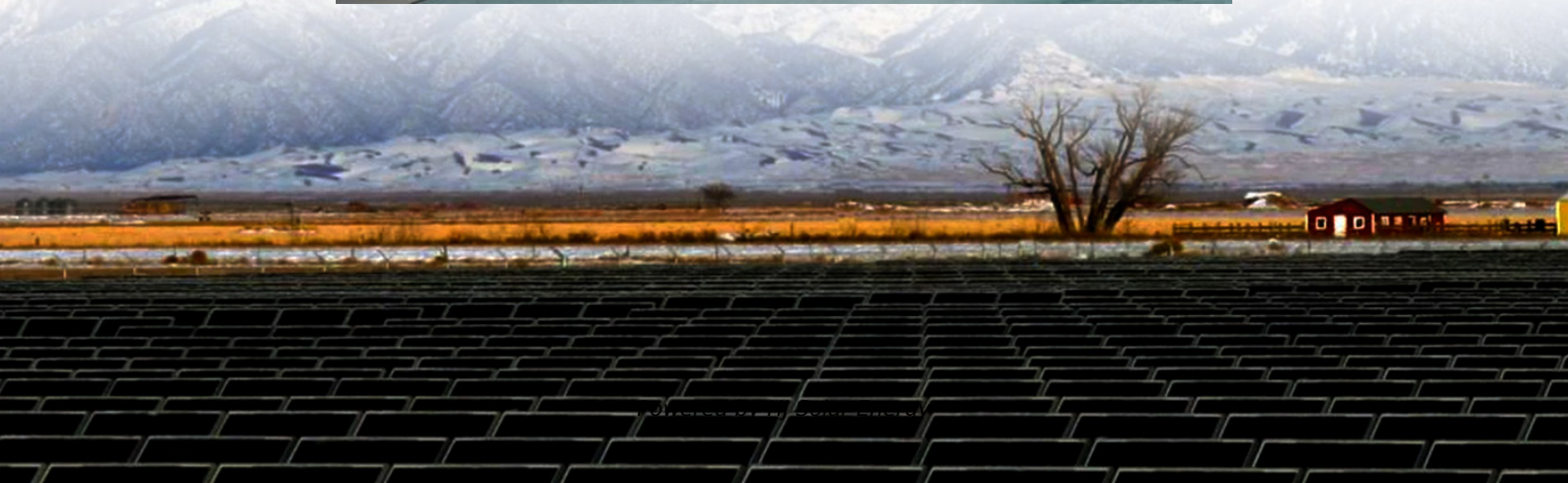


What is the name of an electric vehicle that can be equipped with a battery storage basket





Overview

Fuel cell electric vehicles (FCEVs) use a highly efficient electrochemical process to convert hydrogen into electricity, which powers an electric motor.

Battery electric vehicles (BEVs)—also referred to as “all-electric vehicles”—run on electricity only and are recharged from an external power source.

Plug-in hybrid electric vehicles (PHEVs) also use batteries to power an electric motor and can be recharged from an external power source, but they incorporate a smaller internal combustion engine that can recharge the battery (or in some models, directly power the wheels) to allow for longer driving ranges. PHEVs can usually drive moderate.

use both electric motors and internal combustion engines, and are not considered pure or all-electric vehicles. Hybrid electric vehicles whose batteries can be charged externally are called electric vehicles (PHEV) and run as BEVs during their mode. PHEVs with a are also called range-extended electric vehicles (REEVs), such as the a.

Bidirectional electric vehicles (EV) employed as mobile battery storage can add resilience benefits and demand-response capabilities to a site’s building infrastructure.

Bidirectional electric vehicles (EV) employed as mobile battery storage can add resilience benefits and demand-response capabilities to a site’s building infrastructure.

Electric mobility includes light-duty automobiles, medium- and heavy-duty electric vehicles, electric micromobility devices, and transit vehicles. The EV market is evolving rapidly, with models available in a range of vehicle types, from compact cars and sedans to sport utility vehicles (SUVs) and.

A battery electric vehicle (BEV), pure electric vehicle, only-electric vehicle, fully electric vehicle or all-electric vehicle is a type of electric vehicle (EV) that uses electrical energy exclusively from an on-board battery pack to power one or more electric traction motors, on which the vehicle.

They use electric batteries to store the energy that powers an electric motor.



Charging electric car batteries requires a connection to an electricity source, either through a household electrical outlet or at public charging stations. This type of vehicle has gained popularity due to its higher.

Electric vehicles (EVs) have a battery instead of a gasoline tank, and an electric motor instead of an internal combustion engine. Plug-in hybrid electric vehicles (PHEVs) are a combination of gasoline and electric vehicles, so they have a battery, an electric motor, a gasoline tank, and an.

There are four types of electric vehicles available: Battery Electric Vehicle (BEV): Fully powered by electricity. These are more efficient compared to hybrid and plug-in hybrids. Hybrid Electric Vehicle (HEV): The vehicle uses both the internal combustion (usually petrol) engine and the.

The vehicle is powered by the internal combustion engine when the battery is mostly discharged while accelerating quickly, or when there are heavy heating or cooling demands. The converse is also applicable for some large PHEVs; at the job site, energy is used to run auxiliary equipment or control. Do electric vehicles have a battery?

Electric vehicles (EVs) have a battery instead of a gasoline tank, and an electric motor instead of an internal combustion engine. Plug-in hybrid electric vehicles (PHEVs) are a combination of gasoline and electric vehicles, so they have a battery, an electric motor, a gasoline tank, and an internal combustion engine.

What is a PHEV with a series powertrain called?

PHEVs with a series powertrain are also called range-extended electric vehicles (REEVs), such as the Chevrolet Volt and Fisker Karma. Plug-in electric vehicles (PEVs) are a subcategory of electric vehicles that includes battery electric vehicles (BEVs) and plug-in hybrid vehicles (PHEVs).

What is a battery electric vehicle (BEV)?

(VectorMine/stock.adobe.com) Battery electric vehicles (BEVs)—also referred to as “all-electric vehicles”—run on electricity only and are recharged from an external power source. They are propelled by one or more electric motors powered by rechargeable battery packs.

How do electric cars work?

Electric Vehicles using BEV technology run entirely on a battery-powered



electric drivetrain. The electricity used to drive the vehicle is stored in a large battery pack which can be charged by plugging into the electricity grid. The charged battery pack then provides power to one or more electric motors to run the electric car.

What is a hybrid electric vehicle called?

Hybrid electric vehicles whose batteries can be charged externally are called plug-in hybrid electric vehicles (PHEV) and run as BEVs during their charge-depleting mode. PHEVs with a series powertrain are also called range-extended electric vehicles (REEVs), such as the Chevrolet Volt and Fisker Karma.

Are hybrid electric vehicles considered EVs?

1 Hybrid electric vehicles (HEVs), powered by a combination of an internal combustion engine with electric motors running off a battery pack for greater efficiency, have batteries that cannot be recharged from an external source, and are not considered EVs.



What is the name of an electric vehicle that can be equipped with a

[Electrified Vehicle Technologies Flashcards, Quizlet](#)

improved battery technology with longer range and faster recharging times Which of the following is an attribute of Battery Electric Vehicles (BEVs) less complex to build Why are lithium-ion ...

[30 Electric Vehicles Quiz Questions and Answers](#)

Electric vehicles (EVs) are automobiles that are powered by one or more electric motors, using electrical energy stored in batteries or other ...



[Rivian R1S Electric SUV: Price, Range & Features](#)

Experience the Rivian R1S, a 7-seat electric SUV built for performance, luxury, sustainability and adventure. Explore specs, price, range and features today.



NISSAN INTELLIGENT POWER

Study with Quizlet and memorize flashcards containing terms like What purpose does Nissan EV's inverter serve? Choose all that apply., What is true of Level 2 charging?, Which type of vehicle ...



[What Is A BEV? \[Battery Electric Vehicle\] , EV- America](#)

These vehicles are also known as only electric, pure, fully electric vehicles. The energy stored is used by battery-powered electric motors and power control systems for ...



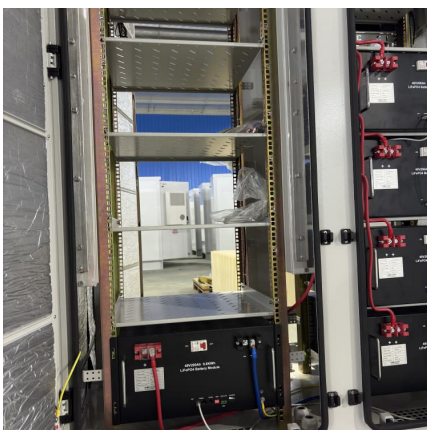
Which of the following vehicle components are equipped on both ...

Both Battery Electric Vehicles (BEVs) and Hybrid Electric Vehicles (HEVs) are equipped with Electric motor generators and HV batteries. While BEVs operate solely on their ...



[Types Of Electric Vehicles , Electric Vehicles , SEAI](#)

A Battery Electric Vehicle or BEV is a vehicle that uses a battery as the sole means of energy storage for the propulsion of the vehicle. A BEV does not have a fossil fuel engine or generator.





Which Electric Cars Have Bidirectional Charging (V2L, ...

The BYD Dolphin is a five-seater electric hatchback made in China. Priced from around \$38,890 before on-road costs, it has up to 427km of ...



Bidirectional Charging and Electric Vehicles for Mobile ...

Bidirectional electric vehicles employed as mobile batteries can be mobilized to a site prior to planned outages or arrive shortly after an unexpected power ...

[hybrids 055 midterm/final Flashcards , Quizlet](#)

A battery high-rate discharge (load capacity) test is being performed on a 12-volt battery. Technician A says that a good battery should have a voltage reading of higher than 9.6 volts ...



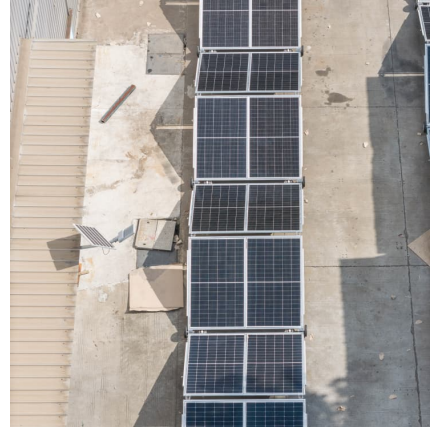
[NISSAN ELECTRIC VEHICLE COMPONENTS Flashcards , Quizlet](#)

Study with Quizlet and memorize flashcards containing terms like What components of an internal combustion engine are not necessary with the EV system?, What components are part of ...



Vehicle classification by propulsion system

EV - Electric Vehicle - vehicle drives on electrical energy using at least one electric motor
PEV - Plug-in Electric Vehicle - vehicle has a socket and can be propelled by electric power. BEV - ...



Electric vehicle

How it works Electricity is transferred from a battery to a controller. [5] The controller then sends the electricity to the electric motors when needed. The accelerator is connected to a variable ...

Chapter 91: introduction to Hybrid Vehicles

A) Medium hybrid B) Strong hybrid C) Mild hybrid D) Full hybrid, Which type of hybrid is capable of propelling the vehicle by just using the electric motor? A) BAS type B) Strong (full) hybrid C) ...



Electric & Plug-In Hybrid Electric Vehicles , US EPA

Plug-in Hybrid Electric Vehicle (PHEV): Uses both an internal combustion engine and a battery charged from an external socket (they have a plug). This means ...



Interim Guidance for Electric and Hybrid-Electric Vehicles ...

Interim Guidance for Electric and Hybrid-Electric Vehicles Equipped With High Voltage Batteries
The National Highway Traffic Safety Administration (NHTSA) is committed to ensuring the ...

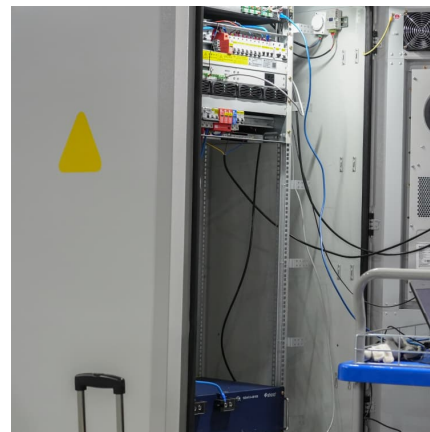


[How To Power Your House With An Electric Car](#)

Electric vehicles have come a long way in the last few years, gaining longer range estimates, better technology, and more advanced features that rely on their ...

EV POWERTRAIN Flashcards , Quizlet

Study with Quizlet and memorize flashcards containing terms like Which type of vehicle charging is not available for home use?, What is true of e-4ORCE all-wheel drive?, What does B-Mode ...



[Electric vehicle charging systems midterm Flashcards](#)

Which of the following describes a plug-in electric vehicle that runs on batteries until nearly depleted, then switches over to an ICE generator to extend the battery range?



[ssevaqwb addressing ev questions Flashcards, Quizlet](#)

Study with Quizlet and memorize flashcards containing terms like Stellantis PHEVs come equipped with which type of standard charging equipment?, A Level 2 charging station has a ...

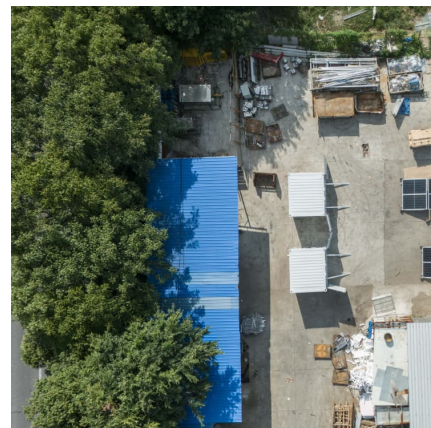


[Top 10 Electric Vehicle 4-Wheelers In India](#)

The range of an electric 4-wheeler in India varies depending on the model and battery capacity. Most electric 4-wheelers in India have a range of 100-400 km ...

[4 Types of Electric Vehicle Batteries \(Li-ion, NiMH\)](#)

The energy to power the electric motor is provided by the battery. When the battery level of the vehicle goes down, it can be charged by plugging ...





[Advanced Chassis Final Flashcards . Quizlet](#)

Study with Quizlet and memorize flashcards containing terms like The hybrid vehicle electric motor is usually a(an) _____ type motor., Which sensor can be tested by unbolting the ...

Solved: Which of the following vehicle components are equipped ...

Which of the following vehicle components are equipped on both a Battery Electric Vehicle (BEV) and a Hybrid Electric Vehicle (HEV) ? (Choose all that apply, then select submit.)



[Electric Cars, Solar & Clean Energy . Tesla](#)

Tesla accelerates the transition to sustainable energy with electric cars, solar products, and integrated renewable energy solutions for homes and businesses.

Electric Veh Charg Sys

A partial zero emissions vehicle (PZEV) is defined as which of the following? a.A gas-engine vehicle that has zero evaporative emissions from its fuel system b.A plug-in electric vehicle c.A ...



[brakes chapter 19, 20 Flashcards , Quizlet](#)

Technician A says that a front-wheel-drive hybrid electric vehicle can only generate electricity during braking from the Drive wheel motor (s). Technician B says that the anti-lock braking ...

Contact Us

For catalog requests, pricing, or partnerships, please visit:
<https://conrad.edu.pl>