

# What is the maximum energy storage battery capacity





## Overview

---

Numerous factors dictate the maximum battery energy storage capacity, including environmental conditions, battery age, and discharge rates. Temperature fluctuations can significantly impact battery performance, reducing the effective capacity if batteries are subjected to extreme conditions.

Numerous factors dictate the maximum battery energy storage capacity, including environmental conditions, battery age, and discharge rates. Temperature fluctuations can significantly impact battery performance, reducing the effective capacity if batteries are subjected to extreme conditions.

The maximum battery energy storage capacity is influenced by multiple factors, including technology type, design specifications, and intended applications. 1. Lithium-ion batteries typically exhibit capacities ranging from several hundred watt-hours (Wh) for small devices to several megawatt-hours.

The capacity of a battery is the amount of usable energy it can store. This is the energy that a battery can release after it has been stored. Capacity is typically measured in watt-hours (Wh), unit prefixes like kilo (1 kWh = 1000 Wh) or mega (1 MWh = 1,000,000 Wh) are added according to the. What is battery maximum capacity?

Battery maximum capacity is foundational in lithium-ion cell design, manufacturing, and application. At the core of every battery-powered system—an electric vehicle, energy storage unit, or industrial equipment—lies the question: How much energy can this battery store and deliver reliably over time?

Part 1.

Why is battery maximum capacity important?

Variations in manufacturing tolerances, usage patterns, and thermal exposure



can lead to different aging rates, even among identical cells. Battery maximum capacity defines how much energy a lithium cell can store and deliver reliably, key to EVs, storage units, and industrial use.

What are the technical measures of a battery energy storage system?

The main technical measures of a Battery Energy Storage System (BESS) include energy capacity, power rating, round-trip efficiency, and many more. [Read more.](#)

What is battery storage?

Battery storage is a technology that enables power system operators and utilities to store energy for later use.

How long does a battery storage system last?

For example, a battery with 1 MW of power capacity and 4 MWh of usable energy capacity will have a storage duration of four hours. Cycle life/lifetime is the amount of time or cycles a battery storage system can provide regular charging and discharging before failure or significant degradation.

What is battery energy storage systems (Bess)?

Learn about Battery Energy Storage Systems (BESS) focusing on power capacity (MW), energy capacity (MWh), and charging/discharging speeds (1C, 0.5C, 0.25C). Understand how these parameters impact the performance and applications of BESS in energy managemen



## What is the maximum energy storage battery capacity

---



### storage

As I understand it, the Vanadium-Boride-Air battery has a theoretical energy density on the order of 27kwh/liter, I forget what that worked out to in kwh/kg, but petrol's only ~10kwh/L. It's not ...

### The Top 5: Largest Battery Energy Storage Systems Worldwide

The 400MW/1,600MWh Moss Landing Energy Storage Facility is the world's biggest battery energy storage system (BESS) project so far. The massive energy facility was ...



### Solar, battery storage to lead new U.S. generating capacity ...

Battery storage. In 2025, capacity growth from battery storage could set a record as we expect 18.2 GW of utility-scale battery storage to be added to the grid. U.S. battery storage already ...

### Understanding Battery Storage Capacity: How Much Do You ...

When it comes to energy storage, understanding battery storage capacity is essential for homeowners and businesses alike. With the



growing reliance on renewable ...

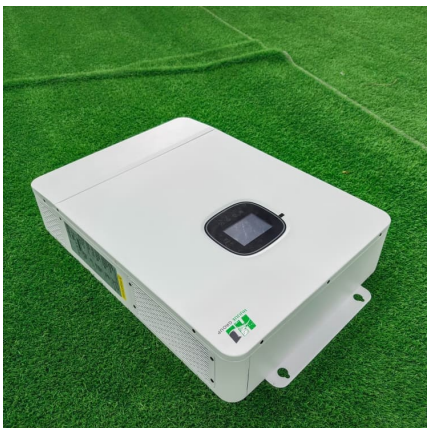
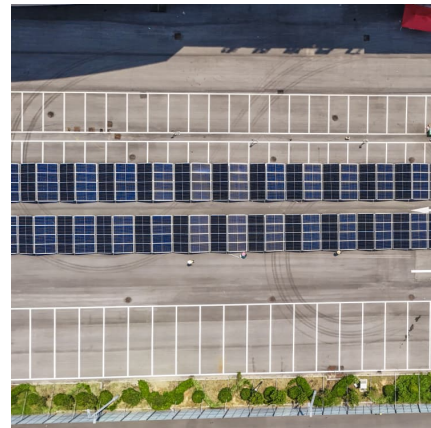


## Energy Storage

Sources: U.S. Energy Information Administration, Form EIA-860M, Preliminary Monthly Electric Generator Inventory; U.S. Energy Information Administration, Form EIA-860, Annual Electric ...

### [Grid-Scale Battery Storage: Frequently Asked Questions](#)

Storage duration is the amount of time storage can discharge at its power capacity before depleting its energy capacity. For example, a battery with 1 MW of power capacity and 4 MWh ...



### [How Do You Calculate Maximum Battery Capacity?](#)

Learn how to calculate the maximum battery capacity for your devices with this simple guide. Understand key terms, formulas, and methods to ensure optimal battery ...



### [The Complete Guide to Battery Capacity - Hinen](#)

As technology advances, high capacity batteries are becoming increasingly vital, offering longer usage times and greater efficiency. Knowing ...



### **What Is the Difference Between Battery Capacity and Rated Capacity**

Battery capacity and rated capacity are not the same. While both measure energy storage, they serve different purposes in evaluating a battery's performance. Many ...

### [A Practical Guide to Calculating Home Battery ...](#)

Calculating home battery storage capacity is crucial for ensuring reliable backup power during outages, lowering electricity bills, and enabling ...



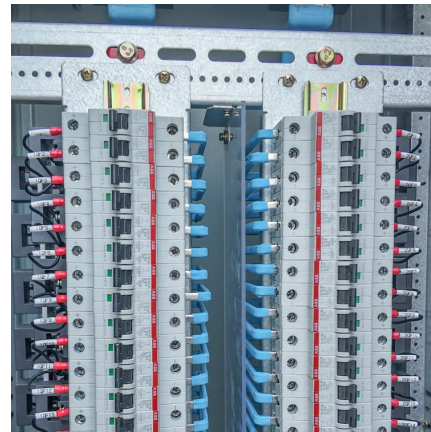
### [10.2 Key Metrics and Definitions for Energy Storage](#)

Storage Capacity Capacity essentially means how much energy maximum you can store in the system. For example, if a battery is fully charged, how many watt-hours are put in there? If the ...



### Understanding Energy Storage Duration

Battery Energy Storage Systems (BESS): Lithium-ion BESS typically have a duration of 1-4 hours. This means they can provide energy services at their ...



### **i am your battery storage guide**

How much energy a battery can store is referred to as its energy capacity or battery capacity (Figure 3). The more battery capacity it has the longer it can supply a load.

### Battery Maximum Capacity: Why It Matters for Lithium...

Battery maximum capacity refers to the total energy a lithium-ion battery can store when fully charged and in optimal condition. Depending on ...





### Grid-Scale Batteries 101

The capacity of grid-scale batteries is typically measured in megawatt hours (MWh), which explains how long the battery can replace a specific amount of generated ...

### Electricity explained Energy storage for electricity generation

Energy storage for electricity generation An energy storage system (ESS) for electricity generation uses electricity (or some other energy source, such as solar-thermal energy) to charge an ...



### [What is the maximum battery energy storage capacity?](#)

Numerous factors dictate the maximum battery energy storage capacity, including environmental conditions, battery age, and discharge rates. ...

### [Battery Energy Storage System \(BESS\) . The Ultimate Guide](#)

Principal BESS characteristics Rated Power Capacity Rated Power Capacity is the total discharge capability (usually in megawatts (MW)) or the maximum rate of discharge the BESS can ...



### [Capacity Market Rules for Energy Storage Resources](#)

What will an Energy Storage Resource need to be qualified to participate in the Capacity Market? Capability to meet the existing 4-hour minimum run-time requirement Energy Storage ...



### **What is Battery Storage Capacity?**

Battery storage capacity refers to the maximum amount of electrical energy a battery can store. It indicates the battery's ability to hold and deliver energy ...



### [What is the maximum amount of energy that can be ...](#)

Understanding battery capacity is essential for approximately calculating the maximum energy storage potential. This metric, typically ...





## Exploring the Theoretical Energy Limits of Lithium-Ion ...

Theoretical energy limits define the maximum energy a lithium-ion battery can store and deliver under ideal conditions. These limits, ...



## 10.2 Key Metrics and Definitions for Energy Storage

Storage Capacity Capacity essentially means how much energy maximum you can store in the system. For example, if a battery is fully charged, how many ...

## Understanding Usable Energy in Battery Energy Storage ...

The energy capacity rating of a battery energy storage system (BESS) indicates the amount of electrical energy that can be stored and provided back to the grid. Many factors affect the ...



## Contact Us

---

For catalog requests, pricing, or partnerships, please visit:  
<https://conrad.edu.pl>