

# What is the box of flywheel energy storage





## Overview

---

First-generation flywheel energy-storage systems use a large steel flywheel rotating on mechanical bearings. Newer systems use carbon-fiber composite rotors that have a higher tensile strength than steel and can store much more energy for the same mass.

Flywheel energy storage (FES) works by accelerating a rotor ( ) to a very high speed and maintaining the energy in the system as . When energy is extracted from the system, the flywheel's rotational.

A typical system consists of a flywheel supported by connected to a . The flywheel and sometimes.

TransportationAutomotiveIn the 1950s, flywheel-powered buses, known as .

- • • - Form of power supply
- - High-capacity electrochemical capacitor .

GeneralCompared with other ways to store electricity, FES systems have long lifetimes (lasting decades).

Flywheels are not as adversely affected by temperature changes, can operate at a much wider temperature range, and are not subject to many of the common failures of chemical . They are also less potentially damaging to the environment, being.

- Beacon Power Applies for DOE Grants to Fund up to 50% of Two 20 MW Energy Storage Plants, Sep. 1, 2009
- Sheahen.

Flywheel energy storage systems consist of a rotor (flywheel), a motor/generator, magnetic bearings, and a containment system. The rotor, typically made from advanced materials like carbon fiber, is enclosed in a vacuum chamber to minimize air friction.

Flywheel energy storage systems consist of a rotor (flywheel), a motor/generator, magnetic bearings, and a containment system. The rotor, typically made from advanced materials like carbon fiber, is enclosed in a vacuum chamber to minimize air friction.



Flywheel energy storage (FES) works by accelerating a rotor (flywheel) to a very high speed and maintaining the energy in the system as rotational energy. When energy is extracted from the system, the flywheel's rotational speed is reduced as a consequence of the principle of conservation of.

A flywheel energy storage system is a mechanical device used to store energy through rotational motion. When excess electricity is available, it is used to accelerate a flywheel to a very high speed. The energy is stored as kinetic energy and can be retrieved by slowing down the flywheel.

This energy is used to set the flywheel in motion. Energy storage: As the flywheel spins, it stores kinetic energy. The energy can be stored as long as the flywheel continues to spin. The flywheel is often located in a vacuum environment and mounted on magnetic bearings to reduce energy loss.

FESS is used for short-time storage and typically offered with a charging/discharging duration between 20 seconds and 20 minutes. However, one 4-hour duration system is available on the market. FESS is typically positioned between ultracapacitor storage (high cycle life but also very high storage).

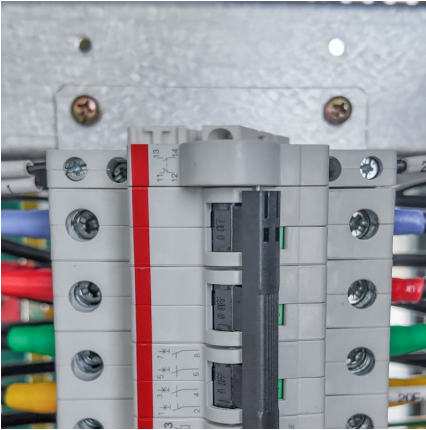
Flywheel energy storage is a technology that utilizes a rotating mass to store energy kinetically and release it when required. 1. It operates based on the principle of angular momentum, where energy is stored in the form of a spinning wheel or rotor. 2. The system can quickly convert energy to.

Imagine a giant, supercharged spinning top that stores electricity like a battery— that's flywheel energy storage in a nutshell. This 21st-century "mechanical battery" uses rotational kinetic energy to store electricity, offering 90% efficiency and 20+ year lifespans [1] [8]. Unlike chemical.



## What is the box of flywheel energy storage

---



### **The Whole Process of Flywheel Energy Storage: From Basics to ...**

What Is Flywheel Energy Storage and Why Should You Care? Imagine a giant, supercharged spinning top that stores electricity like a battery-- that's flywheel energy storage ...

### **Design and Experimental Study of a Toroidal Winding Flywheel Energy**

Design cost and bearing stability have always been a challenge for flywheel energy storage system (FESS). In this study, a toroidal winding flywheel energy storage motor ...



### **A review of flywheel energy storage systems: state of the art ...**

This paper gives a review of the recent Energy storage Flywheel Renewable energy Battery Magnetic bearing developments in FESS technologies. Due to the highly ...

### **Flywheel Energy Storage Market , Global Market Analysis Report**

14 ????· Flywheel Energy Storage Market  
Flywheel Energy Storage Market Size and Share  
Forecast Outlook 2025 to 2035 The flywheel



energy storage market is projected to grow from ...



### [Energy Storage Flywheels and Battery Systems](#)

Piller is a market leader of kinetic energy storage ranging up to 60MJ+ per unit. The Piller POWERBRIDGE(TM) storage systems have unique design techniques ...



### **A REVOLUTION IN ENERGY STORAGE**

Revolutionizing energy storage with our innovative flywheel energy storage systems (FESS) Only 4-hour+ FESS on the market Safe, reliable, simple and flexible energy storage alternative ...



### [Flywheel Energy Storage: Challenges in Microgrids](#)

While flywheel energy storage systems offer several advantages such as high-power density, fast response times, and a long lifespan, they also face challenges in microgrid applications. This ...





## Flywheel energy storage systems: A critical review on ...

Energy storage systems (ESSs) are the technologies that have driven our society to an extent where the management of the electrical network ...



## [Is this \\*FINALLY\\* a Break for Flywheel Energy Storage?](#)

Flywheels are an age old technology at this point, but has Torus Energy finally made them work for the home generation market? Sub count: 438 Timestamps: 0:00 |

## [Flywheel Energy Storage , Efficient Power Solutions](#)

Flywheels can store rotational energy efficiently and respond rapidly when needed, making it the perfect short-term energy storage solution.



## [Flywheel Energy Storage: The Key To Sustainable ...](#)

Flywheel energy storage is a promising technology that can provide fast response times to changes in power demand, with longer lifespan and higher efficiency ...



What is Flywheel Energy Storage? (with picture)

The largest problem with flywheel energy storage is the potential for damage and injury if a charged flywheel is broken. These systems store energy as kinetic, rotational ...



**What is the principle of flywheel energy storage , NenPower**

The flywheel energy storage principle is characterized by its mechanical storage capabilities, which enables efficient energy management across sectors, including renewable ...

Grid-Scale Flywheel Energy Storage Plant

Flywheel systems are kinetic energy storage devices that react instantly when needed. By accelerating a cylindrical rotor (flywheel) to a very high speed and maintaining the energy in ...





### [Flywheel Systems for Utility Scale Energy Storage](#)

Flywheel Systems for Utility Scale Energy Storage is the final report for the Flywheel Energy Storage System project (contract number EPC-15-016) conducted by Amber Kinetics, Inc.

### **A review of flywheel energy storage rotor materials and structures**

The flywheel is the main energy storage component in the flywheel energy storage system, and it can only achieve high energy storage density when rotating at high ...



### [Flywheel Energy Storage: A High-Efficiency Solution](#)

Flywheel energy storage is an exciting solution for efficient and sustainable energy management. This innovative technology offers high ...



### **Flywheel Energy Storage Systems and their Applications: A ...**

Flywheel energy storage systems are suitable and economical when frequent charge and discharge cycles are required. Furthermore, flywheel batteries have high power density and a ...



### SmartBox Micro-Grid Development

SmartBox MicroGrid utilizes flywheel energy storage (FES) as the front end energy storage and power supply. These systems are extremely fast, 4-quadrant switching at  $\ll 0.1$  cycle, and ...



### [What is a flywheel energy storage? , NenPower](#)

Flywheel energy storage is a technology that utilizes a rotating mass to store energy kinetically and release it when required. 1. It operates based on the principle of angular ...



### Beacon Power

Beacon flywheel storage systems have much faster ramp rates than traditional generation and can correct imbalances sooner with much greater accuracy and efficiency. In fact, Beacon ...





### What is the energy storage efficiency of a flywheel?

Flywheel energy storage systems are mechanical devices that store energy in the form of kinetic energy. The basic principle involves accelerating a rotor in a low-friction ...



### What is a flywheel for energy storage devices?

A flywheel serves as an innovative energy storage solution, utilizing its rotational motion to efficiently absorb, store, and supply energy. ...

## Contact Us

---

For catalog requests, pricing, or partnerships, please visit:  
<https://conrad.edu.pl>