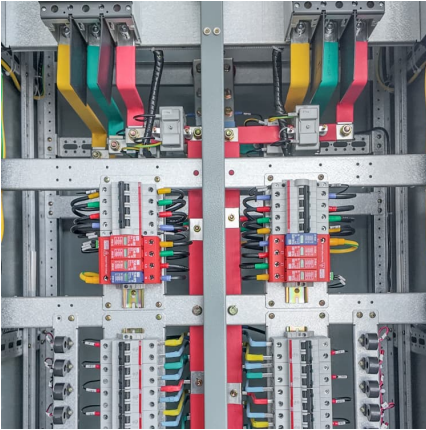


Tailings energy storage power station working principle video





Tailings energy storage power station working principle video



Application and analysis of battery storage power station

The market for energy storage, especially battery storage power station, is considered to have a broad market space and diverse application ...

[Pumped Storage Circuit Principle Video](#)

The upper reservoir, Llyn Stwlan, and dam of the Ffestiniog Pumped Storage Scheme in North Wales. The lower power station has four water turbines which generate 360 MW of electricity ...



Principle of lithium battery for power station energy storage

A battery energy storage system (BESS) is an electrochemical device that charges (or collects energy) from the grid or a power plant and then discharges that energy at a later time to ...



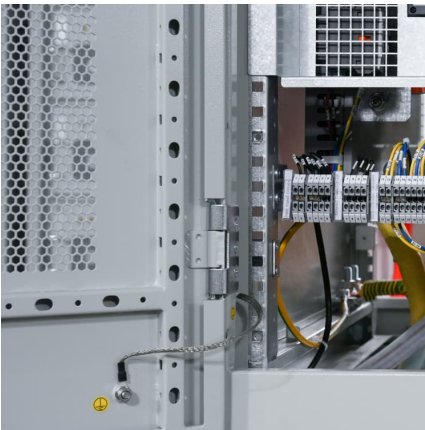
Working

Working principle of lithium-ion battery energy storage power station. The working principle of emergency lithium-ion energy storage vehicles or megawatt-level fixed energy storage power ...



working principle diagram of tailings energy storage power station

The Minle Standalone Energy Storage Power Station (500MW/1000MWh) is located in Gansu Province, China. This project spans over 10.4 hectares, making it the l



[Tailings - From Concept to Closure training video](#)

This training video will provide guidance to personnel involved in the management and operation of tailings storage facilities that will facilitate the adoption of accepted best practices for the management of mine tailings.



How Energy Storage Power Stations Work: The Backbone of ...

You know, as renewable energy adoption skyrockets globally, there's a silent hero making it all possible: energy storage power stations. But how do these technological marvels actually ...



What are the tailings energy storage power stations?

As we look towards a rapidly evolving energy landscape, the significance of tailings energy storage power stations becomes increasingly ...



Proceedings of

The solar-storage integrated system applied in the tailings ecological restoration process includes two parts: a photovoltaic generator set and an energy storage unit. The input energy is solar ...

Hydro Power Plant: Definition, Layout, Working Principle, Site

In this article we will study Definition, Layout, Working, Advantages, Disadvantages, and Application [Notes with PDF] of Hydro Power Plant.



Working principle of centralized battery energy storage ...

The function of the BMS is to carry out real-time monitoring of the operation status of each component of the energy storage power station [89], including state estimation, short circuit ...



[What is Battery Energy Storage System \(BESS\) and ...](#)

The operating principle of a battery energy storage system (BESS) is straightforward. Batteries receive electricity from the power grid, straight from ...



The Ultimate Guide to Creating an Engaging Energy Storage ...

Enter energy storage power stations--the unsung heroes of modern electricity grids. As the global energy storage market balloons into a \$33 billion industry [1], creating a killer explanation video ...

[New energy storage power station principle video](#)

The establishment of a new power system with "new energy and energy storage" as the main body puts forward new requirements for high-power, large-capacity, and long-term energy ...



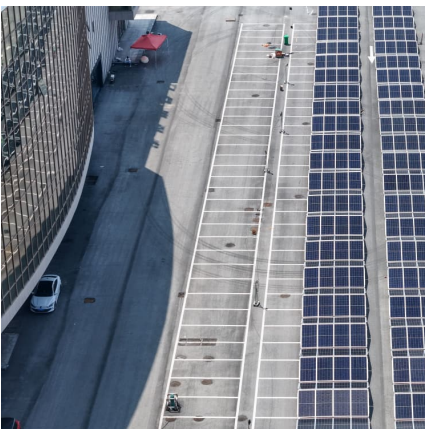


[Working principle of power grid energy storage station](#)

A battery energy storage system (BESS) or battery storage power station is a type of energy storage technology that uses a group of batteries to store electrical energy. Battery storage is ...

[Battery storage power station - a comprehensive guide](#)

This article provides a comprehensive guide on battery storage power station (also known as energy storage power stations). These facilities play a crucial ...



[Working Principle of Energy Storage Power Station](#)

An energy storage power station is a facility that stores energy for later use. It plays a crucial role in balancing the power grid, providing backup power, and integrating ...

Working principle of damless water storage power station

How does a pumped storage plant work? The basic operating principle is similar for all of them: water flows through a turbine to generate electricity. However, unlike run-of-river or reservoir ...



[Video: 3D Animation of Industrial Gas Turbine ...](#)

Industrial gas turbines from MAN Diesel & Turbo cover the 7 -13 MW range. This animation explains the working principle of these heavy duty ...



[How do pumped storage power plants work?](#)

Pumped storage power plants (PSPP) allow you to store clean energy that is produced from renewable energy sources (RES). Therefore, it is an ideal solution for power ...



[What you need to know about dewatering tailings , Weir](#)

Why you should dewater your tailings The foremost benefit of dewatering tailings is the reduction of water that needs to be transported from a process plant to a tailings ...





How Energy Storage Generators Work: A Video-Based Guide for ...

Let's cut to the chase: if you're here, you're probably either an engineer, a renewable energy newbie, or a homeowner tired of blackouts. Maybe you watched an energy ...



[Gravity energy storage technology and applications](#)

The principle of gravity energy storage is similar to that of pumped storage power plant. It mainly relies on gravity to generate potential energy to store energy. It ...

eastcoastpower

Working principle of hydroelectric power plant In this power plant production of electricity depends upon the highest water from ground level volume of water flowing per unit time efficiency of ...



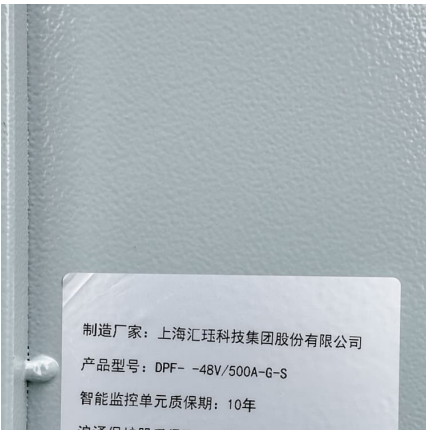
CN118157209A

The invention discloses an integrated system and a control method for an ecological restoration photo-electricity storage station of tailings. The problems of tailing treatment and renewable ...



Tailings Energy Storage Power Station

In this paper, the life model of the energy storage power station, the load model of the edge data center and charging station, and the energy storage transaction model are constructed.



Working principle of tailings energy storage power station

wer station (also known as energy storage power stations). These facilities play a crucial role in mod rn power grids by storing electrical energy for later use. The guide covers the ...

Working principle of 10kV energy storage power station

The hydraulic turbines can be put on and off at any moment, where as the nuclear power plant and steam power plant lack this facility. Power is continuously available on demand and the ...





Unlocking the Power: Energy Storage Principle of ...

Meet the energy storage principle of pseudocapacitors - the unsung hero behind rapid energy transfers. Unlike traditional batteries that sip power like a fine wine, ...

Working principle of energy storage power plant

Overview
Basic principle
Types
Economic efficiency
Location requirements
Environmental impact
Potential technologies
History
Pumped-storage hydroelectricity (PSH), or pumped ...



Contact Us

For catalog requests, pricing, or partnerships, please visit:
<https://conrad.edu.pl>