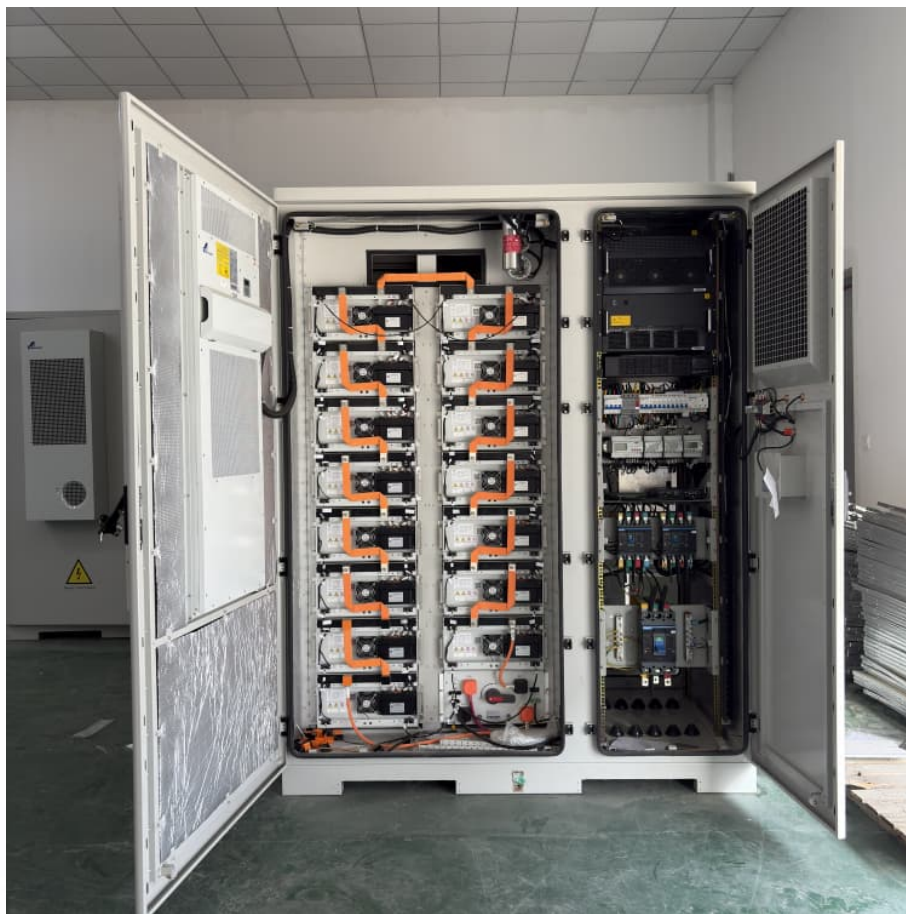


Solar regulator for agm battery





Solar regulator for agm battery



Adventurer 30 Amp 12V PWM Solar Charge Controller LCD ...

Integrating highly efficient PWM charging, the Adventurer-Li increases battery longevity by regulating the charge flowing from the solar panels to the battery bank. It features ...

VEVOR 40A MPPT Solar Charge Controller, 12V / 24V Auto DC Input, Solar

The solar charge controller can handle charging currents of up to 40A and supports a maximum solar panel power of 12V 520W / 24V 1040W. It's compatible with various common deep-cycle ...



[15A Waterproof Lithium-Compatible PWM Solar Regulator](#)

Hardkorr's 15A 6-stage PWM smart solar regulator is tough as nails and designed to work perfectly with our range of 12v solar panels. This smart regulator will optimally charge a range ...

[Explained] Solar Charge Controller Settings For AGM Battery

Setting solar charge controller settings for AGM batteries is crucial. Learn how to adjust maximum current, absorption voltage, float



voltage, equalization voltage, and bulk ...



Renogy Voyager 20A 12V/24V PWM Waterproof Solar Charge Controller ...

The Voyager PWM Waterproof Controller supports both 12V and 24V systems and can automatically identify system voltage once connected to a Gel, AGM, or Flooded battery bank.

Solar Regulators

REDARC's solar regulators work with multiple deep cycle batteries, including AGM, Standard and Calcium, and they're ideal for permanent installation or for portable systems.



[\[Explained\] Solar Charge Controller Settings For AGM...](#)

Setting solar charge controller settings for AGM batteries is crucial. Learn how to adjust maximum current, absorption voltage, float voltage, equalization voltage, and bulk voltage offset for optimal battery performance.





Solar Charge Controller Settings

To get the best out of your AGM battery, it's essential to adjust your solar charge controller settings following the manufacturer's recommendations. The controller settings will ...



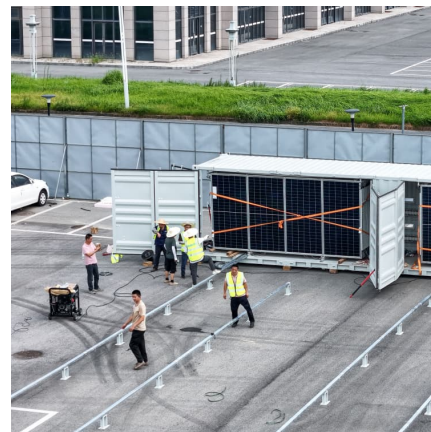
[VEVOR 40A MPPT Solar Charge Controller, 12V /](#)

...

??1%??· The solar charge controller can handle charging currents of up to 40A and supports a maximum solar panel power of 12V 520W / 24V 1040W. It's compatible with various common deep-cycle sealed batteries (AGM), gel ...

SOLPERK 8A 12V Solar Charge Controller with LED Display, ...

[Compatibility] This solar panel charge controller is designed for 12V solar panels with a maximum current of 8A, and 12V rechargeable batteries. It works with 12V batteries ...



[iTechworld PWM Solar Charge Controller 30A 12/24V](#)

Description Specifications The new intelligent Solar Regulator from iTechworld allows you to select a lithium profile for charging. This means you can charge ...

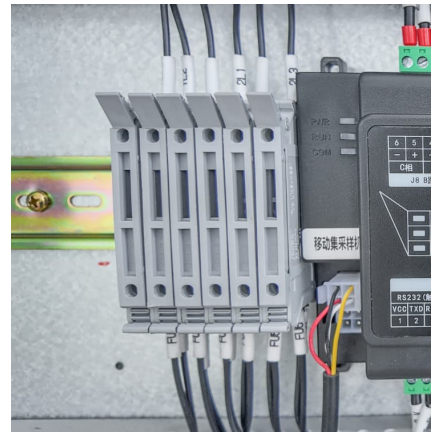


[15A Waterproof Lithium-Compatible PWM Solar](#)

...

Hardkorr's 15A 6-stage PWM smart solar regulator is tough as nails and designed to work perfectly with our range of 12v solar panels. This smart regulator will optimally charge a range of battery types, including AGM, Gel, Calcium, Wet

...

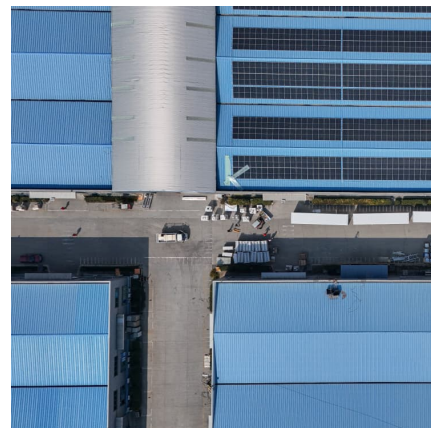


[Renogy Voyager 20A 12V/24V PWM Waterproof Solar ...](#)

The Voyager PWM Waterproof Controller supports both 12V and 24V systems and can automatically identify system voltage once connected to a Gel, AGM, or Flooded battery bank.

[iTechworld PWM Solar Charge Controller 30A 12/24V](#)

Description Specifications The new intelligent Solar Regulator from iTechworld allows you to select a lithium profile for charging. This means you can charge your iTECH120 more ...





Adventurer 30 Amp 12V PWM Solar Charge Controller LCD Display Regulator

Integrating highly efficient PWM charging, the Adventurer-Li increases battery longevity by regulating the charge flowing from the solar panels to the battery bank. It features an LCD ...

Solar Charge Controller Settings

Install the controller on a well-ventilated and flat surface. While running, the controller will be heated. This controller is suitable for lithium batteries. All kinds of lead ...



Solar Charge Controller Settings 101: All You Need to Know

To get the best out of your AGM battery, it's essential to adjust your solar charge controller settings following the manufacturer's recommendations. The controller settings will ...

Contact Us

For catalog requests, pricing, or partnerships, please visit:
<https://conrad.edu.pl>