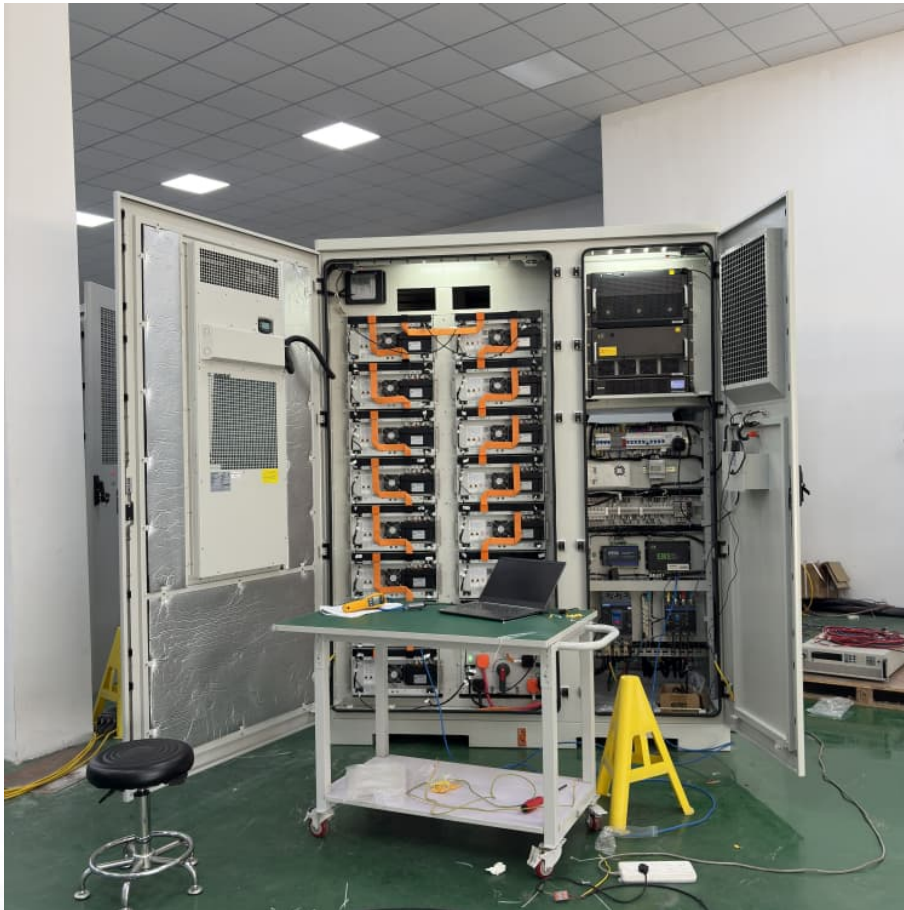


# **Solar pro-logix battery maintainer**





## Overview

---

SOLAR Pro-Logix automatic battery maintainers control many variables through each phase of the charging process to ensure an optimal charge every time. Operation is fully automatic, freeing the operator for other tasks and delivering the same consistent, beneficial charge every time.

SOLAR Pro-Logix automatic battery maintainers control many variables through each phase of the charging process to ensure an optimal charge every time. Operation is fully automatic, freeing the operator for other tasks and delivering the same consistent, beneficial charge every time.

We design Pro-Logix battery chargers to deliver reliable, versatile, and safe charging solutions for a wide range of lead-acid battery types, ensuring optimal performance for both professionals and everyday users. Our Pro-Logix battery chargers are trusted for their intelligent, versatile, and.

12V Flashing Power Supply Battery Chargers provide stable power for vehicle re-flashing applications, with up to 100 amps available on demand. Using a switching power supply and advanced circuitry, the units keep voltage ripple to a minimum to deliver clean power that will not disrupt the.

Combining fully automatic operation and the ability to properly charge multiple battery types, the PRO-LOGIX PL2310 is the perfect charger to meet the needs of today's and tomorrow's professional technician. Intelligent, beneficial, safe and versatile – one charger does it all, from fast charging.

SOLAR Pro-Logix automatic battery maintainers control many variables through each phase of the charging process to ensure an optimal charge every time. Operation is fully automatic, freeing the operator for other tasks and delivering the same consistent, beneficial charge every time. In addition.

Combining fully automatic operation and the ability to properly charge multiple battery types, the PRO-LOGIX PL2140 is the perfect battery maintainer to manage all of the batteries in your life. Intelligent, beneficial, safe and versatile – one charger does it all, from periodic charging and.



Combining fully automatic operation and the ability to properly charge multiple battery types, the PRO-LOGIX PL2140 is the perfect battery maintainer to manage all of the batteries in your life. Intelligent, beneficial, safe and versatile ?

one charger does it all, from periodic charging and. What is a pro-Logix pl2112 battery maintainer?

Combining fully automatic operation and the ability to properly charge multiple battery types, the PRO-LOGIX PL2112 is the perfect battery maintainer to manage all of the batteries in your life. Intelligent, beneficial, safe and versatile - one charger does it all, from periodic charging to battery maintenance and long term storage charging.

How does the pro-Logix pl4020 12V battery maintainer work?

The Pro-Logix PL4020 12V Battery Maintainer offers four independent 2-amp channels, advanced multi-phase charging, and enhanced maintenance mode, making it an ideal solution for efficiently charging and maintaining multiple batteries in professional and consumer settings.

What types of batteries are compatible with pro-Logix Chargers?

Compatible with a variety of battery types including Conventional, AGM, Gel Cell, Spiral Wound, Deep Cycle and Marine batteries. PRO-LOGIX chargers will deliver the correct type of charge required for each battery chemistry. Soft Start Mode is activated when the charger is connected to a deeply discharged battery.

How does a pro-Logix battery charger work?

PRO-LOGIX Battery Chargers utilize an advanced multi-phase charging process to deliver an optimal charge to each battery serviced, regardless of battery size or type. No guesswork or mystery. if it is a lead-acid battery installed in a vehicle, it can be charged and charged right with PRO-LOGIX. CHARGING & MAINTAINING THE INTELLIGENT WAY.

Who is pro-Logix?

Pro-Logix is a trusted leader in intelligent battery charging solutions, blending innovation, quality, and customer-focused design to support a wide range of industries and applications. Discover how Pro-Logix chargers have transformed workflows and improved reliability for professionals across



diverse industries.

What makes pro-Logix unique?

At Pro-Logix, we are driven by our core principles, ensuring that we deliver value, innovation, and quality to our customers and partners. Pro-Logix is a trusted leader in intelligent battery charging solutions, blending innovation, quality, and customer-focused design to support a wide range of industries and applications.



## Solar pro-logix battery maintainer

---

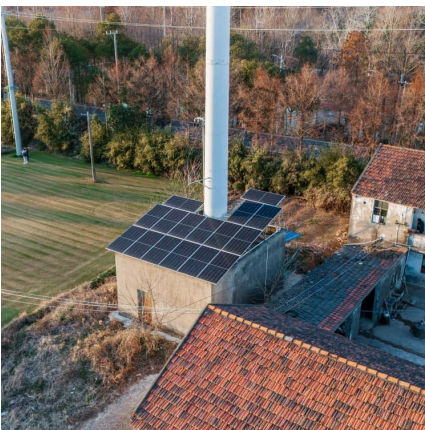
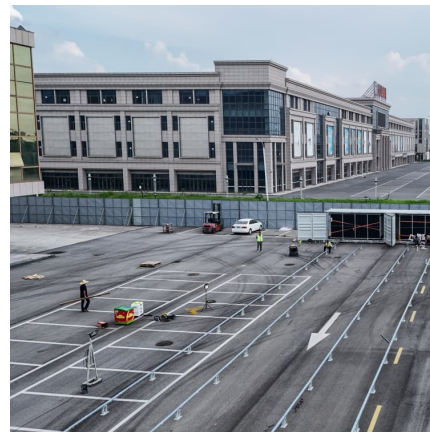


### **Solar PL2112 1.0 Amp 12V Intelligent Battery Charger / Maintainer**

Combining fully automatic operation and the ability to properly charge multiple battery types, the PRO-LOGIX PL2112 is the perfect battery maintainer to manage all of the batteries in your life.

### [Pro-Logix Battery Charger Official Website](#)

The Pro-Logix PL4020 12V Battery Maintainer offers four independent 2-amp channels, advanced multi-phase charging, and enhanced maintenance mode, making it an ideal solution for efficiently charging and maintaining multiple ...



### **Clore Automotive PL2140, 4-Amp Fully-Automatic Smart Charger, ...**

Deliver an Optimal Charge - Automatic operation featuring multi-phase PRO-LOGIX charging process Charge Dead Batteries - Use Force Start mode for severely depleted ...

### **Solar PL4050 12 Volt 4 Bank 5 Amp PRO-LOGIX Battery Charger Maintainer**

It features four independent output channels designed to properly charge a flooded or AGM (including Sprial Wound) battery. Because each



output is independent of the others, a ...



### [6/12V 4.0A SOLAR PRO-LOGIX Battery Maintainer](#)

Intelligent, beneficial, safe and versatile - one charger does it all, from periodic charging and battery repair to battery maintenance and long term storage charging. Provides the ability to properly charge virtually any lead acid battery ...



### [Pro-Logix Battery Charger Official Website](#)

The Pro-Logix PL4020 12V Battery Maintainer offers four independent 2-amp channels, advanced multi-phase charging, and enhanced maintenance mode, making it an ideal solution for ...



### [1.0 Amp 12V Intelligent Battery Charger / Maintainer](#)

Combining fully automatic operation and the ability to properly charge multiple battery types, the PRO-LOGIX PL2112 is the perfect battery maintainer to manage all of the batteries in your life.





### **Amazon : Clore Automotive PL2310 10-Amp Fully-Automatic ...**

Combining fully automatic operation and the ability to properly charge multiple battery types, the PRO-LOGIX PL2310 is the perfect charger to meet the needs of today's and ...



### **SOLAR Portable Battery Chargers**

PRO-LOGIX Battery Chargers utilize an advanced multi-phase charging process to deliver an optimal charge to each battery serviced, regardless of battery size or type.

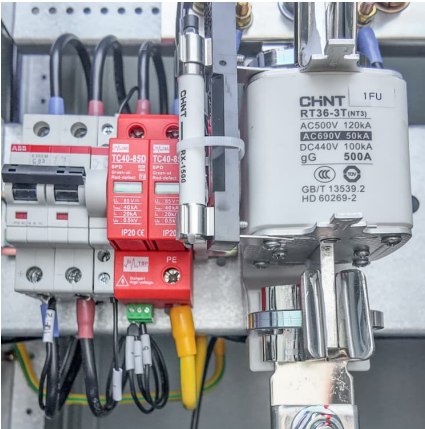
### [Solar PL4050 12 Volt 4 Bank 5 Amp PRO-LOGIX ...](#)

It features four independent output channels designed to properly charge a flooded or AGM (including Sprial Wound) battery. Because each output is independent of the others, a troublesome battery on one channel does not ...



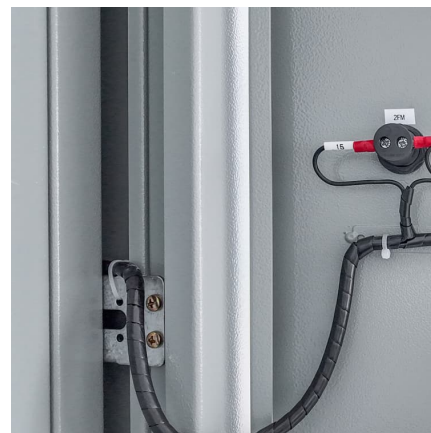
### **Solar PL2112 1.0 Amp 12V Intelligent Battery Charger ...**

Combining fully automatic operation and the ability to properly charge multiple battery types, the PRO-LOGIX PL2112 is the perfect battery maintainer to manage all of the batteries in your life.



### 6/12V 4.0A SOLAR PRO-LOGIX Battery Maintainer

Combining fully automatic operation and the ability to properly charge multiple battery types, the PRO-LOGIX PL2140 is the perfect battery maintainer to manage all of the batteries in your life.



### 6/12V 4.0A SOLAR PRO-LOGIX Battery Maintainer

Intelligent, beneficial, safe and versatile - one charger does it all, from periodic charging and battery repair to battery maintenance and long term storage charging. Provides the ability to ...



### **Clore Automotive PL2140, 4-Amp Fully-Automatic Smart Charger, ...**

Deliver an Optimal Charge - Automatic operation featuring multi-phase PRO-LOGIX charging process Charge Dead Batteries - Use Force Start mode for severely depleted batteries. This allows for charging dead batteries down to zero volts.





### **Toolsource**

SOLAR Pro-Logix automatic battery maintainers control many variables through each phase of the charging process to ensure an optimal charge every time. Operation is fully automatic, ...

## **Contact Us**

---

For catalog requests, pricing, or partnerships, please visit:  
<https://conrad.edu.pl>