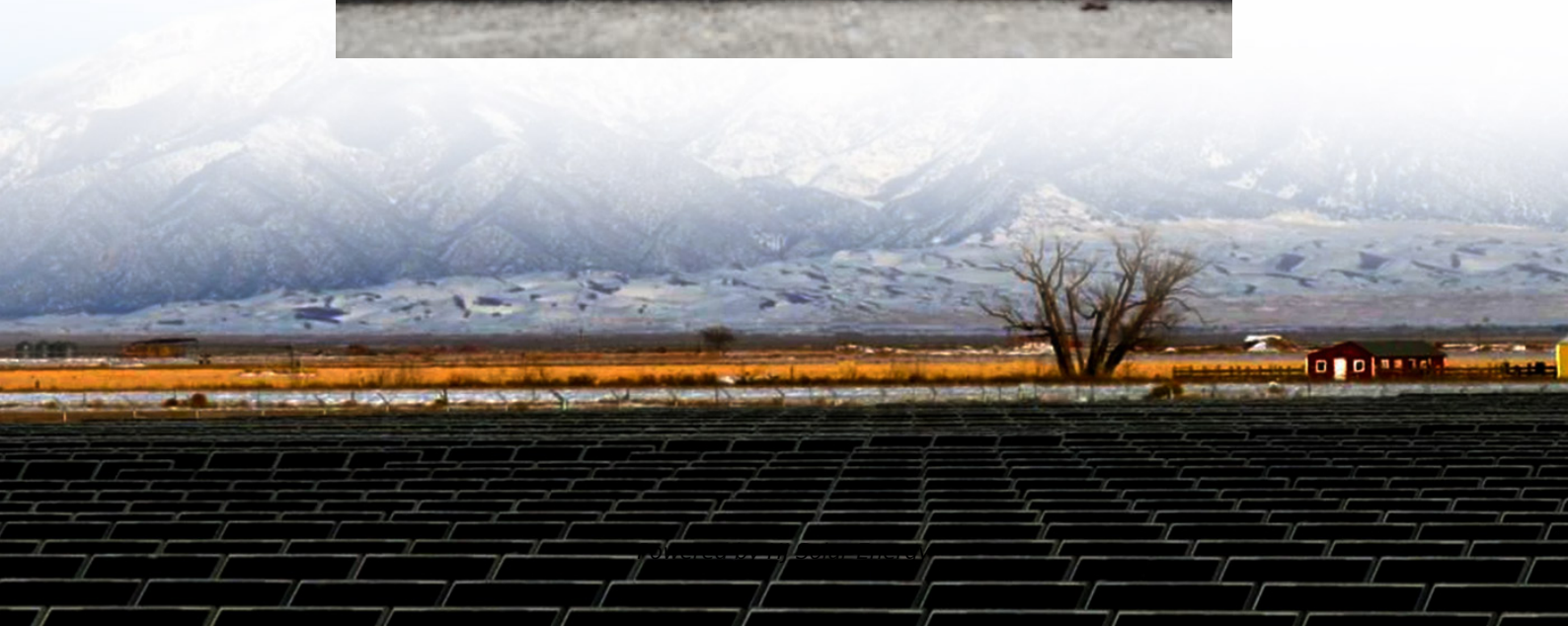


Solar panel regulator for lithium battery





Overview

Solar controllers play a crucial role in optimizing the performance of lithium batteries in solar energy systems. They regulate the flow of energy between the solar panels and batteries, ensuring efficient charging and prolonging battery life.

Solar controllers play a crucial role in optimizing the performance of lithium batteries in solar energy systems. They regulate the flow of energy between the solar panels and batteries, ensuring efficient charging and prolonging battery life.

The right controller ensures your lithium batteries charge properly and last longer, saving you time and money in the long run. In this article, you'll discover the key factors to consider when selecting a solar controller tailored for lithium batteries, helping you make an informed decision that.

A solar charge controller (also known as a solar regulator) is one of the key components of a solar installation. It is located between the solar panel and the battery storage system, mainly obtaining energy from the solar panel and converting it to the optimal voltage, ensuring that the current.

12V Universal Solar Charge Controller- Renogy Solar controller optimizes charging for [AGM batteries](#), [gel batteries](#), [flooded lead-acid batteries](#), & [lithium batteries](#). Renogy solar controller technology auto-selects the perfect charging curve ([AGM/gel/flooded lead-acid/lithium](#)).

If you're upgrading to lithium batteries for your solar setup, you might wonder: can your existing solar charge controller handle the job?

The short answer is no—lithium batteries demand specialized regulation to avoid damage and maximize efficiency. While traditional lead-acid controllers are.

In the realm of solar energy systems, MPPT solar regulators serve as the bridge between solar panels and lithium batteries. Understanding their role and making informed choices is crucial for maximizing system efficiency and



prolonging battery life. Enter “The Ultimate Guide to MPPT Solar.

In this article you'll learn the basics of solar charge controllers, when to use them and how to choose the best solar battery charger for your system. Solar charge controllers control the flow of electrical energy to the battery, ensuring that the battery is charged in an appropriate manner to.



Solar panel regulator for lithium battery



How to resolve the issue "QnA Maker runtime error Authorization ...

I am using Azure QA Maker and I can successfully my QA pairs. However, when I loaded the QA pairs and tried to test the service by clicking "Test" on the upper right corner, I ...

What Solar Controller Do I Need for Lithium Batteries ...

This comprehensive guide helps you select the right solar controller to maximize efficiency and battery lifespan. Discover the advantages of lithium batteries, learn about PWM and MPPT controllers, and find key ...



The Ultimate Guide to MPPT Solar Regulators for Lithium ...

By providing comprehensive information on the technology, compatibility, charging profiles, safety features, and installation procedures, the guide empowers readers to make informed decisions ...

[DevExtreme Angular Documentation Search](#)

The begin Update () and endUpdate () methods reduce the number of renders in cases where extra rendering can negatively affect performance. See Also jQuery Call Methods



[Quickstart: Use SDK to create and manage knowledge base](#)

Follow these steps to install the package and try out the example code for basic tasks. The QnA Maker service is being retired on the October 31, 2025 (extended from March ...



[Leverage QnA Maker Search within a Client Application](#)

In this post, App Dev Manager Patrick King explains how to integrate a QnA Maker knowledgebase into a client application. QnA Maker is an Azure Cognitive Service that ...



What Solar Charge Controller Do I Need for Lithium Batteries?

The most suitable solar charge controller for Li-ion battery is MPPT type solar charge controller, MPPT type solar charge controller is a modification of PWM type, which is ...





[What Solar Charge Controller Do I Need for Lithium...](#)

The most suitable solar charge controller for Lithium batteries is the MPPT solar charge controller. The MPPT solar charge controller is an improved version of the PWM type, which is ideal for complex solar control ...



[Mastering Solar Charge Controllers for Lithium ...](#)

Discover the essential factors to consider when choosing a solar charge controller for lithium batteries. Ensure optimal performance and longevity for your solar energy system with this comprehensive guide by Rocksolar.

QnA Maker Runtime Error

In the Azure portal search for your QnAMaker resource name and this should also list its app service and search service. Click on the app service and hit the restart button ...



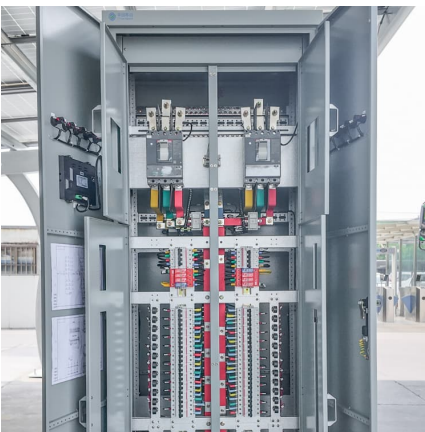
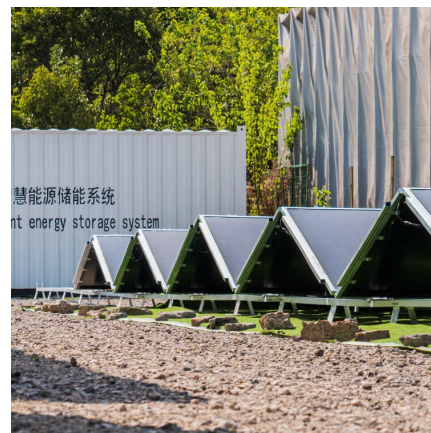
Best Solar Charge Controllers for Lithium Batteries , Top Picks

6 ???· Whether you're upgrading an existing system or building a new off-grid solar setup, choosing the right solar charge controller designed specifically for lithium batteries is a smart ...



BougeRV Li 20A PWM Solar Charge Controller 12V 24V, Solar Panel

With setting to Li battery type, this solar charge controller also has a function to jumpstart your lithium battery in case it gets overly discharged. Don't need to buy a new controller for the ...



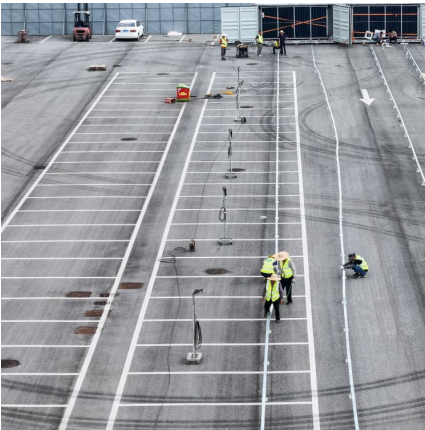
Search Results: for qna runtime test begin qna runtime test query ...

To consider the filter expression syntax, begin by creating a sample DataSource. NOTE Filtering works when inputting a plain data structure only. However, if you need the filtering capability , ...

What Solar Controller Do I Need for Lithium Batteries to Maximize

This comprehensive guide helps you select the right solar controller to maximize efficiency and battery lifespan. Discover the advantages of lithium batteries, learn about PWM ...





Required properties are missing from object: qnaRuntimeEndpoint

Fill in the form (do not click create button) on Azure portal when create a new QnA Maker and click Automation options. Then you will get the template and parameters.

[LiTime Solar Charge Controllers for Sale -MPPT & PWM](#)

Efficient solar charge controllers for optimal solar energy battery storage. Enhance your solar power system with LiTime advanced technology.



What Solar Charge Controller Do I Need for Lithium Batteries?

The most suitable solar charge controller for Li-ion batteries is the MPPT solar charge controller. The MPPT solar charge controller is an improved version of the PWM type, ...



The Ultimate Guide to MPPT Solar Regulators for Lithium Batteries ...

By providing comprehensive information on the technology, compatibility, charging profiles, safety features, and installation procedures, the guide empowers readers to make informed decisions ...



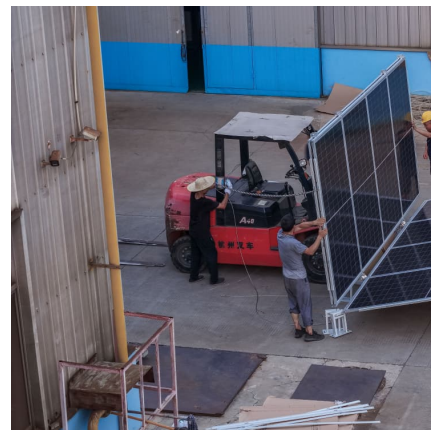
Do You Need a Special Solar Regulator for Lithium Batteries

MPPT controllers are strongly recommended for lithium batteries because they can extract 20-30% more power from your solar panels. While PWM controllers are cheaper, ...



Mastering Solar Charge Controllers for Lithium Batteries: Your

Discover the essential factors to consider when choosing a solar charge controller for lithium batteries. Ensure optimal performance and longevity for your solar energy ...



Renogy Wanderer Li 30A 12V PWM Negative Ground Solar ...

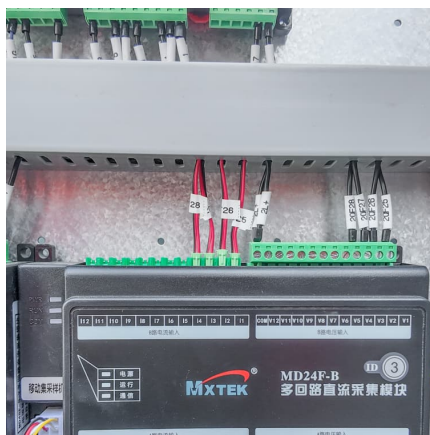
Monitor solar input, battery SOC, and fault alerts via the DC Home App - transforming your Renogy solar charge controller into a smart solar power controller for off-grid systems.





Renogy Wanderer Li 30A 12V PWM Negative Ground Solar Charge Controller

Monitor solar input, battery SOC, and fault alerts via the DC Home App - transforming your Renogy solar charge controller into a smart solar power controller for off-grid systems.

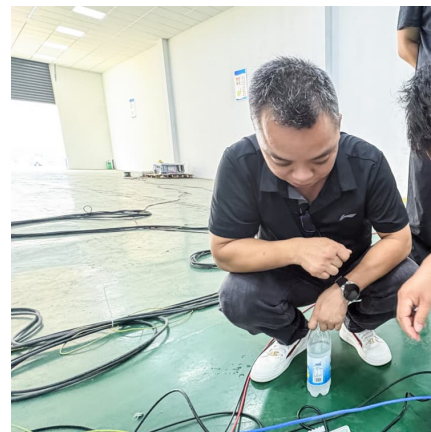


[BougeRV Li 20A PWM Solar Charge Controller 12V ...](#)

With setting to Li battery type, this solar charge controller also has a function to jumpstart your lithium battery in case it gets overly discharged. Don't need to buy a new controller for the upgraded Lithium-ion batteries.

Structured way to test query when not supported in "qna"

The WebUI Query option will not solve the issue of testing relevance that the client CAN run but QnA cannot run, because WebUI Query uses QnA to get the results, so it ...



QnA CORS runtime issue

The question is if you were able to test before. This might not be the case for you but if you have a few KBs for one resource and you keep them open in separate tabs, you ...



[What Solar Charge Controller Do I Need for Lithium...](#)

The most suitable solar charge controller for Li-ion battery is MPPT type solar charge controller, MPPT type solar charge controller is a modification of PWM type, which is very suitable for complex solar control ...



Contact Us

For catalog requests, pricing, or partnerships, please visit:
<https://conrad.edu.pl>