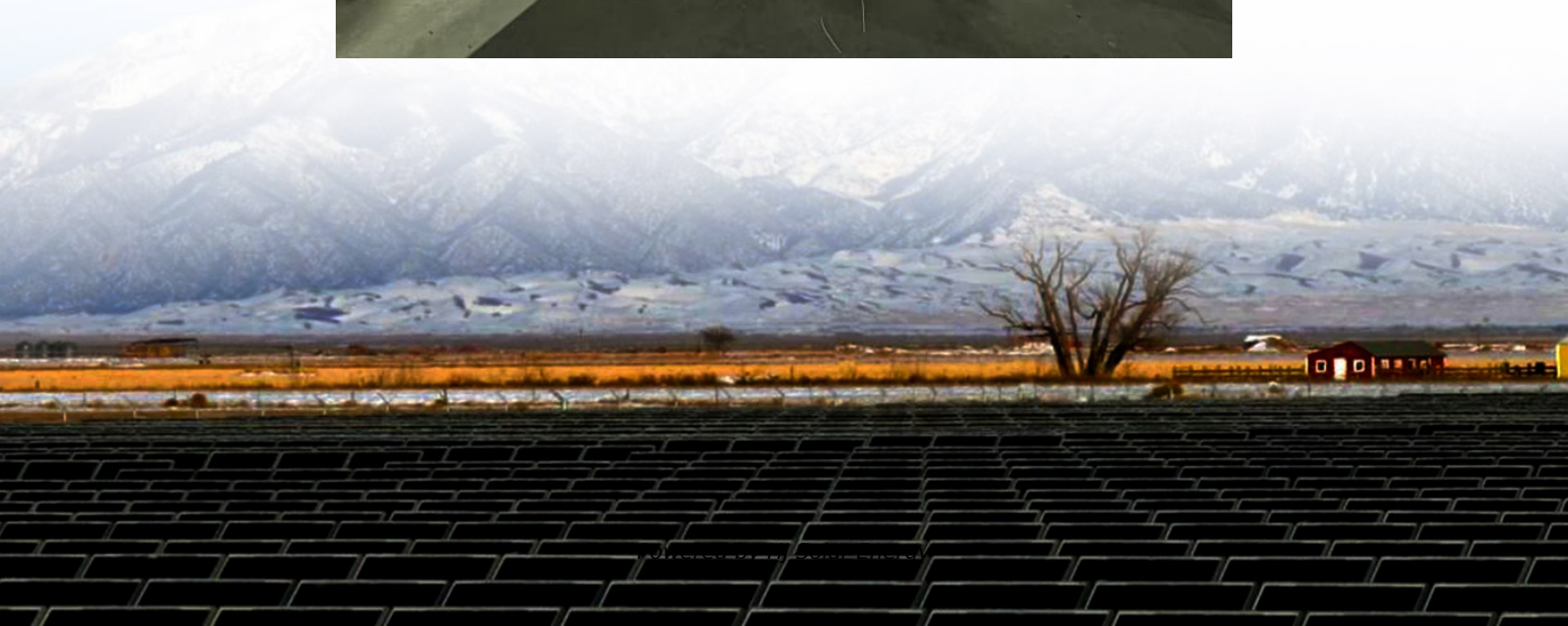


Solar panel produces kwh per day





Overview

Typically, a standard residential solar panel produces between 250 to 400 watts under ideal conditions. This translates to approximately 1 to 2 kilowatt-hours (kWh) of electricity per day, depending on factors like location and weather.

Typically, a standard residential solar panel produces between 250 to 400 watts under ideal conditions. This translates to approximately 1 to 2 kilowatt-hours (kWh) of electricity per day, depending on factors like location and weather.

For 1 kWh per day, you would need about a 300-watt solar panel. For 10kW per day, you would need about a 3kW solar system. If we know both the solar panel size and peak sun hours at our location, we can calculate how many kilowatts does a solar panel produce per day using this equation: Daily kWh.

Two variables dictate how much energy your solar panels produce: 1. Solar Panel Wattage: Higher-wattage panels generate more kWh. Common sizes include 100W (small setups), 300-400W (residential), and 500W+ (commercial systems). Example: A 500W panel produces 50% more energy than a 250W panel under.

As a general rule, with an average irradiance of 4 peak-sun-hours/day, 1 watt of solar panel rated power will produce on average 4 watt-hours (Wh) of energy. This amount equates to 0.004kWh, so a 300 watt solar panel will generate 1.22kWh/day. The precise amount depends on the location irradiance.

On average, a solar panel can output about 400 watts of power under direct sunlight, and produce about 2 kilowatt-hours (kWh) of energy per day. Most homes install around 18 solar panels, producing an average of 36 kWh of solar energy daily. That's enough to cover most, if not all, of a typical.

To calculate the daily kWh output of a solar panel, use the following formula: Consider a 400W solar panel in a location receiving 5 peak sunlight hours daily with a system efficiency of 85%: This panel produces approximately 1.7 kWh



of electricity per day under these conditions. The energy.

The amount of electricity a solar panel system produces is measured in kilowatts (kW), which represents the rate of power generation. Energy consumption, on the other hand, is measured in kilowatt-hours (kWh), indicating how much electricity is used over time. Excess solar energy can be stored in a. How much energy does a solar panel generate?

The amount of energy generated by any solar panel depends heavily on the irradiance for the panel's location measured in kilowatt-hours per square meter per day (kWh/m²/day). For convenience, it's also known as the location's Peak-Sun-Hours and can be used as a quick estimated of a solar panel arrays output per day or year measured in kWh.

How do I calculate the daily kWh output of a solar panel?

To calculate the daily kWh output of a solar panel, use the following formula: Consider a 400W solar panel in a location receiving 5 peak sunlight hours daily with a system efficiency of 85%: This panel produces approximately 1.7 kWh of electricity per day under these conditions.

How much energy does a 300 watt solar panel produce?

A 300-watt solar panel will produce anywhere from 0.90 to 1.35 kWh per day (at 4-6 peak sun hours locations). A 400-watt solar panel will produce anywhere from 1.20 to 1.80 kWh per day (at 4-6 peak sun hours locations). The biggest 700-watt solar panel will produce anywhere from 2.10 to 3.15 kWh per day (at 4-6 peak sun hours locations).

How much energy does a 400W solar panel produce a day?

Consider a 400W solar panel in a location receiving 5 peak sunlight hours daily with a system efficiency of 85%: This panel produces approximately 1.7 kWh of electricity per day under these conditions. The energy production of a solar panel varies significantly by location due to differences in peak sunlight hours.

How many solar panels per day?

Find your local peak sun hours (consult a solar map or use an estimate). For example, if you use 30 kWh per day, have 4.5 sun hours and plan to install 400 W panels: $400 \text{ W} \times 4.5 = 1,800 \text{ Wh}$ (1.8 kWh) per panel per day. $30 \text{ kWh} \div 1.8 \text{ kWh} \approx 17$ panels.



How many kWh does a 100 watt solar panel produce?

The calculator will do the calculation for you; just slide the 1st wattage slider to '100' and the 2nd sun irradiance slider to '5.79', and you get the result: A 100-watt solar panel installed in a sunny location (5.79 peak sun hours per day) will produce 0.43 kWh per day.



Solar panel produces kwh per day



[How Much Energy Does A Solar Panel Produce?](#)

Estimate the Number of Solar Panels - A 300W solar panel produces about 1.2 kWh per day. To determine the number of panels required, divide your daily energy need by the per-panel production.

[How Many kWh Does a Solar Panel Produce Daily?](#)

Understanding how much energy a solar panel produces per day is essential for anyone considering solar installation. This article provides a detailed analysis of solar panel energy production and offers tools to help ...



[How Much Energy Does A Solar Panel Produce? - Renogy US](#)

A 1 kW solar system typically generates 4-5 kWh per day, or 1,400-1,600 kWh annually. Output varies by season, with peak production in summer and lower generation during winter or ...

[How Many kWh Does A Solar Panel Produce Per Day?](#)

The amount of energy generated by any solar panel depends heavily on the irradiance for the panel's location measured in kilowatt-hours per



square meter per day (kWh/m²/day). For convenience, it's also known as the ...



Daily Solar Production Calculator

Understanding how much solar energy your system produces daily is essential for efficient energy planning, cost savings, and reducing reliance on traditional power sources. ...



[How Many kWh Does A Solar Panel Produce Per Day?](#)

To illustrate how many kWh different solar panel sizes produce per day, we have calculated the kWh output for locations that get 4, 5, or 6 peak sun hours. Here are all the results, gathered in ...



Solar Panels kWh Calculator , Calculate Energy Production

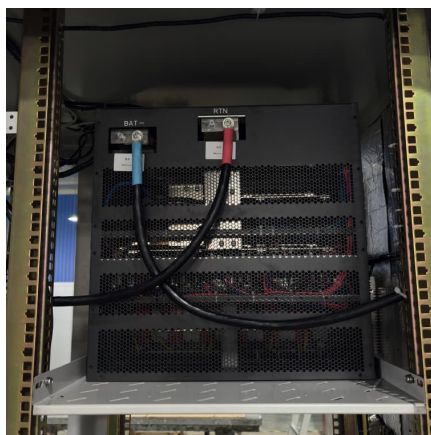
How many kWh does 1 solar panel produce per day? A typical 350W panel produces 1.2-1.8 kWh/day in good conditions, or 400-600 kWh annually depending on location.





[How Many kWh Does A Solar Panel Produce Per Day?](#)

The amount of energy generated by any solar panel depends heavily on the irradiance for the panel's location measured in kilowatt-hours per square meter per day ...



[How Many kWh Does a Solar Panel Produce Per Day?](#)

Calculate how many kWh a solar panel produces daily with our easy formula + chart. Learn how panel size and peak sun hours impact energy output in your state.

[How Much Energy Does A Solar Panel Produce?](#)

A 400-watt panel can generate roughly 1.6-2.5 kWh of energy per day, depending on local sunlight. To cover the average U.S. household's 900 kWh/month ...



What Is the Energy Output of a Solar Panel? A Complete Guide

Estimate the Number of Solar Panels - A 300W solar panel produces about 1.2 kWh per day. To determine the number of panels required, divide your daily energy need by ...



How Many kWh Does a Solar Panel Produce Daily?

Understanding how much energy a solar panel produces per day is essential for anyone considering solar installation. This article provides a detailed analysis of solar panel ...



How Much Energy Does A Solar Panel Produce?

A 400-watt panel can generate roughly 1.6-2.5 kWh of energy per day, depending on local sunlight. To cover the average U.S. household's 900 kWh/month consumption, you typically need 12-18 panels. Output depends on ...

How Much Energy Does A Solar Panel Produce?

On average, a solar panel can output about 400 watts of power under direct sunlight, and produce about 2 kilowatt-hours (kWh) of energy per day. Most homes install around 18 solar panels, ...





Contact Us

For catalog requests, pricing, or partnerships, please visit:
<https://conrad.edu.pl>