

# Solar edge battery capacity





## Overview

---

The SolarEdge Home Battery has a fairly standard usable capacity of 9.7 kWh. You can stack up to three battery units for a total of 29.1 kWh of energy storage capacity. SolarEdge's battery isn't modular, meaning you won't be able to upgrade your storage capacity on a singular battery.

The SolarEdge Home Battery has a fairly standard usable capacity of 9.7 kWh. You can stack up to three battery units for a total of 29.1 kWh of energy storage capacity. SolarEdge's battery isn't modular, meaning you won't be able to upgrade your storage capacity on a singular battery.

when rates are high or at night. When installed with backup power during outages. Integrates with our single phase inverters. Integrates with our three phase inverters. Enables full or partial home backup when the grid is down. Need help?

Elevate Your Home's Energy Independence with SolarEdge Home.

The Energy Bank is a 9.7 kilowatt-hour battery that can power basic electrical loads for 45 hours. It costs about \$12,000 to install. The battery comes with a fantastic warranty, and because SolarEdge is a well-established company in the solar inverter space, you can trust that it will be around to.

The SolarEdge Home Battery is more than just storage — it's the heart of a fully integrated smart energy system. Designed to work seamlessly with SolarEdge inverters, the Backup Interface, EV chargers, and other smart energy devices, it gives homeowners greater control, efficiency, and energy.

The SolarEdge Home Battery is a decent-sized 9.7 kilowatt-hour battery that comes with good performance and efficiency specs, as well as an unlimited cycle warranty. It also packs some intricate battery management features, designed to assist you in your battle against time of use rates. We'll talk.

The SolarEdge Home Battery has a usable capacity of 9.7kWh and can crank 5k of continuous power. It has a depth of discharge of 100% and a roundtrip efficiency of 94.5%. The roundtrip efficiency of the SolarEdge Home Battery



stands at 94.5 percent. This metric measures the electrical losses.

Some important features of the SolarEdge Home Battery are: It has 9.7 kilowatt-hours of usable storage. It can provide 5 kilowatts of continuous power. It's DC coupled. It 93.3% round trip efficiency, which is good. Backup costs extra. Single-phase homes can charge the battery from solar panels. How many kilowatts does a SolarEdge home battery use?

Like most home battery systems with around 10 or more kilowatt-hours of storage, the SolarEdge Home Battery can provide a continuous 5 kilowatts of power. While this is enough to meet usual household needs, it's not difficult to draw more than 5 kilowatts depending on what appliances are used.

What are the features of SolarEdge home battery?

Some important features of the SolarEdge Home Battery are: It has 9.7 kilowatt-hours of usable storage. It can provide 5 kilowatts of continuous power. It's DC coupled. It 93.3% round trip efficiency, which is good. Backup costs extra. Single-phase homes can charge the battery from solar panels during a blackout with the backup option.

How much power does a SolarEdge energy bank battery have?

See full SolarEdge Energy Bank spec sheet here The SolarEdge Energy Bank battery totes a maximum power rating of 5 kW and 10 kWh usable capacity. To better understand these numbers, let's break down the meaning of a battery's maximum power rating and usable capacity.

Is a SolarEdge home battery a good choice?

The SolarEdge Home battery is a smart, efficient choice for homeowners already using — or planning to install — a SolarEdge inverter. With strong performance, scalable capacity, and the option to add backup power and generator support, it's a future-ready investment.

How much clearance does a SolarEdge home battery need?

To allow for adequate cooling, the SolarEdge Home Battery requires a minimum of 20 cm clearance all around. This includes underneath when wall mounted. In addition to this, in Australia battery installations now require 60 cm clearance to the sides and 90 cm above and not be located inside "habitable" areas of a home.



What size battery does SolarEdge offer?

SolarEdge offers their Energy Bank battery in one size: 9.7 kilowatt-hours (kWh). 9.7 kWh is just about one-third of the average American household's daily energy usage, so it's a tad on the smaller side.



## Solar edge battery capacity

---



### Expert Review Of The New SolarEdge Battery , SolarReviews

The SolarEdge Energy Bank battery is a pretty average lithium-ion solar battery that holds 9.7 kWh of electricity and can release 5 kW of power. The SolarEdge Energy Bank costs about ...

### [Solaredge Energy Bank Battery Review](#)

The SolarEdge Energy Bank battery totes a maximum power rating of 5 kW and 10 kWh usable capacity. To better understand these numbers, let's break down the meaning of a battery's maximum power rating and usable ...



### SolarEdge Home Battery Review: A Good Battery From a Big Solar ...

The SolarEdge Home Battery has a fairly standard usable capacity of 9.7 kWh. You can stack up to three battery units for a total of 29.1 kWh of energy storage capacity.



### SolarEdge Home Battery Review: 9.7kWh, DC Coupled, Optional ...

Like most home battery systems with around 10 or more kilowatt-hours of storage, the SolarEdge Home Battery can provide a continuous 5



kilowatts of power. While this is enough to meet ...

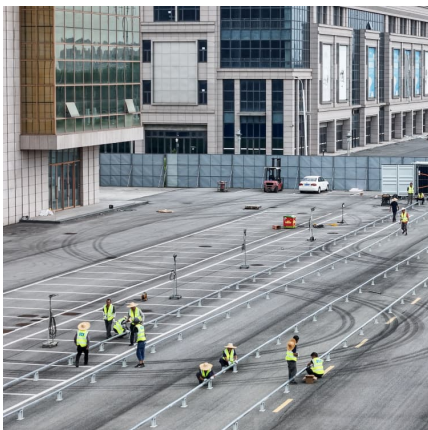
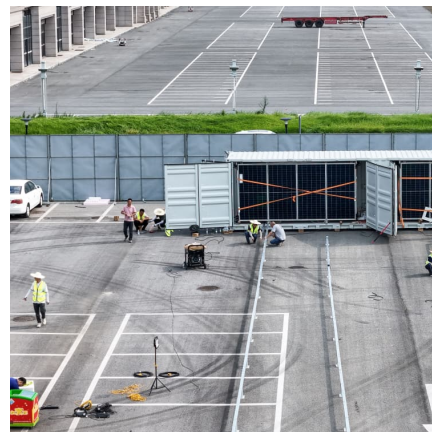


### [SolarEdge Home Battery Review: 9.7kWh, DC ...](#)

Like most home battery systems with around 10 or more kilowatt-hours of storage, the SolarEdge Home Battery can provide a continuous 5 kilowatts of power. While this is enough to meet usual household needs, it's not difficult to draw more ...

### [Introducing: SolarEdge Home Batteries . SolarEdge](#)

SolarEdge Home Storage and Backup Our highly efficient DC-coupled Batteries store excess solar energy for powering the home when rates are high or at night. When installed with our ...



### [Solaredge Energy Bank Battery Review](#)

The SolarEdge Energy Bank battery totes a maximum power rating of 5 kW and 10 kWh usable capacity. To better understand these numbers, let's break down the ...



### [SolarEdge Home Battery Review: A Good Battery](#)

The SolarEdge Home Battery has a fairly standard usable capacity of 9.7 kWh. You can stack up to three battery units for a total of 29.1 kWh of energy storage capacity.



### **Choosing the Right Battery Size For Your Solar System , SolarEdge**

Ensure optimal performance of your system by choosing the right battery size. Learn the factors, calculations, and best practices for battery sizing.

### [A Complete Review of SolarEdge Home Battery](#)

The SolarEdge Home Battery has a usable capacity of 9.7kWh and can crank 5k of continuous power. It has a depth of discharge of 100% and a roundtrip efficiency of 94.5%.



### **SolarEdge Home Battery 400V**

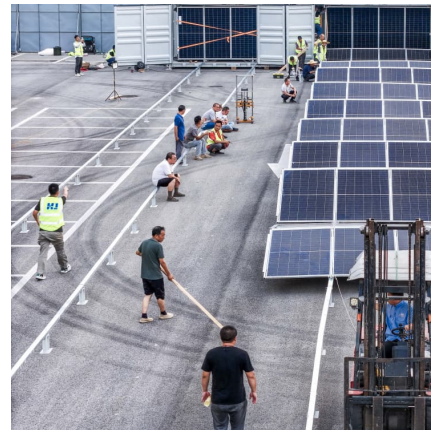
SolarEdge Home inverters allow a DC oversizing rate of up to 200% and a SolarEdge Home Battery provides an ideal storage option for housing all that excess power in both on-grid and

...



### SolarEdge Energy Bank 10kWh Battery

SolarEdge Energy Bank 10kWh Battery For North America The SolarEdge Energy Bank is designed for use with SolarEdge Energy Net for wireless communication. The inverter might ...



### SolarEdge Battery Review (2025) - Specs, Backup & Installation ...

Review the SolarEdge Home Battery: storage capacity, efficiency, backup power, and compatibility. Is it right for your home?

### SolarEdge Home Battery 400V

SolarEdge Home inverters allow a DC oversizing rate of up to 200% and a SolarEdge Home Battery provides an ideal storage option for housing all that excess power in both on-grid and backup\* applications.





## Contact Us

---

For catalog requests, pricing, or partnerships, please visit:  
<https://conrad.edu.pl>