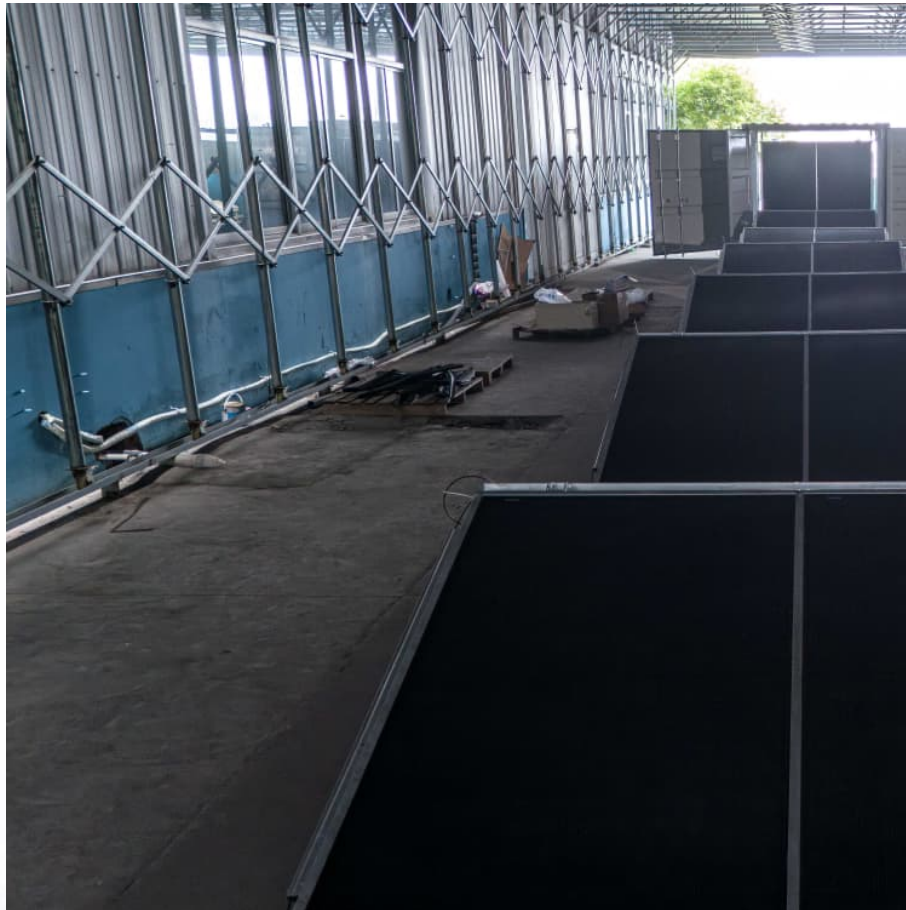


# **Samsung solar remote battery life**





## Overview

---

Depending on how often you use it, a full battery charge on the Samsung SolarCell Remote can last up to two years. I've had mine for about 6 months now and have used about 15% of the battery. But as we mentioned above, charging your remote is easy and doesn't take much time at all.

Depending on how often you use it, a full battery charge on the Samsung SolarCell Remote can last up to two years. I've had mine for about 6 months now and have used about 15% of the battery. But as we mentioned above, charging your remote is easy and doesn't take much time at all.

The Samsung SolarCell Remote was largely created as an eco-friendly way to keep 99 million AAA batteries from damaging the environment. You can pair this solar remote control to your QLED Samsung Smart TV for enhanced, easy function. Charging and monitoring the charge of the Samsung solar remote is.

How to check the remote controller battery status?

There are many models for Samsung remote controllers, among them the ones that charge with solar cells and many more, but from time to time they need to be charged based on their battery percentage. 1 Press the Home button to check the menu. 2.

Long Battery Life: Once fully charged, the remote can operate for an extended period. The solar charging system utilizes photovoltaic cells that convert sunlight into electrical energy. This means that even on cloudy days or when indoors, as long as there's sufficient ambient light, the remote can.

This article will guide you through the simple steps to check your Samsung solar remote's battery level. You'll discover quick tips to keep your remote functioning at its best. By the end, you'll be equipped to monitor your remote's battery life with ease, so you can focus on enjoying your favorite.

The first step in checking the battery level on your Samsung solar remote is to locate the battery indicator. The battery indicator is a small icon on the remote that tells you how much battery life is left. This icon is typically located



in the top right corner of the remote, but it may vary.

By exposing the remote's solar panel to indoor and outdoor light with the panel facing upwards, you can extend its usage time. To check the battery level or adjust remote settings, you can use the Remote Control menu in your Samsung TV's settings. Note: Images, buttons, and functions of the Samsung. How long does a Samsung TV Solar remote last?

The solar remote of Samsung TV is designed with a battery that should last up to 2 years under normal usage. The battery life may vary depending on the amount and type of use, as well as environmental factors such as temperature and humidity. Note: It does not contain alkaline batteries and has no option to replace them.

How long does a solarcell remote battery last?

Depending on how often you use it, a full battery charge on the Samsung SolarCell Remote can last up to two years. I've had mine for about 6 months now and have used about 15% of the battery.

How long does it take Samsung solar remote to charge?

Let's look at some important things before jumping to troubleshooting. How Long Does It Take For Samsung's Solar Remote Control To Charge?

If you wish to use USB-C to charge your Samsung Solar Remote, it will take around 30 minutes for the battery to reach full capacity.

Does Samsung TV remote use batteries?

Don't worry, there's a USB-C charging port too. The back of Samsung's new TV remote has a solar cell that lets the battery recharge using interior light. Just about every TV remote uses batteries and they generally last a long time, but eventually you will need to replace them.

Does Samsung TV remote have a solar cell?

A solar cell on the back lets them recharge using indoor (and outdoor) light. Don't worry, there's a USB-C charging port too. The back of Samsung's new TV remote has a solar cell that lets the battery recharge using interior light.

How do I know if my solarcell remote has a battery?



The quickest way to check the battery level of your Samsung SolarCell Remote is by pressing the voice button on the remote and saying “Remote battery.” Your TV should display the percentage level of your remote’s battery on the TV screen. You can also check the battery level of your SolarCell remote in your TV’s settings:



## Samsung solar remote battery life

---

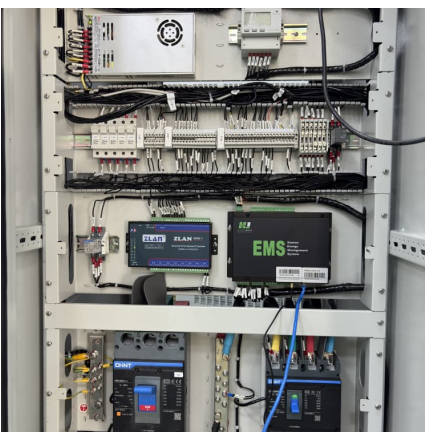


### How to Check Samsung Solar Remote Battery Level and Ensure

Discover how to easily check your Samsung solar remote's battery level and ensure a seamless viewing experience. This article provides practical steps to monitor battery ...

### Does Samsung Solar Remote Have Batteries: Understanding Its ...

Long Battery Life: A fully charged internal battery can power the remote for several weeks, minimizing interruptions during use.  
Maintenance Tips: Regularly clean the ...



### [How to check the remote controller battery status?](#)

There are many models for Samsung remote controllers, among them the ones that charge with solar cells and many more, but from time to time they need to be charged based on their battery percentage.

### How to check battery level on samsung solar remote? - ...

The first step in checking the battery level on your Samsung solar remote is to locate the battery indicator. The battery indicator is a small



icon on the remote that tells you ...



### Samsung TV SolarCell Remote Guide

By exposing the remote's solar panel to indoor and outdoor light with the panel facing upwards, you can extend its usage time. To check the battery level or adjust remote ...



### How to Check Battery Level on Your Samsung Solar Remote - A ...

Still, even solar-powered gadgets need occasional checkups. Today, we'll crack the code on how to check battery level Samsung solar remote while keeping things light and practical.



### Touchscreen not responding

Anyone else having issues with the touch screen becoming unresponsive. Sometimes certain apps or functions won't work unless restarted. Saw a temp fix by toggling ...





### Maximizing the Life of Your Samsung Solar Remote: How Long to ...

2 ???· Understanding the Samsung Solar Remote Samsung solar remotes, particularly designed to interface with Samsung TVs and smart home devices, are equipped with solar ...

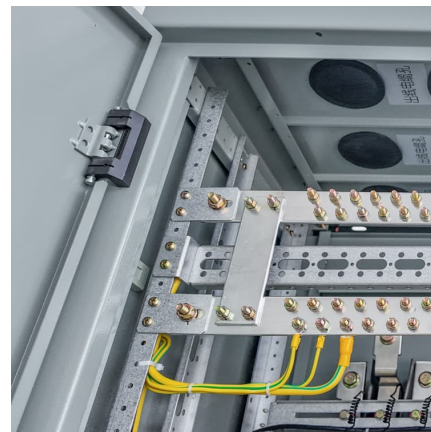


### How to Check Battery Level on Samsung Solar Remote Quickly

To learn how to check battery level on Samsung solar remote, simply observe the indicator lights or access the settings menu for updates.

### Solved: New S25 Ultra unable to create a work profile usin.

Solved: I installed company portal on my new S25 Ultra and signed using my work credentials and then I press Begin to create a Work - 3126410



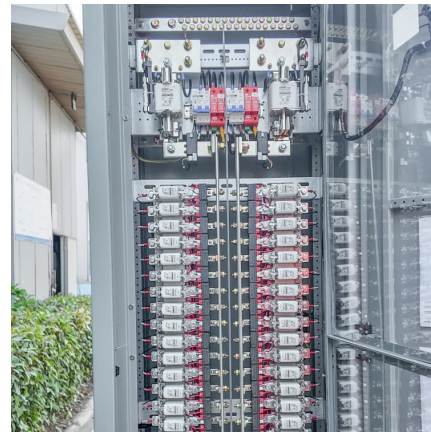
### [Keyboard covering text box in Messages](#)

I just noticed in my text messages when typing the text box only get so big then I can't see the words because they are under the keyboard. But if I close the keyboard I can see ...



### Does Samsung Solar Remote Have Batteries: Understanding Its Solar

Long Battery Life: A fully charged internal battery can power the remote for several weeks, minimizing interruptions during use.  
Maintenance Tips: Regularly clean the ...



### [Terms and Conditions \(T& Cs\) not Downloading](#)

I have three Samsung Smart TVs, one as new as 2022. All of a sudden they will not display the apps (e.g. Prime, Netflix ). Each time I try to launch an app I get the message ...

### [How To Check Battery Level On Samsung Solar Remote](#)

This video demonstrates two ways to check the battery status of a Samsung Solar remote. The first method uses Bixby voice commands, while the second involves ...





### Is Samsung financing being discontinued?

I received an email, saying that TD Bank and Samsung are ending their partnership. Did anyone else receive this email. I called to confirm this with TD Bank cs. They ...

### How to check the remote controller battery status?

There are many models for Samsung remote controllers, among them the ones that charge with solar cells and many more, but from time to time they need to be charged ...



### **Samsung Support Acknowledgement**

Samsung Care + (FKA Premium Care) concerns/Inquiries: We understand that life happens sometimes. Insurance is a great thing to have with your carrier, but you may want ...

## **Contact Us**

---

For catalog requests, pricing, or partnerships, please visit:  
<https://conrad.edu.pl>