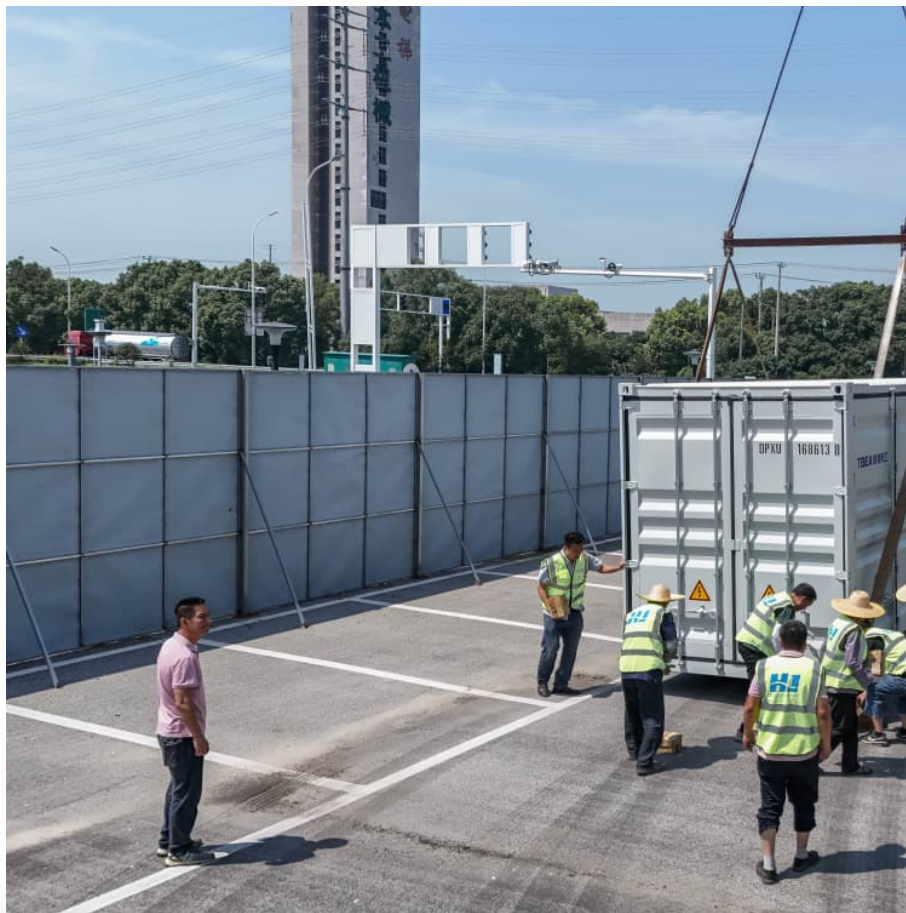


# Ryobi battery charger solid red light





## Overview

---

The single solid red light means that the charger is on but there is no battery in it. If you see this light but there is a battery in then try taking it out and putting it back in to see if the battery wasn't quite seated right.

The single solid red light means that the charger is on but there is no battery in it. If you see this light but there is a battery in then try taking it out and putting it back in to see if the battery wasn't quite seated right.

If your Ryobi battery charger shows a solid red light, it means there's a problem preventing normal charging —not just a routine status update. Many assume a red light simply signals "charging in progress," but this misconception can lead to overlooked issues like overheating, battery faults, or.

When battery pack reaches cooled temperature, charger begins fast charge mode. When battery pack reaches warmed temperature, charger begins fast charge mode. Charger pre-charges battery until normal voltage is reached, then begins fast charge mode. Battery pack or charger is defective. • If.

If you don't know the meaning of the lights on your Ryobi battery charger, keep reading! People will probably see a green blinking indicator the most on their Ryobi battery charger whenever they use it. That's because of its simple purpose, which is to tell users that the battery is charging.

A flashing red light on a Ryobi battery charger may signal that your battery is too hot, too cold, or it's indicating that your Ryobi battery has almost zero charge left in it. In any case, leaving your battery on the charger for some time should stop the flashing red light. That being said, there.

The single solid red light means that the charger is on but there is no battery in it. If you see this light but there is a battery in then try taking it out and putting it back in to see if the battery wasn't quite seated right. A solid green light on its own means that the battery is fully.

Ryobi battery chargers feature indicator lights communicating essential



information about battery status. The solid green light typically indicates the battery is fully charged, However, Ryobi battery light codes can mean different states such as blinking red light indicates a charging problem or. What do the lights on a Ryobi Charger mean?

Well, let me help you out with this handy guide to what all of the lights on a Ryobi charger mean. The single solid red light means that the charger is on but there is no battery in it. If you see this light but there is a battery in then try taking it out and putting it back in to see if the battery wasn't quite seated right.

How do I know if my Ryobi battery is charging?

When you plug in the battery charger without a battery pack, you should see a solid RED light. This simply indicates that the charger is receiving power and is ready to charge a Ryobi battery. Once you put a battery pack on the charger, you should normally see one of two things:.

Why is my Ryobi Charger flashing red and green?

If the Ryobi charger has flashing RED and GREEN lights, then there's definitely a fault that has to be dealt with. This could be happening for various reasons, such as a defective charger, a dead battery, or even something as simple as the contacts on the battery being dirty and not making good contact.

How do Ryobi battery chargers work?

Ryobi battery chargers feature indicator lights communicating essential information about battery status.

Why is my Ryobi Charger blinking?

This only occurs when you put a bad battery on the Ryobi charger. For example, if you put on a battery that doesn't hold charge any longer, the charger will blink as in the picture below. It isn't going to provide power to the attached battery, and will just blink both colors. Take the battery off as soon as you notice this pattern of lights.

Why is my Ryobi battery not charging?

If the LED status repeats a second time, try charging a different battery. • If a different battery charges normally, it's likely an issue with the battery. • If a different battery also indicates "Defective," the charger may be defective.

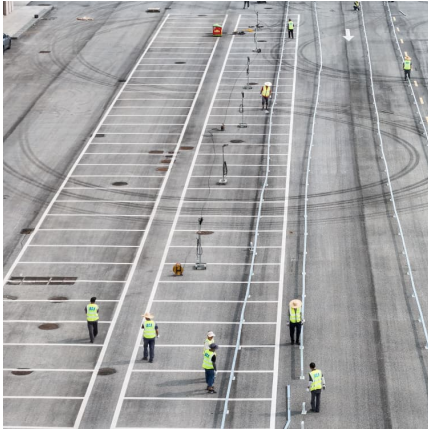


Battery ready to use. If your battery isn't charging, see: [Why isn't my RYOBI Battery charging?](#)



## Ryobi battery charger solid red light

---



### [Why is my Ryobi charger flashing red light?](#)

When the green LED light is flashing and the red LED light is steady, the battery is charging. When the red LED is off and the green LED is steady, the battery is fully charged.

### What Does a Flashing Red Light Mean on a Ryobi Battery Charger?

A flashing red light on your Ryobi battery charger is a diagnostic signal--not just a generic warning. Unlike a steady red light (which typically indicates charging in progress), a ...



### [Ryobi Battery Charger Flashing Red? 4 Reasons Why](#)

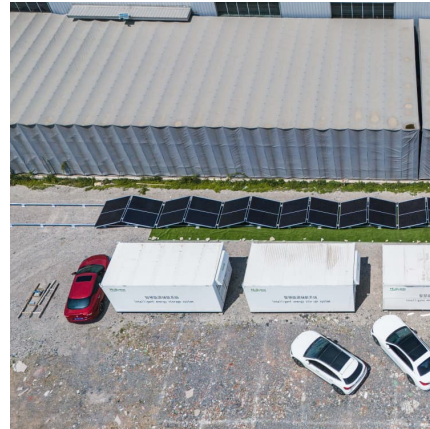
A RED light with a flashing GREEN light means the battery is charging normally. A RED light that is off and a solid GREEN light means charging is complete, but the charger ...

### [Ryobi 40V Battery Light Codes: Troubleshooting Guide](#)

For example, two green lights flashing may signal a battery in sleep mode, while a solid red light indicates charging errors. The PDF guide



outlines these patterns, helping ...



### [Ryobi Battery Charger Flashing Red? 4 Reasons Why](#)

The single solid red light means that the charger is on but there is no battery in it. If you see this light but there is a battery in then try taking it out and putting it back in to see if the battery wasn't quite seated right.



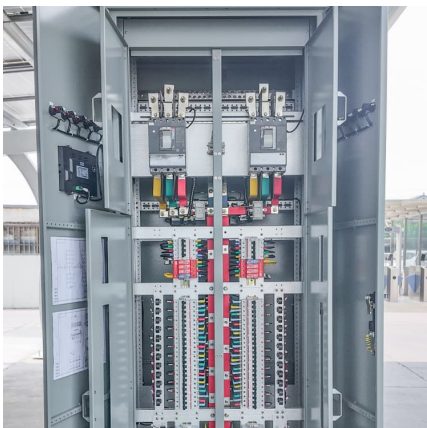
### **What do the flashing LED lights mean on RYOBI 18V Single ...**

The following LED light indicators explains that status of the battery charge or whether there's a defect for RYOBI 18V ONE+ single port chargers.



### **What Does a Solid Red Light Mean on a Ryobi Battery Charger?**

A solid red light indicates your charger has detected a fault preventing normal charging. Unlike blinking lights that show charging progress, this steady red signal means the ...





## What Does a Solid Red Light Mean on a Ryobi Battery Charger?

When your Ryobi battery charger displays a solid red light, it's communicating one of three primary issues: a charging error, battery fault, or environmental problem.



### [Ryobi Battery Charger Light Codes: Meaning & Fixes](#)

A solid green light might mean "fully charged and ready to rock," while a flashing red light could be a warning sign. We'll decode all those messages later, but for now, just know ...

### [Ryobi battery Charger Lights Meaning](#)

Red flashing lights only pop up when the charger determines that your battery is exceeding suitable temperatures. It'll alternate between dim and red like the picture underneath this.



### [What do the Lights on a Ryobi Charger Mean?](#)

The single solid red light means that the charger is on but there is no battery in it. If you see this light but there is a battery in then try taking it out and putting it back in to see if ...



### Ryobi battery Charger Lights Meaning

Red flashing lights only pop up when the charger determines that your battery is exceeding suitable temperatures. It'll alternate between dim and red like the picture underneath ...



## Contact Us

---

For catalog requests, pricing, or partnerships, please visit:  
<https://conrad.edu.pl>