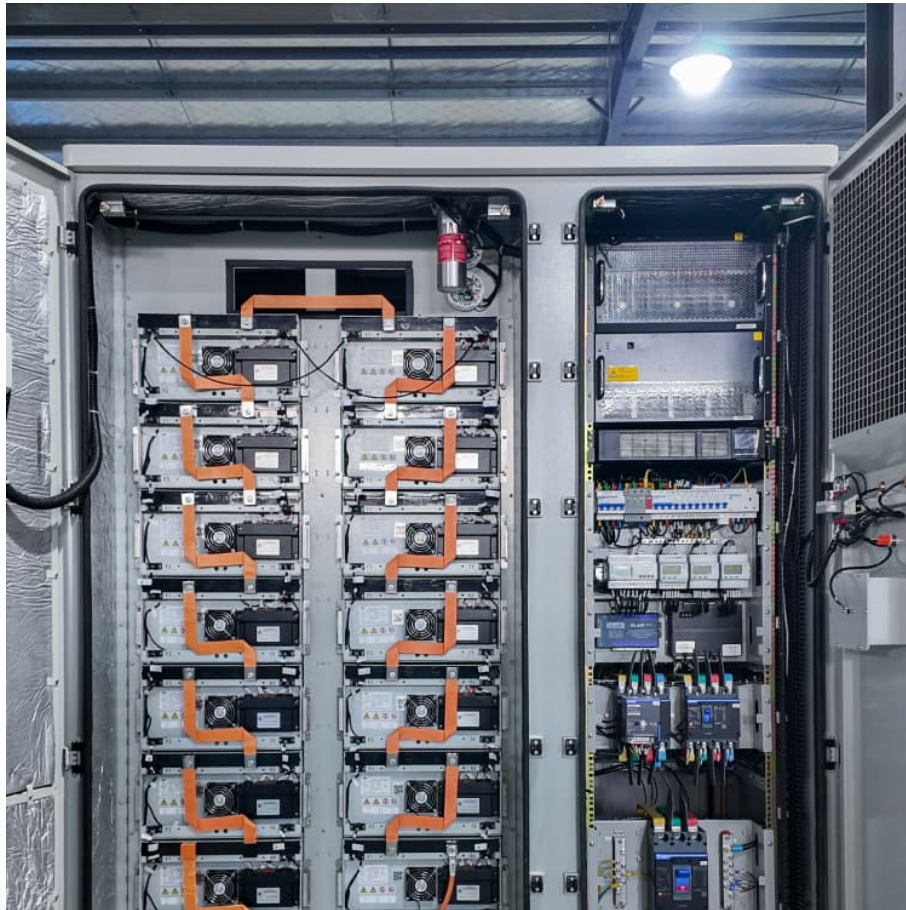


# Ryobi 18v battery charger solid red light





## Overview

---

What do the lights on a Ryobi Charger mean?

Well, let me help you out with this handy guide to what all of the lights on a Ryobi charger mean. The single solid red light means that the charger is on but there is no battery in it. If you see this light but there is a battery in then try taking it out and putting it back in to see if the battery wasn't quite seated right.

How do I know if my Ryobi battery is charging?

When you plug in the battery charger without a battery pack, you should see a solid RED light. This simply indicates that the charger is receiving power and is ready to charge a Ryobi battery. Once you put a battery pack on the charger, you should normally see one of two things:.

Why is my Ryobi Charger flashing red and green?

If the Ryobi charger has flashing RED and GREEN lights, then there's definitely a fault that has to be dealt with. This could be happening for various reasons, such as a defective charger, a dead battery, or even something as simple as the contacts on the battery being dirty and not making good contact.

How do Ryobi battery chargers work?

Ryobi battery chargers feature indicator lights communicating essential information about battery status.

Why is my Ryobi Charger blinking?

This only occurs when you put a bad battery on the Ryobi charger. For example, if you put on a battery that doesn't hold charge any longer, the charger will blink as in the picture below. It isn't going to provide power to the attached battery, and will just blink both colors. Take the battery off as soon as you notice this pattern of lights.



Why is my Ryobi battery not charging?

If the LED status repeats a second time, try charging a different battery. • If a different battery charges normally, it's likely an issue with the battery. • If a different battery also indicates "Defective," the charger may be defective. Battery ready to use. If your battery isn't charging, see: [Why isn't my RYOBI Battery charging?](#)



## Ryobi 18v battery charger solid red light

---



### [Ryobi Battery Charger Light Codes: Meaning & Fixes](#)

A solid green light might mean "fully charged and ready to rock," while a flashing red light could be a warning sign. We'll decode all those messages later, but for now, just know ...

### What Does a Solid Red Light Mean on a Ryobi Battery Charger?

A solid red light indicates your charger has detected a fault preventing normal charging. Unlike blinking lights that show charging progress, this steady red signal means the ...



### Ryobi Battery Charger

Press down on the battery pack to be sure contacts on the battery pack engage properly with contacts in the charger. NOTE: After charging is complete, the green LED will remain on until ...

### What Does a Flashing Red Light Mean on a Ryobi Battery Charger?

When your Ryobi battery charger flashes red, systematic troubleshooting can often resolve the issue without costly replacements. Follow these



detailed steps to diagnose ...



### What Does a Solid Red Light Mean on a Ryobi Battery Charger?

When your Ryobi battery charger displays a solid red light, it's communicating one of three primary issues: a charging error, battery fault, or environmental problem.



### Ryobi battery Charger Lights Meaning

Red flashing lights only pop up when the charger determines that your battery is exceeding suitable temperatures. It'll alternate between dim and red like the picture underneath this.



### What do the Lights on a Ryobi Charger Mean?

The single solid red light means that the charger is on but there is no battery in it. If you see this light but there is a battery in then try taking it out and putting it back in to see if ...





## What do the flashing LED lights mean on RYOBI 18V Single ...

The following LED light indicators explains that status of the battery charge or whether there's a defect for RYOBI 18V ONE+ single port chargers.



### [Ryobi battery Charger Lights Meaning](#)

Red flashing lights only pop up when the charger determines that your battery is exceeding suitable temperatures. It'll alternate between dim and red like the picture underneath ...

### [Ryobi Battery Charger Flashing Red? 4 Reasons Why](#)

A RED light with a flashing GREEN light means the battery is charging normally. A RED light that is off and a solid GREEN light means charging is complete, but the charger ...



### **Ryobi Battery Charger**

Press down on the battery pack to be sure contacts on the battery pack engage properly with contacts in the charger. NOTE: After charging is complete, the green LED will remain on until the battery pack is removed from the charger or ...



### What do the Lights on a Ryobi Charger Mean?

When your Ryobi battery charger displays a solid red light, it's communicating one of three primary issues: a charging error, battery fault, or environmental problem.



## Contact Us

---

For catalog requests, pricing, or partnerships, please visit:  
<https://conrad.edu.pl>