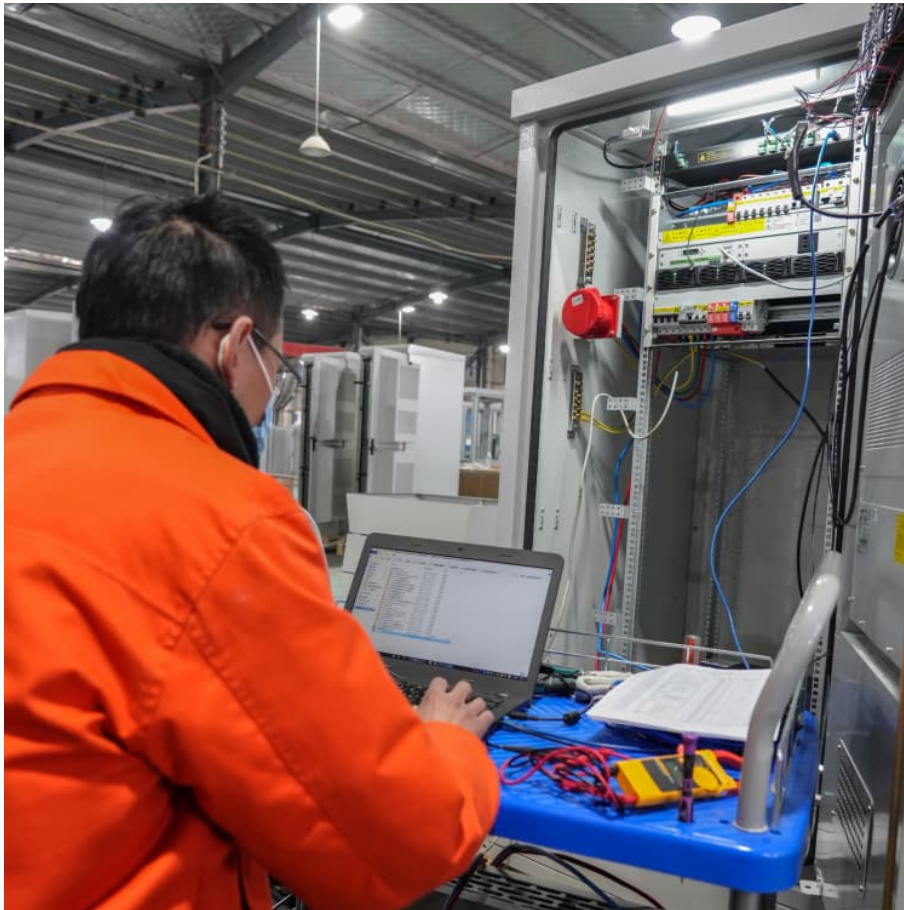


Ring main unit motor energy storage principle





Overview

Energy storage flywheel systems are mechanical devices that typically utilize an electrical machine (motor/generator unit) to convert electrical energy in mechanical energy and vice versa.

Energy storage flywheel systems are mechanical devices that typically utilize an electrical machine (motor/generator unit) to convert electrical energy in mechanical energy and vice versa.

Ring main unit motor energy storage principle in an electrical distribution system. It ensures reliability by using a ring configuration that allows electricity to flow through alternative routes. Even if one section fails, power continues uninterrupted from an alternative in a distribution.

The Ring Main Unit (RMU) plays a crucial role in power distribution and transmission. This article provides a detailed analysis of the RMU's working principle, including its definition, structure, classification, and applications, offering valuable insights for professionals, students, and anyone.

Ring Main Units (RMUs) are a vital component of medium-voltage power distribution networks, ensuring reliability, safety, and continuity of electrical supply. In this comprehensive guide, we delve into the core working principle of RMUs, their applications, advantages, and technical nuances that.

Hence, the discussion surrounding energy storage becomes intriguing, as it emphasizes the unit's dual role: facilitating power distribution while simultaneously conserving energy for unforeseen demands. Through this versatile approach, the energy storage capability becomes fundamental to ensuring.

A ring network—often referred to as a looped distribution system—forms a closed electrical circuit, with the primary power source supplying energy to this loop. Power flows through a high-voltage main line arranged in a ring configuration, branching out through high-voltage switches to various.



Ring main unit motor energy storage principle



ring main unit

The automation ready units now have integrated Remote Terminal Units (RTUs) in the form of the next-generation Gemini 3; enabling instant smart grid functionality. The structural tank welding ...

[What is an RMU? The Ultimate Guide to Ring Main Units](#)

Energy Efficiency and RMUs Ring Main Units (RMUs) are pivotal in driving efficiency within electrical infrastructures. As we advance towards a more sustainable and responsible energy ...



[Types of RMU - A Comprehensive Guide - ECSKSA](#)

What is a Ring Main Unit? A Ring Main Unit (RMU) is a switchgear that is used in medium-voltage electrical systems, typically ranging from 11kV to 36kV. It is primarily used ...



Ring Main Unit Energy Storage: Power Grids' Hidden Stabilizer

When grid frequency drops below 49.5Hz (that's your warning sign), these units release stored energy within 2 milliseconds. Conversely, they



absorb excess power when frequency exceeds ...



[Energy storage unit principle block diagram](#)

What is a battery energy storage system? A battery energy storage system is of three main parts; batteries, inverter-based power conversion system (PCS) and a Control unit called battery ...

[Ring main unit energy storage principle](#)

This manual provides details needed to install and operate the SafeLink ring main unit. The SafeLink unit is certified for use on distribution systems operating at up to 12kV.



[WHAT IS A RING MAIN UNIT WORKING PRINCIPLE](#)

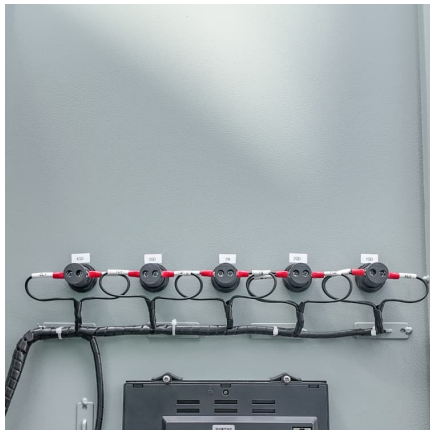
What is the working principle of the energy storage high-voltage box Each high-voltage storage system consists of several individual battery cells. If these cells are connected in series, the ...

Research on Online Monitoring Technology



in the Integration

The distribution network is a crucial and highly effective component in the construction of the ubiquitous power Internet of Things (IoT). To enhance the construction, ...



What Is a Ring Main Unit (RMU) Switchgear? A Comprehensive ...

This article explores ring main unit switchgear, explaining its key features, operation, and various types, to help you understand its role in electrical distribution systems.

Dhafir Group For General Trading

In an electrical power distribution system, a ring main unit (RMU) is a factory assembled, metal enclosed set of switchgear used at the load connection points of a ring-type distribution ...



[Ring Main Distribution System: Definition, Diagram, ...](#)

A Ring Main Distribution System is a closed-loop configuration of electrical distribution, where the power supply forms a ring. This system ...



Microsoft Word

The ring main unit matched with circuit breaker is mainly used as the main electric source inside ring net power supply system, the inlet cabinet of reserve electric source and the middle seg ...



RING MAIN UNIT WORKING PRINCIPLE

An energy storage system consists of three main components: a power conversion system, which transforms electrical energy into another form of energy and vice versa; a storage unit, which ...

[Ring main unit energy storage schematic diagram](#)

On ring main units, a gas pressure indicator is fitted to the tank for providing a reliable warning indication against low gas levels. The gas pressure indicator has sections to show the ...



[Understanding the 10kV Distribution Ring Main Unit ...](#)

The 10kV distribution ring main unit is a vital component in medium-voltage power distribution systems. Its primary function is to ensure ...



Brushless Ring Motors: An Insight

Step into the world of brushless ring motors, the silent performers that play a pivotal role in driving various machines across different industrial sectors. This article aims to ...



Ring Main Unit-hezong_Ring_network

TPS3 Atmospheric pressure Sealed Air Insulated Ring Main Unit TPS3 atmospheric pressure sealed air insulated ring main unit is a new type of power distribution equipment launched by ...

Energy storage

Energy storage is the capture of energy produced at one time for use at a later time [1] to reduce imbalances between energy demand and energy production. A device that stores energy is ...



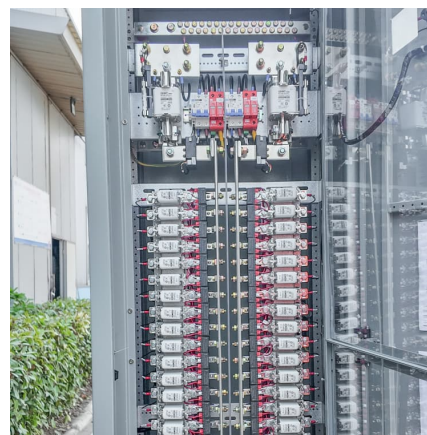


What Is a Ring Main Unit (RMU)? Functions and Operating Principles

Explore what a Ring Main Unit (RMU) is, how it operates within a looped distribution network, and why it's become an essential component in modern, compact, and ...

WHAT IS A RING MAIN UNIT

Ring main unit is energy storage Ring Main Units (RMUs) are electrical distribution devices that efficiently manage energy flow within electrical networks, 2. Energy storage in RMUs can occur ...



[Ring main unit motor energy storage principle](#)

Energy storage flywheel systems are mechanical devices that typically utilize an electrical machine (motor/generator unit) to convert electrical energy in mechanical energy and vice

[Why does the ring main unit store energy](#)

A ring main unit working principle revolves around its ability to distribute power efficiently in an electrical distribution system. It ensures reliability by using a ring configuration that allows ...



[You searched for ring main unit working principle](#)

In this technical article we take a deeper dive into the engineering of battery energy storage systems, selection of options and capabilities of BESS drive units, battery sizing ...



Ring Main Unit - An In-Depth Guide to Electrical Distribution

A Ring Main Unit (RMU) is an essential piece of equipment in the electrical power distribution system. Commonly used in secondary distribution networks, the RMU ...



What is Ring Main Unit (RMU)?

A ring main unit (RMU) is a critical component of a data center's electrical distribution system. It is responsible for receiving power from the main utility and distributing it throughout the facility to ...





[Switchgear Ring Main Unit Working Principle](#)

The Ring Main Unit (RMU) is a key component in modern medium voltage power networks, offering flexibility, safety, and space efficiency. Understanding its working principle, technical ...



[Understand the Importance of Smart Ring Main Unit ...](#)

Discover the benefits of a smart ring main unit (RMU) for secure power distribution in residential and industrial settings, with continuous power ...

Contact Us

For catalog requests, pricing, or partnerships, please visit:
<https://conrad.edu.pl>