

# **Residential ESS cost vs benefit calculation in Malaysia**





## Overview

---

Calculate your complete hiring costs for Malaysia employees, including payroll taxes, social security contributions, employee benefits, and management fees. This salary calculator provides accurate employer cost estimates for informed hiring decisions.

Calculate your complete hiring costs for Malaysia employees, including payroll taxes, social security contributions, employee benefits, and management fees. This salary calculator provides accurate employer cost estimates for informed hiring decisions.

Instantly calculate your total cost to employ — taxes, benefits, and more  
Calculate your complete hiring costs for Malaysia employees, including payroll taxes, social security contributions, employee benefits, and management fees. This salary calculator provides accurate employer cost estimates for.

The Malaysian Public Sector Accounting Standard (MPSAS) is based on International Public Sector Accounting Standard (IPSAS) 25, Employee Benefits from the Handbook of International Public Sector Accounting Pronouncements of the International Public Sector Accounting Standards Board, published by.

The computation of the value of living accommodation provided for employees by employers can be divided into 3 categories as follows: Living accommodation provided for the employee/service director/officer of the Government/Statutory Bodies. For all three categories, deductions can be made for: If.

In Malaysia, all employees who have worked for their employer for more than two continuous months are entitled to benefits. These include the Employees Provident Fund (EPF), Social Security Organization (SOCSO) insurance, and annual leave. Specific entitlements and eligibility criteria for employee.

Employee Self-Service (ESS) is an online portal or mobile application that enables employees to perform essential HR functions independently. ESS platforms are typically integrated with payroll and human resource management systems (HRMS), allowing employees to handle administrative



tasks.

companies in Asia provide their employees with additional benefits. Workers in Malaysia are entitled to paid annual leave (see also D 1), on-the-job compensation in case of illness as well as maternity and paternity leave. The companies also provide extensive voluntary ancillary services. What are the benefits of using ESS software in Malaysia?

Compliance with Malaysian Labor Laws ESS solutions help ensure compliance with Malaysia's Employment Act 1955, tax regulations, and statutory contributions (EPF, SOCSO, EIS). 4. Reduced Administrative Costs By automating payroll, leave, and attendance tracking, businesses reduce paperwork and manual processing costs. 5. Real-Time Data & Reporting.

What is employee self-service (ESS) in Malaysia?

Well, Employee Self-Service (ESS) in Malaysia is here to save the day! With just a few clicks, employees can access their payslips, apply for leave, and update personal details—without bombarding HR with endless emails.

How are EIS contributions calculated in Malaysia?

EIS Contributions: Both employer and employee contribute 0.2% each of the employee's monthly salary. Income Tax (PCB) Deductions: Calculated according to the progressive tax rates set by LHDN (Lembaga Hasil Dalam Negeri Malaysia). Use our net salary calculator Malaysia to simplify this process.

What is Malaysia Employment Cost Calculator?

Whether you're a small business owner in Malaysia, a HR professional, or an individual employee, our Malaysia Employment Cost Calculator is an essential tool to simplify complex financial calculations and provide clear, concise financial insights.

How ESS platform is transforming HR management in Malaysia?

Look for platforms that provide: Employee Self-Service (ESS) is revolutionizing HR management in Malaysia, making operations more efficient, compliant, and employee-centric. By implementing a well-integrated ESS platform, businesses can enhance productivity, cut administrative costs, and ensure regulatory compliance.



## How to calculate holistic recruitment and first year employment costs in Malaysia?

If you are looking to calculate holistic recruitment and first year employment costs in Malaysia use this calculator. Note<sup>1</sup> Salary + average employment costs annually. When considering hiring an employee in Malaysia, it's important to recognize that there are additional costs involved beyond the gross salary you plan to offer.



## Residential ESS cost vs benefit calculation in Malaysia

---



### [NEM3 FaO - Renewable Energy Malaysia](#)

The Government has introduced the Net Energy Metering (NEM) 3.0 programme to provide opportunity for more users to install the solar photovoltaic (PV) systems on the roofs of their ...

### **Battery Energy Storage Systems (BESS)**

Battery Energy Storage Systems Energy Storage Systems (ESS) have become an integral part of modern electrical infrastructure. So much so that they are even beginning to make their way into the residential sector. ...



### [Integrated ESS application and economic analysis](#)

Abstract Chapter 5 introduces integrated energy storage system (ESS) designs, typical ESS application in power systems, and methods for analyzing benefits from ESSs ...



### [LiFePO4 vs NMC Home ESS: China Cost/Benefit Study](#)

LiFePO4 vs NMC Home ESS: China Study. LFP: 6,000 ?????, \$0.08/kWh, safer. NMC: Higher density, lower upfront cost. 2025 supplier data &



climate guides.



### Choosing the Right Energy Storage System (ESS) for Your Home

Choosing the right energy storage system (ESS) for your home involves understanding the available battery types, sizing, costs, and key factors that influence your ...



### [Employee Stock Options Tax Implications Malaysia](#)

In Part 1, we explored some FAQs about the basic mechanics and workings of an Employee Stock Option Scheme (" ESOS "). In Part 2, we address the basic tax implications on both the company and employee of an ...



### [NEM 3.0 Malaysia: Everything You Need to Know](#)

The NEM 3.0 Malaysia scheme promotes solar energy adoption by allowing participants to offset electricity bills through solar PV systems. Active from 2021 to 2024, it provides an opportunity to reduce energy costs while ...





### [NEM 3.0 announced in Malaysia - So what's new in...](#)

Unlike previous Net Energy Metering programs, the newly announced NEM 3.0 will only run till 2023 while keeping to 500MW of solar capacity for Malaysians and investors.

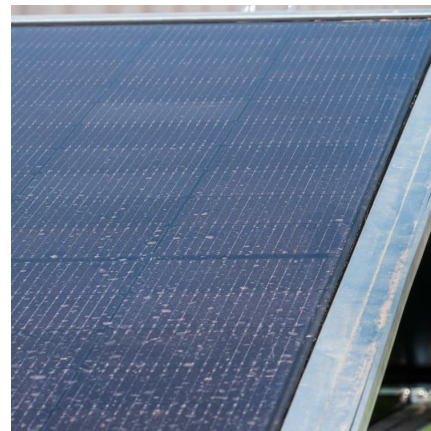


### **Residential PV-ESS System Market**

These regulatory and pricing mechanisms collectively determine whether residential solar-storage systems operate as cost centers or revenue-generating assets, fundamentally reshaping ...

### **How to Size a Residential Energy Storage System (ESS) for EV ...**

Learn how to size a residential ESS for EV charging across Europe. Discover key sizing formulas, real-world examples, and Ultimat Energi solutions.



### **Residential Lithium battery ESS**

Residential ESS The world of renewable energy is constantly evolving, and the use of residential energy storage systems or residential ESS is on the rise. Residential ESS is a type of residential battery storage system that captures ...



How to determine the value of living accommodation?

If the living accommodation is provided for less than 12 months the benefit should be reduced appropriately, e.g. if the accommodation is provided for 6 months and the yearly ...



**Techno-economic Aspects of Energy Storage System for Residential**

The ability of the ESS to act as the source of energy during no-renewable energy source (RES) hours makes it the best candidate to avoid grid instability. Rechargeable battery ...

Employee benefits in Malaysia: all you need to know

Use this guide to employee benefits in Malaysia to help your team understand how to set up and manage a compliant benefits program for new starters.



**Why Long-Duration Energy Storage**

A net zero energy system requires energy storage for 24/7 renewables. When the sun sets and the wind dies, long-duration energy storage will keep the lights on.



### **A31\_IPSAS\_25\_formatted2011**

In determining the present value of its defined benefit obligations and the related current service cost and, where applicable, past service cost, an entity shall attribute benefit to periods of ...



### **How is the termination benefit payment calculated and when is ...**

Employees are entitled to receive written termination benefits amount and its calculation method. Termination benefits must be paid no later than 7 days from termination date. A termination ...

### Commercial vs. Residential Energy Storage Systems: ...

Commercial ESS are often used to power entire buildings, facilities, or industrial operations. Cost: Commercial ESS is generally more expensive than residential ESS since they require more energy storage ...



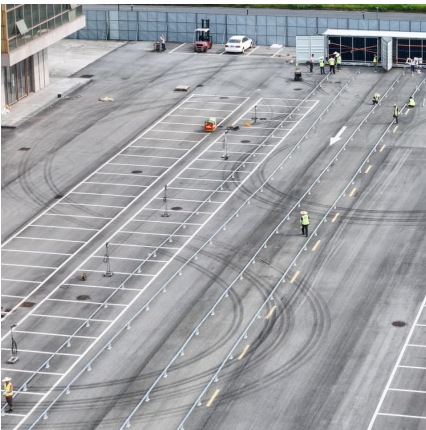
### Solar Photovoltaic System Cost Benchmarks

The U.S. Department of Energy's solar office and its national laboratory partners analyze cost data for U.S. solar photovoltaic systems to develop cost benchmarks to measure progress ...



### [Salary, Labour Costs & Employment Law in Malaysia](#)

annual leave depends on the duration of company service in Malaysia. In practice, Malaysian companies grant their employees 10 to 14 days annual leave with duration of company service ...



### [Petrol vs EV : Is EV Cheaper To Drive in Malaysia?](#)

So the maximum charge for a residential home, to fully charge your Nissan Leaf would be approximately RM26.49. Just for a little bit of fun, here's the cost to fully charge other EV car ...

### **PCB Calculator Malaysia 2025 , Monthly Tax Deduction Calculator**

Income tax in Malaysia is calculated using a progressive tax system with different tax rates for different income brackets. To calculate your monthly PCB, determine your annual taxable ...





### [Understanding ESOS and tax implications in Malaysia](#)

In Malaysia, the regulation of ESOS is overseen by several government bodies, including the Securities Commission Malaysia and the Inland Revenue Board of Malaysia ...

### Brochure

Residential energy storage systems (ESS) and multi-modular topology for 2nd life batteries  
Infineon's energy storage system designs Energy storage has been an integral component of ...



### [Guide to Compensation and Benefits in Malaysia](#)

Guide to Compensation and Benefits in Malaysia  
Compensation and benefits play a pivotal role in attracting, retaining, and motivating employees in Malaysia. A well-structured compensation package and a robust benefits ...

## Contact Us

---

For catalog requests, pricing, or partnerships, please visit:  
<https://conrad.edu.pl>