

Kwh per m2 solar panels





Overview

Residential solar panel systems cost \$0.09 to \$0.11 per kilowatt-hour (kWh) installed on average, though prices vary greatly depending on the type of panels and how much daily sun they receive. [pdf] [FAQS about How much electricity does it cost to install photovoltaic panels per.

Residential solar panel systems cost \$0.09 to \$0.11 per kilowatt-hour (kWh) installed on average, though prices vary greatly depending on the type of panels and how much daily sun they receive. [pdf] [FAQS about How much electricity does it cost to install photovoltaic panels per.

The amount of sunlight received per square meter on the solar panels determines the output you will receive from the solar panel system. So, if you are planning to get a solar panel system for your house, it is better to understand the solar power per square meter calculator. Also, you will learn.

Solar panels have become a cornerstone of renewable energy, but many wonder: How much power can a single square meter of solar panels actually produce?

Let's break down the science behind photovoltaic efficiency. Under optimal conditions (5 peak sun hours): At noon under direct sunlight: *Note: 1m².

To determine the amount of solar panel area required to generate 1 kilowatt-hour (kWh) of electricity, several factors come into play, including the efficiency of solar panels, sunlight availability, and geographical location. 1. Solar panel efficiency, 2. Sunlight duration, 3. Geographic location.

Here's a basic equation you can use to get an estimate of how many solar panels you need to power your home: Solar panel wattage x peak sun hours x number of panels = daily electricity use Obviously, electricity use, peak sun hours, and panel wattage will be different for everyone. And since you.

On a clear day, each square metre of the Earth's surface receives approximately 1,000 watts of solar energy, also known as 1 kW/m². This energy can be converted into electricity using solar panels, making it a



reliable and sustainable source of power for homes and businesses. However, not all of.

Measuring solar energy per square meter helps evaluate electricity generation capabilities and is crucial for assessing solar panels' effectiveness and solar farms' ability to harness sunlight and reduce fossil fuel dependence, which contributes to climate change. What is Solar Energy Per Square. How much solar power is generated per square metre?

The amount of solar power generated per square metre varies based on the type of solar panel used. Here's a comparison: 1. Monocrystalline Solar Panels - Up to 22% efficiency, producing 220W per square metre. 2. Polycrystalline Solar Panels - Around 18% efficiency, generating 180W per square metre. 3.

How many solar panels per m²?

3. Solar Panel Output Per m² (Square Meter) The most popular domestic solar panel system is 4 kW. This has 16 panels, with each one: To work out the output per square meter, use this formula: $\text{Number of panels} \times \text{Capacity of the solar panel system} \div \text{Total size of the system (number of panels} \times \text{size of one panel)}$.

How do you calculate solar power output per square meter?

To work out the output per square meter, use this formula: $\text{Number of panels} \times \text{Capacity of the solar panel system} \div \text{Total size of the system (number of panels} \times \text{size of one panel)}$ Example The amount of electricity produced by a solar panel can vary based on these factors:.

How to calculate solar panel area per kW?

Steps to Calculate: Electricity usage = 300 kilowatt-hour Sun hours = 5 hours Percentage of offset = 80% Press Calculate Solar array size Estimate = 0.18 kilowatt After this, let's learn about solar panel area per kW.

How much power does a solar panel use?

Solar panel power ratings range from 250W to 450W. Based on solar.com sales data, 400W is the most popular power rating and provides a great balance of output and Price Per Watt (PPW). If you have limited roof space, you may consider a higher power rating to use fewer panels. If you want to spend less per panel, you may consider a lower wattage.



How much electricity does a thin film solar panel produce?

Thin-Film Solar Panels – 10-12% efficiency, producing 100-120W per square metre. To put this into perspective, if you install 10 square metres of monocrystalline solar panels, you could generate up to 2,200 watts (2.2 kW) of electricity, sufficient to power basic household appliances.



Kwh per m2 solar panels



[A Complete Guide To Solar Panel Output](#)

While solar panel output can tell you what your solar panel is capable of producing under ideal conditions, efficiency tells you how much sunlight your solar panel is ...

Solar Energy Generation Per Square Metre: A Complete Guide

In this guide, we'll explore how much solar power can be harnessed per square metre, how solar panels work, the factors that impact their efficiency, and the home solar ...



How Many Solar Panels Do I Need To Power a House in 2025?

A big factor in determining how many solar panels you need to power your home is the amount of sunlight you get, known as peak sun hours. A peak sun hour is when the intensity of sunlight ...

Solar Energy Per Square Meter: How Much Power Can You Get?

This article explores solar energy per square meter and the various factors that influence energy output, such as location, climate, and



panel efficiency. It provides crucial ...



How many square meters of solar panels can generate 1 kWh of

To determine the amount of solar panel area required to generate 1 kilowatt-hour (kWh) of electricity, several factors come into play, including the efficiency of solar panels, ...

[Solar Power per Square Meter Calculator](#)

Well, today you learned about the solar power per square meter calculator and the factors that you need to note down while doing the calculations. Solar panels kWh ...



[Solar Energy Generation Per Square Metre: A ...](#)

In this guide, we'll explore how much solar power can be harnessed per square metre, how solar panels work, the factors that impact their efficiency, and the home solar system cost.



[How many square meters of solar panels can ...](#)

To determine the amount of solar panel area required to generate 1 kilowatt-hour (kWh) of electricity, several factors come into play, including the efficiency of solar panels, sunlight availability, and geographical ...



[A Complete Guide To Solar Panel Output](#)

While solar panel output can tell you what your solar panel is capable of producing under ideal conditions, efficiency tells you how much sunlight your solar panel is capable of converting into electricity you can use in ...

POWER PER SQUARE METER CALCULATOR

This metric shows how much power a solar panel produces per square meter of surface area under standard conditions.. The average solar energy received per square meter on the earth ...



POWER PER SQUARE METER CALCULATOR

This metric shows how much power a solar panel produces per square meter of surface area under standard conditions.. The average solar energy received per square meter on the earth surface is around 1000 W/m², but this can vary ...



[Solar Panel Output per Square Meter: Efficiency](#)

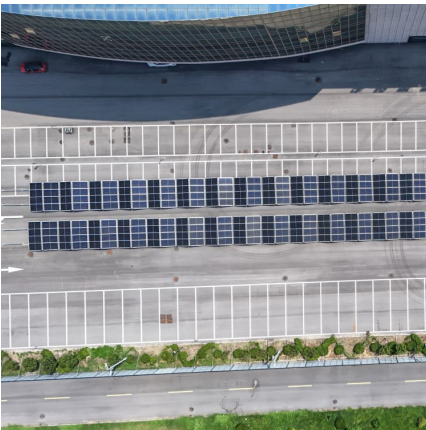
...

Solar panels have become a cornerstone of renewable energy, but many wonder: How much power can a single square meter of solar panels actually produce? Let's break down the science behind photovoltaic efficiency.



Solar Panel Output per Square Meter: Efficiency Factors & Future ...

Solar panels have become a cornerstone of renewable energy, but many wonder: How much power can a single square meter of solar panels actually produce? Let's break down the ...



[Solar Energy Per Square Meter: How Much Power](#)

...

This article explores solar energy per square meter and the various factors that influence energy output, such as location, climate, and panel efficiency. It provides crucial calculations, compares energy production across ...





Contact Us

For catalog requests, pricing, or partnerships, please visit:
<https://conrad.edu.pl>