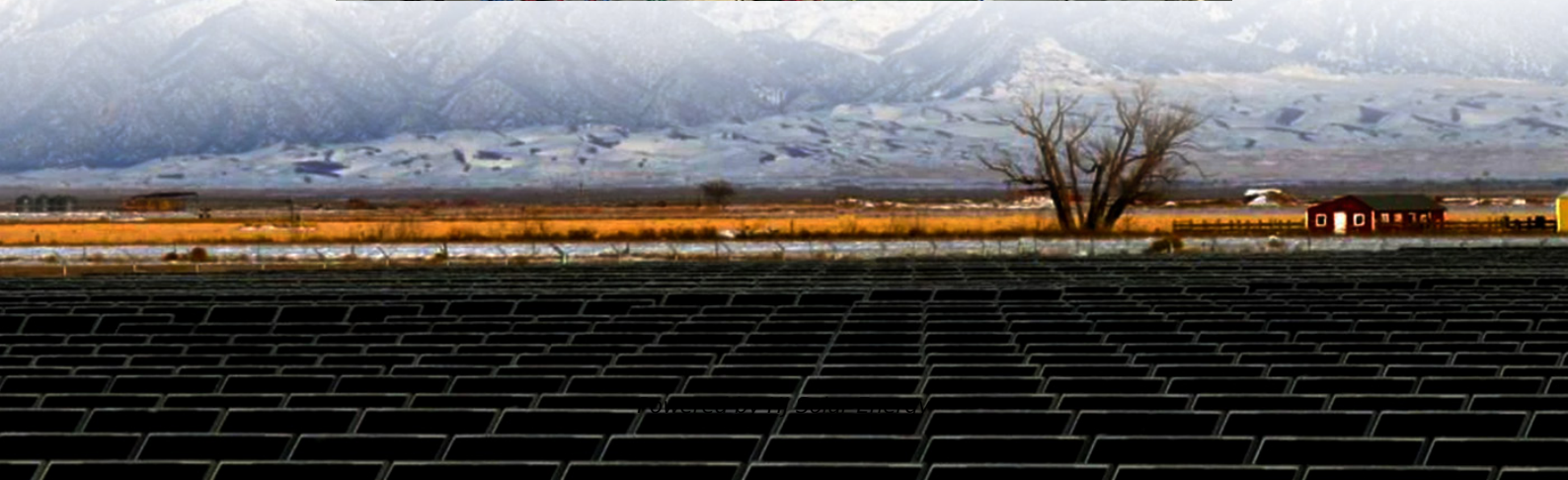


Is the electric wheelchair battery an energy storage battery





Overview

This article explores various battery technologies that power electric wheelchairs, delving into their features, benefits, and maintenance. From traditional 12v wheelchair batteries to modern lithium wheelchair batteries, each type offers unique advantages and challenges.

This article explores various battery technologies that power electric wheelchairs, delving into their features, benefits, and maintenance. From traditional 12v wheelchair batteries to modern lithium wheelchair batteries, each type offers unique advantages and challenges.

This article explores various battery technologies that power electric wheelchairs, delving into their features, benefits, and maintenance. From traditional 12v wheelchair batteries to modern lithium wheelchair batteries, each type offers unique advantages and challenges. Understanding these can.

Electric wheelchairs are powered with deep cycle AGM (absorbed glass mat) or gel sealed lead-acid batteries. These wheelchair battery types are cheaper and safer than lithium-ion but are heavier and require more maintenance. When the juice is running low, a wheelchair with this type of battery will.

Choosing the right electric wheelchair battery types is essential for optimal performance and reliability. In this article, we explore lead-acid, lithium-ion, AGM, and gel cell batteries to help you make the best choice for your needs. Many companies in the electric wheelchair industry.

Different types of batteries are used in electric wheelchairs. The three main types are lead-acid, lithium-ion, and nickel-metal hydride batteries. Each battery type has its pros and cons. The batteries vary in how much they weigh, how long they last, how much they cost, and how eco-friendly they.

The battery capacity of a wheelchair battery refers to the amount of electrical energy it can store. A higher capacity battery will last longer before needing to be recharged. However, a higher capacity battery is also usually larger and heavier than a lower capacity battery. 2. Battery voltage:.



Electric wheelchairs roll with one of two battery kinds: sealed lead acid (SLA) batteries or lithium-ion batteries. SLA batteries have been the big pick forever. They're cheap and super easy to grab. These batteries are sturdy and solid for regular use. But they've got some hiccups. They're hefty. Do electric wheelchairs use batteries?

Electric wheelchairs use batteries to power their motors. Batteries give electric wheelchairs the ability to move. Different types of batteries are used in electric wheelchairs. The three main types are lead-acid, lithium-ion, and nickel-metal hydride batteries. Each battery type has its pros and cons.

Are lithium ion batteries good for electric wheelchairs?

They're ideal for people who use their electric wheelchair frequently because they can handle deep discharges without being damaged. Lithium-ion batteries are the newest type of battery technology used in electric wheelchairs. They're lightweight, compact, and offer longer battery life than other options.

What type of battery does a wheelchair use?

Typically, two 12-volt batteries are connected in series to provide a 24-volt system, essential for the power requirements of most wheelchairs. These batteries are often lead-acid type, known for their durability and cost-effectiveness. Gel batteries are a type of sealed lead-acid battery, but with a twist: they use a gelified electrolyte.

Do wheelchair batteries need maintenance?

The maintenance needs of wheelchair batteries can vary significantly depending on the type of battery used. Gel batteries, AGM batteries, and lithium wheelchair batteries all have different care requirements: Gel batteries require very little maintenance as they are sealed and do not need watering.

How do you store a lithium electric wheelchair battery?

Store batteries properly: When not in use, it is essential to store lithium electric wheelchair batteries in a cool and dry place. Extreme temperatures and humidity can negatively impact battery performance and lifespan. Additionally, avoid storing the batteries in a fully discharged state, as this can lead to irreversible damage.

Can a wheelchair use a gel battery?



Wheelchairs can use gel batteries or AGM batteries. Gel batteries and AGM batteries are deep cycle batteries specifically designed for mobility applications. Gel batteries use a gel electrolyte, while AGM batteries use an absorbent glass mat.



Is the electric wheelchair battery an energy storage battery



EVE Energy Unveils Large Cylindrical Battery and Battery ...

5 ???· EVE Energy showcased its large cylindrical cells and pioneering Battery Passport at IAA 2025, highlighting innovations in safety, fast-charging, and full lifecycle sustainability to ...

[What Batteries Are Used In Electric Wheelchairs?](#)

This article will explore the various battery options available, compare their performance and maintenance needs, offer tips on selecting the ...



Hinduja Group to Invest INR7,500 Crore in Battery Storage Systems ...

In a major boost to India's clean energy and electric mobility ecosystem, Hinduja Group Limited has announced a massive INR7,500 crore investment in Tamil Nadu to set up ...

10 reasons why battery energy storage systems (BESS) support the energy

The application of battery energy storage systems (BESS) is a key element on the road to energy transition, helping to speed up the replacement of fossil fuels with ...



Examine the fire safety hazards of Lithium-Ion Batteries

E-bike, e-scooter and other e-mobility devices have become common modes of transportation. These devices are often powered by lithium-ion batteries due to their favorable combination of ...



[Wheelchair & Scooter Battery Guide , Batteries Plus](#)

Here's what you need to know about electric wheelchair and mobility scooter batteries and maintenance, and how to choose the right power source to keep you moving. ...



[Battery energy storage systems , BESS](#)

Battery energy storage (BESS) offer highly efficient and cost-effective energy storage solutions. BESS can be used to balance the electric grid, provide ...





Electric wheelchair battery types introduction and sizes

High energy density: Lithium electric wheelchair batteries have a high energy density, meaning they can store a significant amount of energy ...



[High Efficiency Energy Storage Battery](#)

With a range of over 20km, you can go grocery shopping or strolling, eliminating the need to count on battery life Hot Tags : Electric Wheelchair Battery Electric Wheelchair Battery ...

Comprehensive review of energy storage systems technologies, ...

Battery, flywheel energy storage, super capacitor, and superconducting magnetic energy storage are technically feasible for use in distribution networks. With an energy density ...



The Ultimate Guide to Battery Energy Storage Systems (BESS) ...

Battery Energy Storage Systems (BESS) are pivotal technologies for sustainable and efficient energy solutions. This article provides a comprehensive exploration of ...



Researchers at the University of Münster analyse future European energy

1 ??· Electric mobility and stationary energy storage: Strengthening local battery supply chains will require a substantial amount of energy in Europe Europe accounts for around 25 percent of ...



Researchers at the University of Münster analyse future European energy

1 ??· 16.09.2025 - Researchers at the University of Münster analyse future European energy demand for battery cell production Electric mobility and stationary energy storage: ...



[The Future of Energy Storage: Five Key Insights on...](#)

Breakthroughs in battery technology are transforming the global energy landscape, fueling the transition to clean energy and reshaping ...





[What is battery storage? . National Grid](#)

Battery storage, or battery energy storage systems (BESS), are devices that enable energy from renewables, like solar and wind, to be stored and then ...

[BESS - Battery Energy Storage System . Volvo Energy](#)

What is a BESS? A battery energy storage system, also called battery storage, works like a large-scale rechargeable battery. It stores electricity when it's ...



Amazon : CXZCXZ 24V 12AH Lithium Battery for Electric Wheelchair

About this item ?High-Efficiency Power Supply?Our 24V lithium battery delivers superior performance compared to traditional lead-acid batteries.Replace 2 pieces of 12V lead ...



[Top Electric Wheelchair Battery Types for Reliable ...](#)

These advanced energy sources drive the performance and efficiency of electric wheelchairs by extending greater operational duration and ...



An electric wheelchair is designed to run on a single 12-V battery

The energy stored in the battery of an ****electric**** wheelchair is calculated by multiplying the voltage (Volts) by the electric charge (ampere-hours). The charge can be ...



[Do All Electric Wheelchairs Have Lithium Batteries?](#)

This article explores various battery technologies that power electric wheelchairs, delving into their features, benefits, and maintenance. ...



Key Differences Between Power Batteries and Energy Storage ...

Power batteries deliver the high output needed for mobility and performance, while energy storage batteries ensure steady, reliable energy over time. As technology ...





[Examine the fire safety hazards of Lithium-Ion ...](#)

E-bike, e-scooter and other e-mobility devices have become common modes of transportation. These devices are often powered by lithium-ion batteries due to ...



[Lithium Ion Batteries and Electric Wheelchairs](#)

This paper aims to conduct a comparative analysis between three lithium battery technologies and the original ESS of a type B400 electric wheelchair, taking into account ...

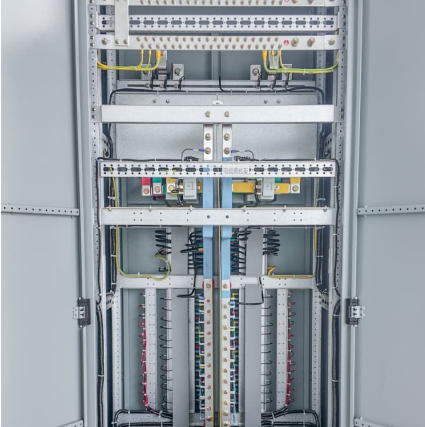
Electric wheelchair power choice: lithium battery and lead-acid ...

The performance of these batteries directly impacts the user experience. Currently, lithium batteries and lead-acid batteries are two commonly used battery types in ...



The Future of Energy Storage: Five Key Insights on Battery ...

Breakthroughs in battery technology are transforming the global energy landscape, fueling the transition to clean energy and reshaping industries from transportation ...



Battery Energy Storage Systems (BESS): How They ...

Battery Energy Storage Systems (BESS), also referred to in this article as "battery storage systems" or simply "batteries", have become ...



Contact Us

For catalog requests, pricing, or partnerships, please visit:
<https://conrad.edu.pl>