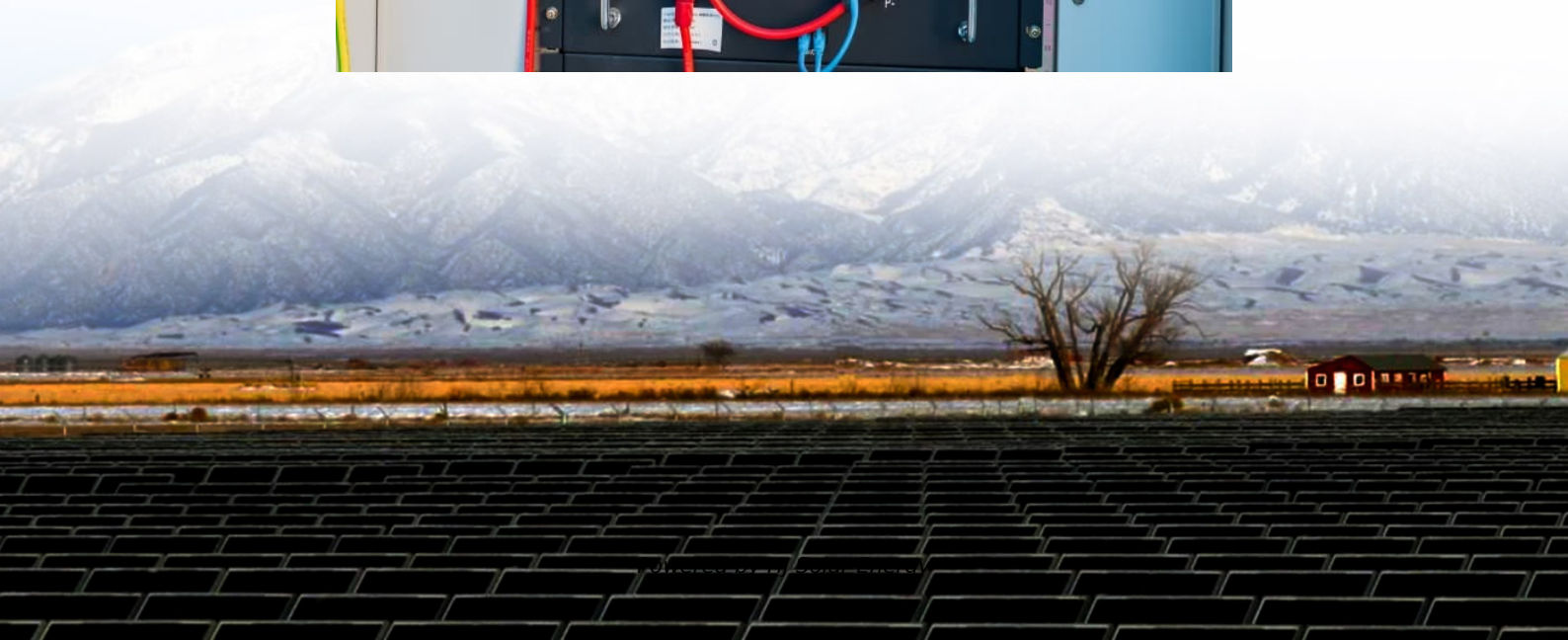


How to know if solar battery is fully charged





Overview

A battery is fully charged when it reaches voltage plateau (e.g., 54.6V for 48V Li-ion), charging current drops below 3% of capacity (C/30), and temperature stabilizes. Modern BMS (Battery Management Systems) often signal full charge via LEDs, apps, or audible alerts.

A battery is fully charged when it reaches voltage plateau (e.g., 54.6V for 48V Li-ion), charging current drops below 3% of capacity (C/30), and temperature stabilizes. Modern BMS (Battery Management Systems) often signal full charge via LEDs, apps, or audible alerts.

Most solar batteries have LED lights, digital displays, or voltmeters that directly report the state of charge. If the indication reading is 100%, then the battery is fully charged. However, there are many other methods that you can use to determine if your battery is fully charged. In this.

Monitoring the battery voltage using a multimeter and utilizing the indicators provided by your solar charge controller are effective methods to determine if your solar battery is fully charged. Evaluating excess energy and optimizing its usage can maximize the benefits of your solar power system.

You can employ several methods to determine if a solar battery is fully charged. Charge Controller Indicator: Most charge controllers have visual indicators or a digital display that shows the charging status and battery level. When the battery is full, the controller typically indicates this with.

Indicators of Full Charge: Identify key signs of a fully charged battery, including LED light colors and gauge readings from a battery management system, to optimize energy usage. Effective Charge Checking Methods: Utilize tools like multimeters and battery management systems to accurately assess.

Your solar inverter shows the State of Charge (SoC) as a percentage, making it the easiest way to know if your battery is full. Simply press any button to wake the screen and look for the battery status or SoC reading. Setting your maximum charge level to 90% for everyday use can add years to your.



To check if your solar batteries are in the bulk charging stage, you can use a solar charge controller that displays the current battery voltage. Some advanced charge controllers may also have LED indicators or digital screens to show the current charging stage. Once the battery voltage reaches a.



How to know if solar battery is fully charged



[How To Know If The Solar Battery Is Fully Charged?](#)

A fully charged solar battery typically has a higher voltage than its rated voltage; for instance, a 12V battery may read around 12.7 to 13.7 volts when fully charged, depending on the battery ...

[How to know if solar battery is fully charged?](#)

To check the battery charge level, simply consult the display on your solar battery. This will typically show the current charge level as a percentage, indicating how much of the battery's ...



How to Know if Solar Battery is Fully Charged: Tips for Effective

How can I tell if my solar battery is fully charged? You can determine if your solar battery is fully charged by checking visual indicators like color-coded LED lights or ...

[How do I know if my solar battery is fully charged?](#)

This article explains several methods to check if a solar battery is fully charged, including checking the battery's voltage, looking at the



charge controller's LED lights, and using the display screen on the charge controller.



[How To Tell If Your Solar Battery Is Full Voltage](#)

This guide provides practical tips and essential insights on determining if your solar battery is fully charged. It covers different battery types, key components, and indicators ...

How to Know If Your Solar Battery is Fully Charged (3-Step Guide)

To know if your solar battery is fully charged, check the display on your solar inverter or charge controller for a "100%" State of Charge (SoC) or a "Float" status light.



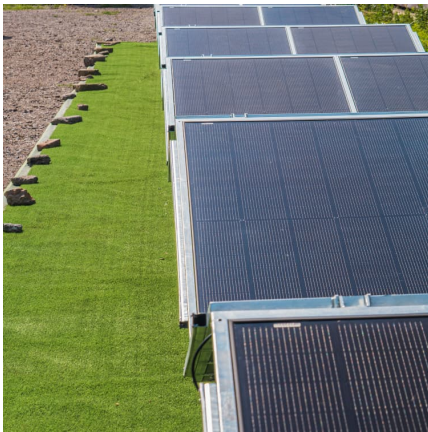
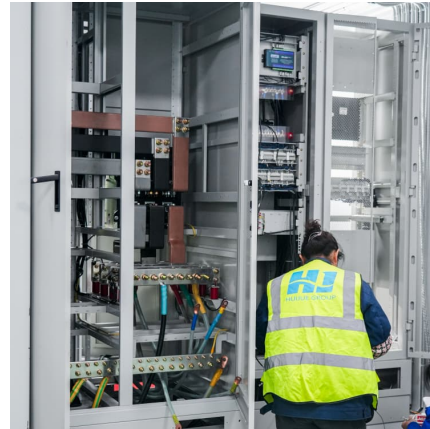
[How To Know If The Solar Battery Is Fully Charged?](#)

A fully charged solar battery typically has a higher voltage than its rated voltage; for instance, a 12V battery may read around 12.7 to 13.7 volts when fully charged, depending on the battery technology.

[How to Know if a Solar Battery is Fully Charged](#)



Discover how to determine if your solar battery is fully charged. Learn the essential methods and tools for monitoring battery voltage and state of charge.



How to Know if Your Solar Battery is Fully Charged (I Found 5 ...

In this comprehensive guide, we'll cover all the signs and tools to accurately determine your solar battery's state of charge. We'll also discuss what affects charging time, ...

[How do I know if my solar battery is fully charged?](#)

This article explains several methods to check if a solar battery is fully charged, including checking the battery's voltage, looking at the charge controller's LED lights, and using ...



[How Do I Know My Battery Is Fully Charged?](#)

A battery is fully charged when it reaches voltage plateau (e.g., 54.6V for 48V Li-ion), charging current drops below 3% of capacity (C/30), and temperature stabilizes. Modern ...



How Do I Know When My Solar Batteries Are Fully ...

The most common method to check if your solar batteries are fully charged is by monitoring the battery voltage. When the battery reaches its full capacity, the voltage will stabilize at a specific level, which depends on the ...



How Do I Know When My Solar Batteries Are Fully Charged

The most common method to check if your solar batteries are fully charged is by monitoring the battery voltage. When the battery reaches its full capacity, the voltage will ...

Contact Us

For catalog requests, pricing, or partnerships, please visit:
<https://conrad.edu.pl>