

# How many kwh will a solar panel generate





## Overview

---

Typically, a standard residential solar panel produces between 250 to 400 watts under ideal conditions. This translates to approximately 1 to 2 kilowatt-hours (kWh) of electricity per day, depending on factors like location and weather.

Typically, a standard residential solar panel produces between 250 to 400 watts under ideal conditions. This translates to approximately 1 to 2 kilowatt-hours (kWh) of electricity per day, depending on factors like location and weather.

Most common solar panel sizes include 100-watt, 300-watt, and 400-watt solar panels, for example. The biggest the rated wattage of a solar panel, the more kWh per day it will produce. How Much Sun Do You Get (Peak Sun Hours). Obviously, the more sun you get, the more kWh a solar panel will produce.

Panel wattage is related to potential output over time — e.g., a 400-watt solar panel could potentially generate 400 watt-hours of power in one hour of direct sunlight. 1,000 watts (W) equals one kilowatt (kW), just as 1,000 watt-hours (Wh) equals one kilowatt-hour (kWh). How much energy does a.

On average, a solar panel can output about 400 watts of power under direct sunlight, and produce about 2 kilowatt-hours (kWh) of energy per day. Most homes install around 18 solar panels, producing an average of 36 kWh of solar energy daily. That's enough to cover most, if not all, of a typical.

Two variables dictate how much energy your solar panels produce: 1. Solar Panel Wattage: Higher-wattage panels generate more kWh. Common sizes include 100W (small setups), 300-400W (residential), and 500W+ (commercial systems). Example: A 500W panel produces 50% more energy than a 250W panel under.

The amount of electricity a solar panel system produces is measured in kilowatts (kW), which represents the rate of power generation. Energy consumption, on the other hand, is measured in kilowatt-hours (kWh), indicating how much electricity is used over time. Excess solar energy can be



stored in a.

This tool is designed to help you estimate the daily, monthly, or yearly energy output of your solar panel system in kilowatt-hours (kWh). By taking into account factors such as solar panel size, type, inverter efficiency, and location-specific solar radiation, this calculator provides a more. How many kWh does a solar panel produce a month?

Depending on its wattage, an average solar panel may produce anywhere from 25 kWh to 60 kWh per month. To calculate a solar panel's monthly production in kilowatt-hours, multiply its expected daily output by the number of days in a month. Statistically speaking, the average number of days per month is 30.4.

How many Watts Does a solar panel produce?

Panel wattage is related to potential output over time — e.g., a 400-watt solar panel could potentially generate 400 watt-hours of power in one hour of direct sunlight. 1,000 watts (W) equals one kilowatt (kW), just as 1,000 watt-hours (Wh) equals one kilowatt-hour (kWh). How much energy does a solar panel produce?

.

How many kWh does a 100 watt solar panel produce?

The calculator will do the calculation for you; just slide the 1st wattage slider to '100' and the 2nd sun irradiance slider to '5.79', and you get the result: A 100-watt solar panel installed in a sunny location (5.79 peak sun hours per day) will produce 0.43 kWh per day.

How many kWh does a 300W solar panel produce a day?

We can see that a 300W solar panel in Texas will produce a little more than 1 kWh every day (1.11 kWh/day, to be exact). We can calculate the daily kW solar panel generation for any panel at any location using this formula. Probably, the most difficult thing is to figure out how much sun you get at your location (in terms of peak sun hours).

How much energy does a 400 watt solar panel produce?

A 400-watt solar panel will produce anywhere from 1.20 to 1.80 kWh per day (at 4-6 peak sun hours locations). The biggest 700-watt solar panel will



produce anywhere from 2.10 to 3.15 kWh per day (at 4-6 peak sun hours locations). Let's have a look at solar systems as well:.

How many solar panels per day?

Find your local peak sun hours (consult a solar map or use an estimate). For example, if you use 30 kWh per day, have 4.5 sun hours and plan to install 400 W panels:  $400 \text{ W} \times 4.5 = 1,800 \text{ Wh}$  (1.8 kWh) per panel per day.  $30 \text{ kWh} \div 1.8 \text{ kWh} \approx 17$  panels.



## How many kwh will a solar panel generate

---

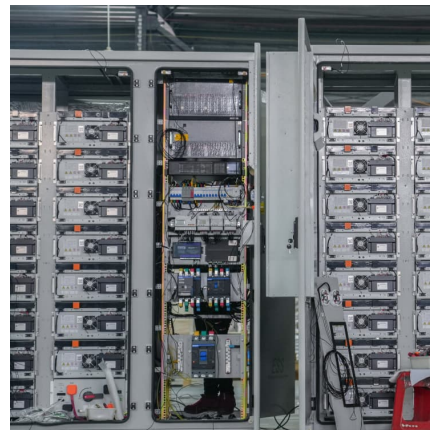


### [How many kWh does a solar panel produce?](#)

Depending on its wattage, an average solar panel may produce anywhere from 25 kWh to 60 kWh per month. To calculate a solar panel's monthly production in kilowatt-hours, multiply its

### [How Much Energy Does A Solar Panel Produce?](#)

On average, a solar panel can output about 400 watts of power under direct sunlight, and produce about 2 kilowatt-hours (kWh) of energy per day. Most homes install around 18 solar panels, ...



### **How to Calculate Daily kWh from Your Solar Panels - EcoVault**

Calculate how many kWh a solar panel produces daily with our easy formula + chart. Learn how panel size and peak sun hours impact energy output in your state.

### **Solar Panels kWh Calculator , Calculate Energy Production**

Calculate how much electricity (kWh) your solar panels will produce based on system size, location, and panel specifications. Estimate daily,



monthly and annual solar energy production.



### [How Many kWh Does A Solar Panel Produce Per Day?](#)

To illustrate how many kWh different solar panel sizes produce per day, we have calculated the kWh output for locations that get 4, 5, or 6 peak sun hours. Here are all the results, gathered in ...

### [How Much Energy Does A Solar Panel Produce? - Renogy US](#)

On average, a typical residential solar panel in the United States produces between 250 to 400 watts of power under ideal conditions, generating roughly 30-40 kWh of energy per month. As ...



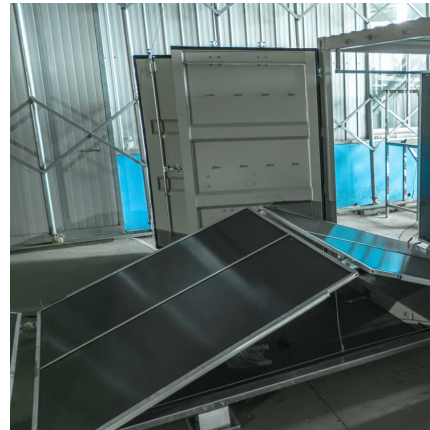
### **Solar Panel Output Calculator , Get Maximum Power Output**

This specific calculator and accompanying guide can help users translate solar panel specifications and local conditions into expected kWh production, offering a hands-on ...



### [How Much Energy Does A Solar Panel Produce?](#)

A 400-watt panel can generate roughly 1.6-2.5 kWh of energy per day, depending on local sunlight. To cover the average U.S. household's 900 kWh/month ...



### [How many kWh does a solar panel produce?](#)

Depending on its wattage, an average solar panel may produce anywhere from 25 kWh to 60 kWh per month. To calculate a solar panel's monthly production in kilowatt ...

### [How Much Energy Does A Solar Panel Produce?](#)

Calculate how many kWh a solar panel produces daily with our easy formula + chart. Learn how panel size and peak sun hours impact energy output in your state.



### [How Much Energy Does A Solar Panel Produce?](#)

A 400-watt panel can generate roughly 1.6-2.5 kWh of energy per day, depending on local sunlight. To cover the average U.S. household's 900 kWh/month consumption, you typically need 12-18 panels. Output depends on ...



### [Solar Panel Output Calculator . Get Maximum Power ...](#)

This specific calculator and accompanying guide can help users translate solar panel specifications and local conditions into expected kWh production, offering a hands-on approach to understanding solar output.



### [How Much Power Does A Solar Panel Produce?](#)

While solar panel systems start at 1 KW and produce between 750 and 850 Kilowatt hour (KwH) annually, larger homes and bigger households typically want to be on the higher end.

## Contact Us

For catalog requests, pricing, or partnerships, please visit:  
<https://conrad.edu.pl>