

# How many kwh solar panel generate





## Overview

---

On average, a solar panel can output about 400 watts of power under direct sunlight, and produce about 2 kilowatt-hours (kWh) of energy per day. Most homes install around 18 solar panels, producing an average of 36 kWh of solar energy daily.

On average, a solar panel can output about 400 watts of power under direct sunlight, and produce about 2 kilowatt-hours (kWh) of energy per day. Most homes install around 18 solar panels, producing an average of 36 kWh of solar energy daily.

In California and Texas, where we have the most solar panels installed, we get 5.38 and 4.92 peak sun hours per day, respectively. Quick outtake from the calculator and chart: For 1 kWh per day, you would need about a 300-watt solar panel. For 10kW per day, you would need about a 3kW solar system.

Solar panel capacity is rated in watts; solar production is measured in watt-hours. Panel wattage is related to potential output over time — e.g., a 400-watt solar panel could potentially generate 400 watt-hours of power in one hour of direct sunlight. 1,000 watts (W) equals one kilowatt (kW), just.

While solar panel systems start at 1 KW and produce between 750 and 850 Kilowatt hour (KwH) annually, larger homes and bigger households typically want to be on the higher end. A four-to-five-person household likely needs a four to five KW system. The roof size and condition, hours of peak sunlight.

On average, a solar panel can output about 400 watts of power under direct sunlight, and produce about 2 kilowatt-hours (kWh) of energy per day. Most homes install around 18 solar panels, producing an average of 36 kWh of solar energy daily. That's enough to cover most, if not all, of a typical.

The Solar Panel Output Calculator is a highly useful tool for anyone looking to understand the total output, production, or power generation from their solar panels per day, month, or year. By inputting your solar panel system's total size and the peak sun hours specific to your location, this.



Most residential panels in 2025 are rated 250–550 watts, with 400-watt models becoming the new standard. A 400-watt panel can generate roughly 1.6–2.5 kWh of energy per day, depending on local sunlight. To cover the average U.S. household's 900 kWh/month consumption, you typically need 12–18. How much energy do solar panels produce?

Two variables dictate how much energy your solar panels produce: 1. Solar Panel Wattage: Higher-wattage panels generate more kWh. Common sizes include 100W (small setups), 300-400W (residential), and 500W+ (commercial systems). Example: A 500W panel produces 50% more energy than a 250W panel under the same conditions. 2. Peak Sun Hours:

How many kWh does a 100 watt solar panel produce?

The calculator will do the calculation for you; just slide the 1st wattage slider to '100' and the 2nd sun irradiance slider to '5.79', and you get the result: A 100-watt solar panel installed in a sunny location (5.79 peak sun hours per day) will produce 0.43 kWh per day.

How many kWh does a 300W solar panel produce a day?

We can see that a 300W solar panel in Texas will produce a little more than 1 kWh every day (1.11 kWh/day, to be exact). We can calculate the daily kW solar panel generation for any panel at any location using this formula. Probably, the most difficult thing is to figure out how much sun you get at your location (in terms of peak sun hours).

How much energy does a 400 watt solar panel produce?

A 400-watt solar panel will produce anywhere from 1.20 to 1.80 kWh per day (at 4-6 peak sun hours locations). The biggest 700-watt solar panel will produce anywhere from 2.10 to 3.15 kWh per day (at 4-6 peak sun hours locations). Let's have a look at solar systems as well:.

How many watts can a solar panel generate per hour?

Example: A 300W solar panel can generate 300 watts of power per hour under optimal conditions. Energy Production: Conversion: The amount of electricity a solar panel generates is measured in kilowatt-hours (kWh), which is the standard unit for electricity consumption.

How much power does a solar system produce a year?



While solar panel systems start at 1 KW and produce between 750 and 850 Kilowatt hour (KwH) annually, larger homes and bigger households typically want to be on the higher end. A four-to-five-person household likely needs a four to five KW system.



## How many kwh solar panel generate

---

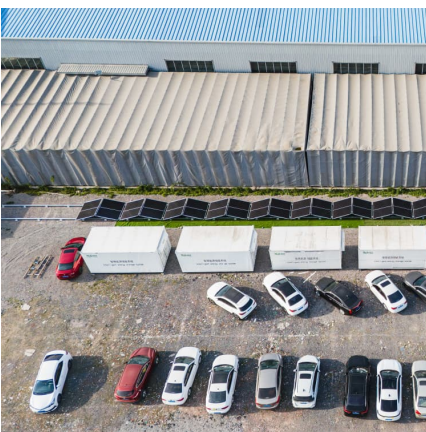
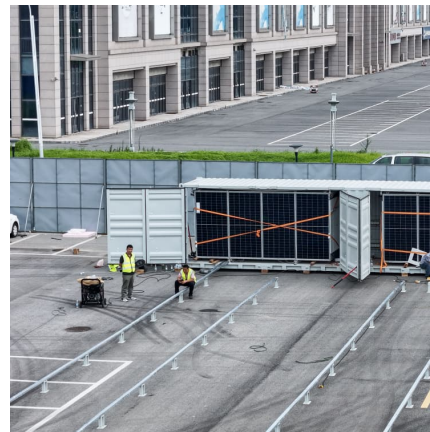


### [How Much Energy Does A Solar Panel Produce?](#)

A 400-watt panel can generate roughly 1.6-2.5 kWh of energy per day, depending on local sunlight. To cover the average U.S. household's 900 kWh/month ...

### [How Many kWh Does A Solar Panel Produce Per Day?](#)

How much kWh does a solar panel produce? The amount of energy generated by any solar panel depends heavily on the irradiance for the panel's location measured in kilowatt ...



### [How many kWh does a solar panel produce?](#)

Want to learn how much power a solar panel produces? We'll break down what you need to know and how to calculate your solar panel's energy production.

### [How Many kWh Does A Solar Panel Produce Per Day?](#)

To illustrate how many kWh different solar panel sizes produce per day, we have calculated the kWh output for locations that get 4, 5, or 6 peak



sun hours. Here are all the results, gathered in ...



### [How Much Energy Does A Solar Panel Produce?](#)

A 400-watt panel can generate roughly 1.6-2.5 kWh of energy per day, depending on local sunlight. To cover the average U.S. household's 900 kWh/month consumption, you typically need 12-18 panels. Output depends on ...

### [How Much Energy Does A Solar Panel Produce?](#)

On average, a solar panel can output about 400 watts of power under direct sunlight, and produce about 2 kilowatt-hours (kWh) of energy per day. Most homes install around 18 solar panels, ...



### [How Many kWh Does A Solar Panel Produce Per Day?](#)

How much kWh does a solar panel produce? The amount of energy generated by any solar panel depends heavily on the irradiance for the panel's location measured in kilowatt-hours per square meter per day ...



### [How Much Power Does A Solar Panel Produce?](#)

On average, a solar panel can output about 400 watts of power under direct sunlight, and produce about 2 kilowatt-hours (kWh) of energy per day. Most homes install around 18 solar panels, producing an average of 36 kWh of solar ...



### [How many kWh does a solar panel produce?](#)

Want to learn how much power a solar panel produces? We'll break down what you need to know and how to calculate your solar panel's energy production.

### [How to Calculate Daily kWh from Your Solar Panels - ...](#)

Calculate how many kWh a solar panel produces daily with our easy formula + chart. Learn how panel size and peak sun hours impact energy output in your state.



### [Solar Panel Output Calculator . Get Maximum Power ...](#)

This specific calculator and accompanying guide can help users translate solar panel specifications and local conditions into expected kWh production, offering a hands-on approach to understanding solar output.



### How to Calculate Daily kWh from Your Solar Panels - EcoVault

Calculate how many kWh a solar panel produces daily with our easy formula + chart. Learn how panel size and peak sun hours impact energy output in your state.



### [How Much Power Does A Solar Panel Produce?](#)

While solar panel systems start at 1 KW and produce between 750 and 850 Kilowatt hour (KwH) annually, larger homes and bigger households typically want to be on the higher end.

### Solar Panels kWh Calculator , Calculate Energy Production

Calculate how much electricity (kWh) your solar panels will produce based on system size, location, and panel specifications. Estimate daily, monthly and annual solar energy production.





### **Solar Panel Output Calculator , Get Maximum Power Output**

This specific calculator and accompanying guide can help users translate solar panel specifications and local conditions into expected kWh production, offering a hands-on ...

## **Contact Us**

---

For catalog requests, pricing, or partnerships, please visit:  
<https://conrad.edu.pl>