

How many kwh should my solar panels generate





Overview

A 400-watt panel can generate roughly 1.6–2.5 kWh of energy per day, depending on local sunlight. To cover the average U.S. household's 900 kWh/month consumption, you typically need 12–18 panels. Output depends on sun hours, roof direction, panel technology, shading, temperature and.

A 400-watt panel can generate roughly 1.6–2.5 kWh of energy per day, depending on local sunlight. To cover the average U.S. household's 900 kWh/month consumption, you typically need 12–18 panels. Output depends on sun hours, roof direction, panel technology, shading, temperature and.

Most common solar panel sizes include 100-watt, 300-watt, and 400-watt solar panels, for example. The biggest the rated wattage of a solar panel, the more kWh per day it will produce. How Much Sun Do You Get (Peak Sun Hours). Obviously, the more sun you get, the more kWh a solar panel will produce.

By inputting your solar panel system's total size and the peak sun hours specific to your location, this calculator simplifies the complex process of estimating the energy your solar panels can generate. Total Solar Panel Size (W): ?

Panel Type: ?

Monocrystalline (15% Efficiency) Polycrystalline.

Estimate how much electricity your solar panels will produce in kilowatt-hours (kWh) based on system specifications and location. DOKIO 400 Watt Solar Panels 10BB 12/24 Volt Solar Panel kit High Efficiency for Rooftop Portable Power Station Farm Yacht RV Camping and Other Off-Grid.

Using a few basic pieces of information, however, it's fairly easy to come up with a decent estimate of how many kilowatt-hours your solar panels can produce each day. Before we get into the nitty-gritty details, here are three very important principles to keep in mind when finding the number of.

Use this solar panel output calculator to find out the total output, production,



or power generation from your solar panels per day, month, or in year. Also, I'm gonna share some tips to get the maximum power output from your solar panel. And the factors which will affect the output. Note: Divide.

Two variables dictate how much energy your solar panels produce: 1. Solar Panel Wattage: Higher-wattage panels generate more kWh. Common sizes include 100W (small setups), 300-400W (residential), and 500W+ (commercial systems). Example: A 500W panel produces 50% more energy than a 250W panel under. How many kWh does a solar panel produce?

Consider a solar panel with a power output of 300 watts and six hours of direct sunlight per day. The formula is as follows: $300W \times 6 = 1800$ watt-hours or 1.8 kWh. Using this solar power calculator kWh formula, you can determine energy production on a weekly, monthly, or yearly basis by multiplying the daily watt-hours by the respective periods.

How many kWh does a 300W solar panel produce a day?

We can see that a 300W solar panel in Texas will produce a little more than 1 kWh every day (1.11 kWh/day, to be exact). We can calculate the daily kW solar panel generation for any panel at any location using this formula. Probably, the most difficult thing is to figure out how much sun you get at your location (in terms of peak sun hours).

How many watts can a solar panel generate per hour?

Example: A 300W solar panel can generate 300 watts of power per hour under optimal conditions. Energy Production: Conversion: The amount of electricity a solar panel generates is measured in kilowatt-hours (kWh), which is the standard unit for electricity consumption.

How many kWh does a 100 watt solar panel produce?

The calculator will do the calculation for you; just slide the 1st wattage slider to '100' and the 2nd sun irradiance slider to '5.79', and you get the result: A 100-watt solar panel installed in a sunny location (5.79 peak sun hours per day) will produce 0.43 kWh per day.

How much electricity does a 1 kilowatt solar system produce?

A 1 kilowatt (1 kW) solar panel system may produce roughly 850 kWh of electricity per year. However, the actual amount of electricity produced is determined by a variety of factors such as roof size and condition, peak solar



exposure hours, and the number of panels.

How many solar panels do you need per day?

In California and Texas, where we have the most solar panels installed, we get 5.38 and 4.92 peak sun hours per day, respectively. Quick outtake from the calculator and chart: For 1 kWh per day, you would need about a 300-watt solar panel. For 10kW per day, you would need about a 3kW solar system.



How many kwh should my solar panels generate



[How Much Energy Does A Solar Panel Produce?](#)

A 400-watt panel can generate roughly 1.6-2.5 kWh of energy per day, depending on local sunlight. To cover the average U.S. household's 900 kWh/month ...

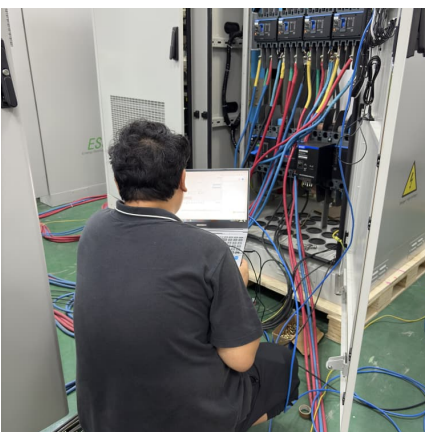
[How Much Energy Does A Solar Panel Produce?](#)

On average, a solar panel can output about 400 watts of power under direct sunlight, and produce about 2 kilowatt-hours (kWh) of energy per day. Most homes install around 18 solar panels, producing an average of 36 kWh of solar ...



[How Much Energy Does A Solar Panel Produce?](#)

On average, a solar panel can output about 400 watts of power under direct sunlight, and produce about 2 kilowatt-hours (kWh) of energy per day. Most homes install around 18 solar panels, ...



[Solar Panel Output Calculator , Get Maximum Power ...](#)

Use Solar Panel Output Calculator to find out the total output, production, or power generation from your solar panels per day, month, or in



year.



Solar Panel Output Calculator

Use this solar panel output calculator to find out the total output, production, or power generation from your solar panels per day, month, or in year. Also, I'm gonna share ...

How to Calculate Solar Panel kWh

Using this solar power calculator kWh formula, you can determine energy production on a weekly, monthly, or yearly basis by multiplying the daily watt-hours by the respective periods.



[How Many kWh Does A Solar Panel Produce Per Day?](#)

To illustrate how many kWh different solar panel sizes produce per day, we have calculated the kWh output for locations that get 4, 5, or 6 peak sun hours. Here are all the results, gathered in ...



How to Calculate Solar Panel kWh

Using this solar power calculator kWh formula, you can determine energy production on a weekly, monthly, or yearly basis by multiplying the daily watt-hours by the ...

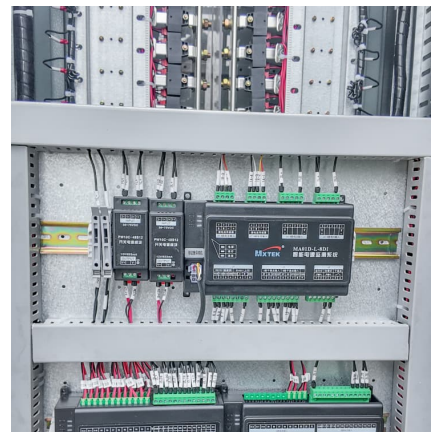


[How many kWh does a solar panel produce?](#)

Want to learn how much power a solar panel produces? We'll break down what you need to know and how to calculate your solar panel's energy production.

[How many kWh does a solar panel produce?](#)

Want to learn how much power a solar panel produces? We'll break down what you need to know and how to calculate your solar panel's energy production.



Solar Panel Output Calculator , Get Maximum Power Output

Use Solar Panel Output Calculator to find out the total output, production, or power generation from your solar panels per day, month, or in year.



[How to Calculate Daily kWh from Your Solar Panels - ...](#)

Calculate how many kWh a solar panel produces daily with our easy formula + chart. Learn how panel size and peak sun hours impact energy output in your state.



Solar Panels kWh Calculator , Calculate Energy Production

Calculate how much electricity (kWh) your solar panels will produce based on system size, location, and panel specifications. Estimate daily, monthly and annual solar energy production.



[How Much Energy Does A Solar Panel Produce?](#)

A 400-watt panel can generate roughly 1.6-2.5 kWh of energy per day, depending on local sunlight. To cover the average U.S. household's 900 kWh/month consumption, you typically need 12-18 panels. Output depends on ...





How to Calculate Daily kWh from Your Solar Panels - EcoVault

Calculate how many kWh a solar panel produces daily with our easy formula + chart. Learn how panel size and peak sun hours impact energy output in your state.

Contact Us

For catalog requests, pricing, or partnerships, please visit:
<https://conrad.edu.pl>