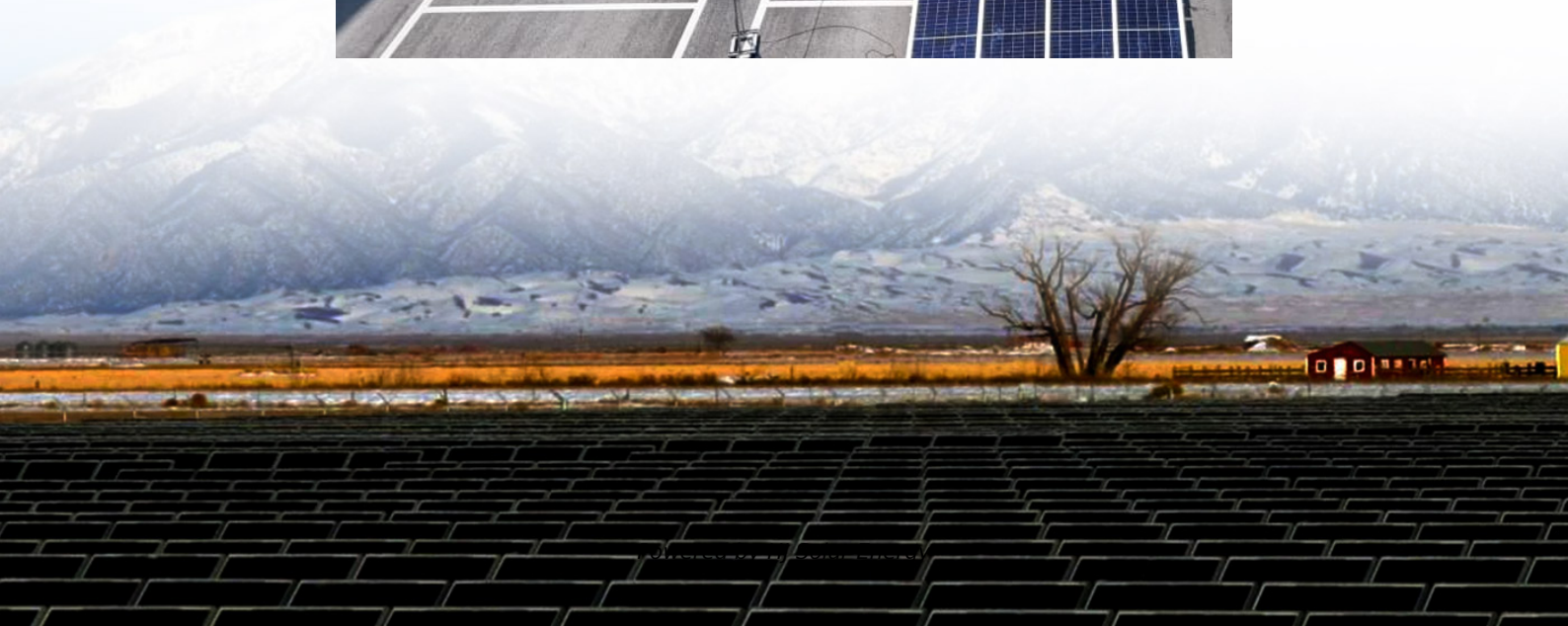


# How long does the tag heuer carrera have a power reserve





## Overview

---

Made in-house by TAG Heuer, this advanced automatic chronograph operates at 4Hz with 80 hours of power reserve. It features the time and date, and has a 12-hour three-register chronograph layout. You can view the movement through the sapphire crystal window on the back of the watch.

Made in-house by TAG Heuer, this advanced automatic chronograph operates at 4Hz with 80 hours of power reserve. It features the time and date, and has a 12-hour three-register chronograph layout. You can view the movement through the sapphire crystal window on the back of the watch.

TAG Heuer automatic movements have a power reserve of about 42 - 48 hours depending on the model. As it is the action of the wearer's wrist that winds up the movement and maintains maximum power, the power reserve will begin to drain if there is not enough movement, causing the watch to stop. You.

I've had a Tag Heuer Formula 1, Calibre 6 automatic for a couple of months now and am noticing somewhat inconsistent power reserve. Latest example: Fully wound watch around 11:00 am Wednesday (65 FULL crown winds). Wore watch until 4:30 pm (5.5 hours). On Thursday, wore watch from 8:00 am to 4:30.

The following list shows TAG Heuer average tolerance given by the Swiss movement suppliers (based on normal conditions, and full power reserve for automatics): A TAG Heuer watchmaker can carry out a maintenance service to adjust the timing rate of an automatic movement if it is performing outside.

Made in-house by TAG Heuer, this advanced automatic chronograph operates at 4Hz with 80 hours of power reserve. It features the time and date, and has a 12-hour three-register chronograph layout. You can view the movement through the sapphire crystal window on the back of the watch. The most.

The power reserve is not holding power. After I wind it (clockwise only), all hands will stop before 24 hours. The watch is supposed to reserve power for up to 80 hours. I assume that I'm reaching the resistance point when I wind it



because it will creep counterclockwise after 20-30 turns. I do not.

The Monaco TH-Carbonspring measures 39mm and houses the Caliber TH20-60 automatic flyback chronograph movement, COSC-certified with an 80-hour power reserve. Its black-gold hands, Super-LumiNova indices, and black rubber strap provide legibility and comfort. Elsewhere, the 44mm Carrera. What is the power reserve of a TAG Heuer watch?

The power reserve of a TAG Heuer automatic movement is about 42 – 48 hours, depending on the model.

How long does a TAG Heuer watch last?

TAG Heuer automatic movements have a power reserve of about 42 – 48 hours depending on the model. The power reserve will begin to drain if there is not enough movement from the wearer's wrist, causing the watch to stop.

How long does a TAG Heuer automatic movement last without being wound?

TAG Heuer automatic movements have a power reserve of about 42 – 48 hours depending on the model. The power reserve is the amount of power a watch accumulates in order to keep the watch or chronograph functioning without being wound.

What causes a TAG Heuer watch to stop?

The power reserve of a TAG Heuer automatic movement will begin to drain if there is not enough movement, causing the watch to stop. This is because the action of the wearer's wrist is what winds up the movement and maintains maximum power.

How often should a TAG Heuer V4 be wound?

For watches with a shorter power reserve, this may mean winding daily, while watches with a longer power reserve may only need to be wound every few days. The TAG Heuer V4, with its unique belt-driven mechanism, requires a slightly different approach to power reserve management.

How many rotations a day should a TAG Heuer have?

For TAG Heuer Aquaracer models, 20-30 rotations per day are sufficient to maintain a 38-hour power reserve. For TAG Heuer Formula 1 models, 25-35 rotations per day are recommended to maintain a 40-hour power reserve. If



you have a watch winder, it's essential to set it correctly to ensure your TAG Heuer receives the right amount of winding.



## How long does the tag heuer carrera have a power reserve

---



### [Tag Heuer Battery Chart , Battery Tools](#)

How long does TAG Heuer battery last? The lifespan of a TAG Heuer battery depends on various factors like the type of battery, the frequency of use, and ...

### Tag Carrera Automatic

Don't get too caught up on number of crown rotations; if you're going to test the power reserve, wind it until you can hear the spring slip. It's a little hard to describe what it ...



### TAG Heuer Carrera Calibre 16 Review

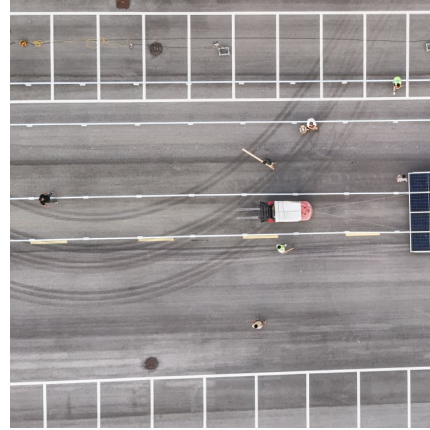
The TAG Heuer Carrera Calibre 16 collection offers a wide range of styles, loved by collectors for their mix of sporty, handsome design and affordability.

### Are Tag Heuer Watches Battery Powered? Quartz Vs. Automatic ...

For example, the Tag Heuer Carrera series includes both quartz and automatic models, showcasing the brand's versatility. The benefits



of battery-powered quartz watches ...



### Difference etween calibre 5, 7, and 16

TAG Heuer Caliber 16 is an automatic chronograph movement based on the valjoux 7750., is the one available on the carrera and the other chronos by tag. Caliber 6 is ...

### **TAG Heuer's TH-Carbonspring watches are Just The Beginning**

11 ????· Its black-gold hands, Super-LumiNova indices, and black rubber strap provide legibility and comfort. Elsewhere, the 44mm Carrera TH-Carbonspring features a flying ...



### **Is The Tag Heuer Carrera A Good Investment In 2025? (Price**

How much does a TAG Heuer Carrera cost in 2025? Retail prices in 2025 range from \$3,900 for standard three-hand models to \$8,000 for chronographs, and up to \$65,000+ ...



### How to Wind Your TAG Heuer Watch

For example, the TAG Heuer Aquaracer Calibre 5 has a power reserve of around 38 hours, while the TAG Heuer Carrera Calibre Heuer 01 has a power reserve of up to 80 hours.



### [Tag Heuer Battery Chart , Battery Tools](#)

How long does TAG Heuer battery last? The lifespan of a TAG Heuer battery depends on various factors like the type of battery, the frequency of use, and the features of the watch. On ...

### [TAG Heuer Monaco and Carrera debut innovative TH...](#)

TAG Heuer introduces two new limited-edition models equipped with the TH-Carbonspring oscillator, a development that builds on the brand's decade-long research into ...



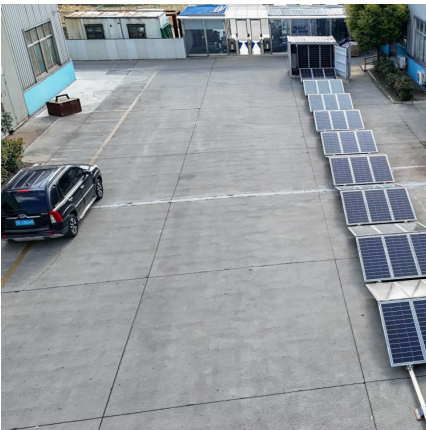
### [The story of TAG Heuer's Solargraph Technology](#)

TAG Heuer, renowned for its avant-garde spirit, has once again pushed the boundaries of what's possible in horology. The heart of the Aquaracer Solargraph lies in its ...



How often should I wind my TAG Heuer watch?

Automatic watch: As it is the action of the wearer's wrist that wind the movement and maintain maximum power, the power reserve will begin to drain if there is not enough movement, ...



8 Common Problems With Automatic & Mechanical Watch

Not to mention most watches don't have power reserve indicator which can be a huge help in telling the power reserve capacity at any moment. In fact, most experience owners state that the remaining power reserve of the watch is about 2 or 3 times the last duration we ...

Watch Review: TAG Heuer Carrera Chronograph 44mm Steel

Made in-house by TAG Heuer, this advanced automatic chronograph operates at 4Hz with 80 hours of power reserve. It features the time and date, and has a 12-hour three ...





### **Are TAG Watches Battery Operated?**

How long does the battery in a TAG Heuer quartz watch last? The battery in a TAG Heuer quartz watch typically lasts between 1 to 3 years, depending on the specific model ...

### **[Tag Heuer] Carrera 42 Defective? Short Power Reserve Time**

The watch is supposed to reserve power for up to 80 hours. I assume that I'm reaching the resistance point when I wind it because it will creep counterclockwise after 20-30 turns.



### **TAG Heuer Calibre 16 Watch Movement**

Brand TAG Heuer Caliber Number 16 In-House? No Base Caliber ETA/Valjoux 7750 (or Sellita SW500) Movement Type Automatic, self-winding mechanical, chronograph Jewels 25 Lignes ...

### [Taking care of your watch , TAG Heuer](#)

Most of our watches provide enough power to keep your watch running for 1 to 2 days, without being worn. If the watch has stopped, rotate the crown clockwise ...



### **TAG Heuer Carrera Chronograph**

Equipped with our in-house Calibre Heuer 02 movement offering 80 hours of power reserve, this TAG Heuer Carrera blends high-end timekeeping accuracy with superior performance.



### **Testing power reserve**

Is there a good way to test the power reserve of my new Carrera calibre 5 ? I don't wear the watch to work since my current work really requires a beater watch, but when I ...



## **Contact Us**

For catalog requests, pricing, or partnerships, please visit:  
<https://conrad.edu.pl>