

# How fast can a flywheel energy storage rotate





## Overview

---

Advanced FES systems have rotors made of high strength carbon-fiber composites, suspended by magnetic bearings, and spinning at speeds from 20,000 to over 50,000 rpm in a vacuum enclosure. [2] Such flywheels can come up to speed in a matter of minutes - reaching their energy capacity much more quickly.

Flywheel energy storage (FES) works by accelerating a rotor ( ) to a very high speed and maintaining the energy in the system as . When energy is extracted from the system, the flywheel's rotational.

A typical system consists of a flywheel supported by connected to a . The flywheel and sometimes.

TransportationAutomotiveIn the 1950s, flywheel-powered buses, known as .

- • • - Form of power supply
- - High-capacity electrochemical capacitor .

GeneralCompared with other ways to store electricity, FES systems have long lifetimes (lasting decades.

Flywheels are not as adversely affected by temperature changes, can operate at a much wider temperature range, and are not subject to many of the common failures of chemical . They are also less potentially damaging to the environment, being.

- Beacon Power Applies for DOE Grants to Fund up to 50% of Two 20 MW Energy Storage Plants, Sep. 1, 2009
- Sheahen.

High-speed flywheels- made from composite materials like carbon fiber and fiberglass, typically operate at speeds between 20,000 and 60,000 revolutions per minute (RPM) and can store energy for a few seconds to a few minutes.

High-speed flywheels- made from composite materials like carbon fiber and fiberglass, typically operate at speeds between 20,000 and 60,000 revolutions per minute (RPM) and can store energy for a few seconds to a few minutes.

Flywheel energy storage (FES) works by accelerating a rotor (flywheel) to a



very high speed and maintaining the energy in the system as rotational energy. When energy is extracted from the system, the flywheel's rotational speed is reduced as a consequence of the principle of conservation of.

High-speed flywheels- made from composite materials like carbon fiber and fiberglass, typically operate at speeds between 20,000 and 60,000 revolutions per minute (RPM) and can store energy for a few seconds to a few minutes. They are commonly used for short-term energy storage applications such as.

stores rotational kinetic energy. Benefits: Fast response time; High power capability; Challenges: Low energy capacity; High self discharge rates; Technology Variations: Applications: Power quality, frequency regulation, wind generation stabilization; high energy flywheels are being nal.

Flywheel energy storage (FES) works by accelerating a rotor (flywheel) to a very high speed and maintaining the energy in the system as rotational energy. When energy is extracted from the system, the flywheel's rotational speed is reduced as a consequence of the principle of conservation of.

Flywheels store energy through the process of rotational kinetic energy accumulation. 1. When a flywheel spins, it converts electrical energy into mechanical energy, which can be harnessed during need. 2. Flywheels achieve this via potential energy, which increases as the wheel's rotational speed.

A flywheel energy storage system is a mechanical device used to store energy through rotational motion. When excess electricity is available, it is used to accelerate a flywheel to a very high speed. The energy is stored as kinetic energy and can be retrieved by slowing down the flywheel. How does Flywheel energy storage work?

Flywheel energy storage (FES) works by accelerating a rotor (flywheel) to a very high speed and maintaining the energy in the system as rotational energy.

How does a flywheel work?

Here's a breakdown of the process: Energy Absorption: When there's surplus electricity, such as when the grid is overproducing energy, the system uses that excess power to accelerate the flywheel. This energy is stored as kinetic energy, much like how the figure skater speeds up their spin by pulling in their arms.



What is flywheel technology?

Flywheel technology is a method of energy storage that uses the principles of rotational kinetic energy. A flywheel is a mechanical device that stores energy by spinning a rotor at very high speeds.

What is the difference between a flywheel and a battery storage system?

Flywheel Systems are more suited for applications that require rapid energy bursts, such as power grid stabilization, frequency regulation, and backup power for critical infrastructure. Battery Storage is typically a better choice for long-term energy storage, such as for renewable energy systems (solar or wind) or home energy storage.

How does a flywheel store energy?

A flywheel stores energy by rotating a mass, or rotor, about a fixed axis. The energy stored in the flywheel rises when the angular speed of the rotor is increased and reduces when it is slowed down. The maximum energy is usually limited by the maximum angular speed, itself limited by structural considerations.

What is a Flywheel Energy Storage System (FESS)?

A Flywheel Energy Storage System (FESS) is defined as a system that stores energy for a distinct period of time to be retrieved later. There is a class distinction between flywheels used for smoothing the intermittent output of an engine or load on a machine and these energy storage systems.



## How fast can a flywheel energy storage rotate

---

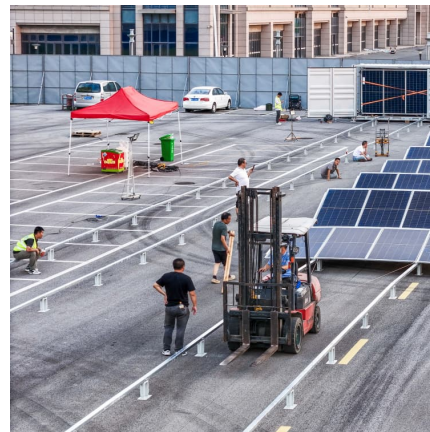


### [High-performance flywheels for energy storage](#)

One motor is specially designed as a high-velocity flywheel for reliable, fast-response energy storage--a function--a function that will become increasingly important ...

### [Flywheels , Climate Technology Centre & Network](#)

Components of a flywheel energy storage system  
A flywheel has several critical components. a)  
Rotor - a spinning mass that stores energy in the form of ...



### **What is a flywheel?**

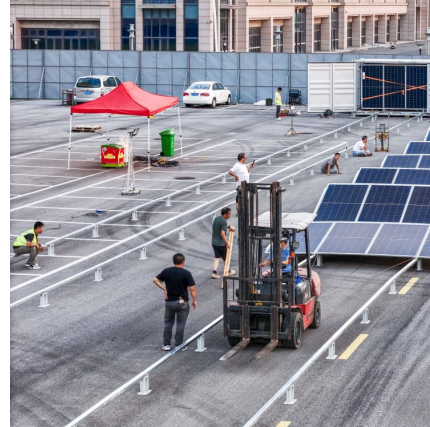
A flywheel is a mechanical device that stores rotational energy. It's essentially a heavy wheel designed to resist changes in its rotational speed, making it useful for smoothing out power ...

### **Flywheel Energy Calculator**

What is Flywheel Energy? Flywheel energy refers to the kinetic energy stored in a rotating flywheel. Flywheels are heavy rotating discs or wheels designed to store mechanical energy by



...



How long can the flywheel energy storage rotate

The Torus Flywheel uses electricity from the grid or a renewable energy source, like solar panels or wind turbines, to spin a heavy metal disc using its motor-generator, storing kinetic energy.

...

**Flywheels , Climate Technology Centre & Network , Tue, 11/08/2016**

Components of a flywheel energy storage system  
A flywheel has several critical components. a) Rotor - a spinning mass that stores energy in the form of momentum (EPRI, 2002) The rotor, ...



**Flywheels**

The force on a flywheel increases with speed, and the energy a wheel can store is limited by the strength of the material from which it's made: spin a flywheel too fast and you'll eventually ...



### [Flywheel Energy Storage System: What Is It and How ...](#)

In a flywheel energy storage system, electrical energy is used to spin a flywheel at incredibly high speeds. The flywheel, made of durable materials like composite ...



### [How does flywheel energy storage work?](#)

In a renewable energy setup, such as a solar or wind farm, the flywheel can store the energy generated when the sun is shining or the wind is blowing, even if there is no ...

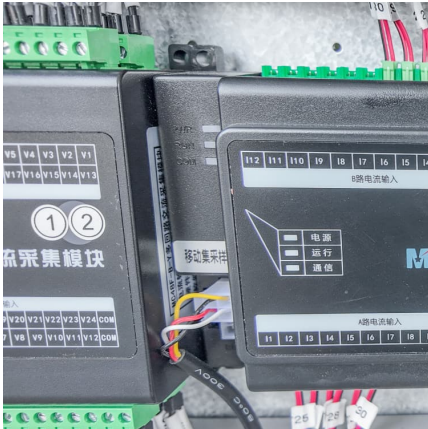
### [Flywheel Storage Systems , SpringerLink](#)

The components of a flywheel energy storage systems are shown schematically in Fig. 5.4. The main component is a rotating mass that is held via magnetic ...



### [Flywheel Energy Storage: The Key To Sustainable ...](#)

Flywheel energy storage is a promising technology that can provide fast response times to changes in power demand, with longer lifespan and higher efficiency ...



### Flywheel Energy Storage

This results in the storage of kinetic energy. When energy is required, the motor functions as a generator, because the flywheel transfers rotational energy to it. This is converted back into ...



### Flywheels

The kinetic energy stored in flywheels - the moment of inertia. A flywheel can be used to smooth energy fluctuations and make the energy flow intermittent operating machine more uniform. ...

### Flywheel Energy Storage Systems (FESS)

Flywheel energy storage systems (FESS) use electric energy input which is stored in the form of kinetic energy. Kinetic energy can be described as "energy of motion," in this case the motion ...



### Physics: energy stored in rotating masses?



This data-file calculates the energy stored in rotating masses. This includes 50Wh - 100 kWh flywheels. In power grids, the angular momentum of large rotating ...

Mechanical Theory : Flywheel working principle

A flywheel energy storage system or "flywheel battery" is a mechanical battery that stores energy kinetically in the form of a rotating mass, ...



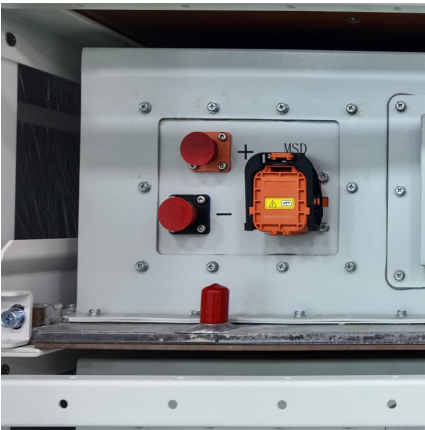
**Flywheel energy storage**

When energy is extracted from the system, the flywheel's rotational speed is reduced as a consequence of the principle of conservation of energy; adding energy to the system ...

**How long can the flywheel of flywheel energy storage rotate**

A flywheel energy storage can have energy fed in the rotational mass of a flywheel, store it as kinetic energy, and release out upon demand. They work by spinning up a heavy disk or rotor ...





### Reworking the Flywheel for Better Energy Storage

Energy is all around us - it can be harvested from sources such as wind, sun and moving water - but it's still difficult to store effectively. ...

### **Flywheel energy storage**

In order to speed up the rotor, a torque must be applied in the direction of rotation, to slow it down; the torque acts in the reverse direction. On one level, flywheel storage is very ...



### **Flywheel energy storage**

Flywheel energy storage (FES) works by accelerating a rotor (flywheel) to a very high speed and maintaining the energy in the system as rotational energy. When energy is extracted from the ...



### **State switch control of magnetically suspended flywheel energy storage**

The magnetically suspended flywheel energy storage system (MS-FESS) is an energy storage equipment that accomplishes the bidirectional transfer between electric energy ...



### [Flywheel Energy Storage Systems , Electricity ...](#)

A flywheel is a mechanical device that stores energy by spinning a rotor at very high speeds. The basic concept involves converting electrical energy into ...



### **How flywheel energy storage works**

principle of rotating mass causes energy to store in a flywheel by converting electrical energy into mechanical energy in the form of rotational kinetic energy. 39 The energy fed to an FESS is ...



### [Chapter 4 Flywheel Energy Storage System](#)

Flywheel energy storage stores energy in the form of mechanical energy in a high-speed rotating rotor. The core technology is the rotor material, support bearing, and electromechanical control ...





### [The role of flywheel energy storage in decarbonised ...](#)

A flywheel is a very simple device, storing energy in rotational momentum which can be operated as an electrical storage by incorporating a direct drive motor ...



### [FESS Fkywheel Energy Storage Systems](#)

The rate at which energy can be stored or discharged from a flywheel energy storage system depends on the design of the system, including the mass and ...

### [Flywheel Energy Storage System: What Is It and How ...](#)

In essence, a flywheel stores and releases energy just like a figure skater harnessing and controlling their spinning momentum, offering fast, efficient, ...



## Contact Us

For catalog requests, pricing, or partnerships, please visit:  
<https://conrad.edu.pl>