

Grid connection process of energy storage power station





Overview

Unlike traditional power plants, which generate energy in real-time, energy storage systems operate by storing excess energy generated during low demand periods and releasing it during peak demand.

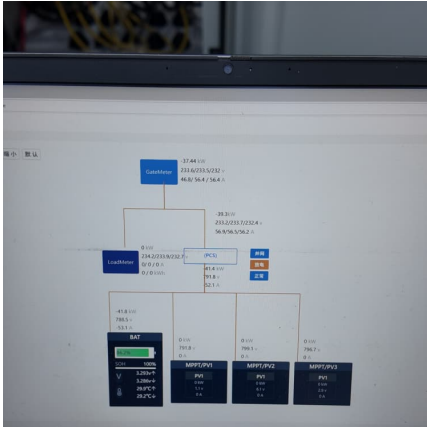
Unlike traditional power plants, which generate energy in real-time, energy storage systems operate by storing excess energy generated during low demand periods and releasing it during peak demand.

Energy storage power stations connect to the power grid through a structured integration process, including several critical components, 2. The primary methodology is treated with grid synchronization and interfacing technologies, 3. These systems serve as essential assets for managing energy.

Let's be real - navigating energy storage system grid connection procedures can feel like assembling IKEA furniture without the picture manual. But here's why it matters: 82% of failed renewable energy projects stumble at the grid integration stage, according to 2024 DOE reports. This guide is your.



Grid connection process of energy storage power station



National Energy Administration: Clarify grid connection ...

Grid enterprises and power dispatching agencies must formulate detailed grid connection rules for new energy storage power stations and grid connection service work guidelines, and clarify the ...

Energy Storage Power Station Construction Guide: Key Steps ...

Choosing where to build your energy storage power station isn't like picking a Starbucks location. Get this wrong, and you might as well be building a sandcastle during high tide.



[Handbook on Battery Energy Storage System](#)

One energy storage technology in particular, the battery energy storage system (BESS), is studied in greater detail together with the various components required for grid-scale operation.

Energy Storage: An Overview of PV+BESS, its Architecture, ...

Battery energy storage can be connected to new and existing solar via DC coupling Battery energy storage connects to DC-DC converter. DC-DC



converter and solar are ...



Compressed Air Energy Storage and Grid Connection: The ...

Well, that's essentially how compressed air energy storage (CAES) works--and it's becoming a game-changer for modern power grids. As renewable energy adoption ...



Energy storage unit grid connection

Grid-scale storage refers to technologies connected to the power grid that can store energy and then supply it back to the grid at a more advantageous time - for example, at night, when no ...



Energy Storage Power Station Grid Connection: Procedures, ...

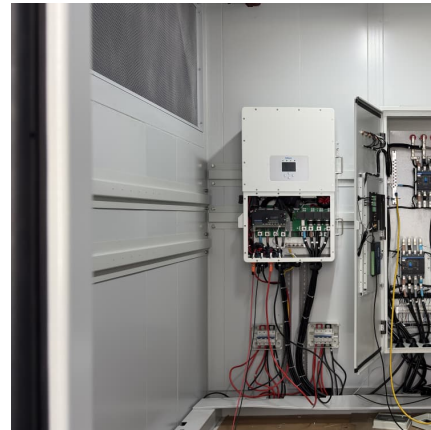
With the global energy storage market hitting \$33 billion in 2024 [1], getting these systems grid-ready has become both an engineering imperative and regulatory tightrope walk. Let's unpack ...





Detailed explanation of the development process of energy storage power

In the critical period of energy transformation today, the construction of energy storage power stations has become a key link in promoting sustainable energy development. Whether dealing ...

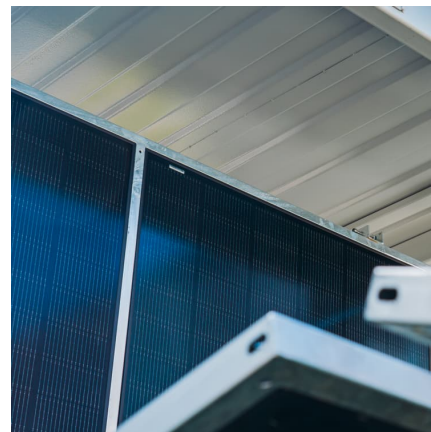


Jiangsu: Pylontech Assists in Successful Grid Connection of ...

Source: Pylontech On June 30, the Jiangsu Huadian Yizheng Wind-Solar Integrated Energy Storage Project was successfully connected to the grid. As the largest grid ...

Energy Storage System Grid Connection Procedures: A Step-by ...

Let's be real - navigating energy storage system grid connection procedures can feel like assembling IKEA furniture without the picture manual. But here's why it matters: ...



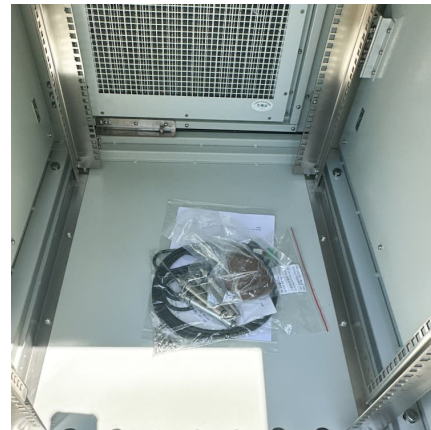
Energy Storage Power Stations: The Backbone of a Sustainable Grid

Imagine your smartphone battery deciding when to charge itself during off-peak hours and automatically sharing power with your neighbor's phone during emergencies. That's ...



Grid connection sequence of energy storage power station

Can large-scale energy storage be used in a new power system? With the large-scale integration of renewable energy into the grid, its randomness and intermittent characteristics will adversely ...



Understanding Voltage in Energy Storage Power Stations: A ...

Why Voltage Matters in Energy Storage Systems
Ever wondered why energy storage power stations often use 10kV voltage for grid connection? It's like choosing the right gear for your car ...

[7.6GW of UK battery energy storage systems to get ...](#)

Industry experts note that improving the grid connection process has long been a hurdle for energy storage deployment, with congestion and ...



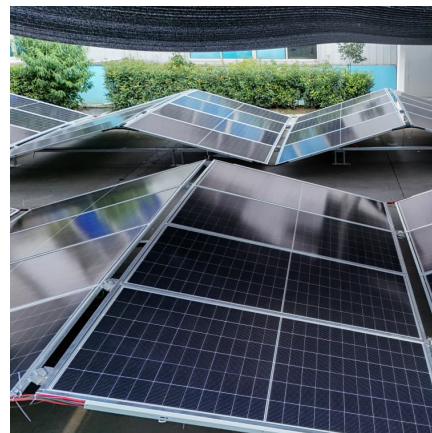


[Utility-scale battery energy storage system \(BESS\)](#)

Introduction Reference Architecture for utility-scale battery energy storage system (BESS) This documentation provides a Reference Architecture for power distribution and conversion - and ...

Energy Storage Interconnection

7.1 Abstract: Energy storage is expected to play an increasingly important role in the evolution of the power grid particularly to accommodate increasing penetration of intermittent renewable ...



[What are the components of an energy storage power ...](#)

The next crucial component of an energy storage power station involves grid connection infrastructure, which serves as the link between the ...

[MISO Accelerates Power Plant Grid Connection Process](#)

North American power grid operator, MISO, will speed up the process for new power plants to connect to the grid after U.S. federal regulators approved the plan. The move comes as ...



China's Largest Electrochemical Energy Storage Power Station ...

The National Energy Group's Largest Electrochemical Energy Storage Station Achieves Full Capacity Grid Connection On May 15, 2025, the National Energy Group's largest ...



Grid-Forming Battery Energy Storage Systems

The electricity sector continues to undergo a rapid transformation toward increasing levels of renew-able energy resources--wind, solar photovoltaic, and battery energy storage systems ...



Connecting to the Grid: Requirements for Renewable Energy ...

8. Conclusion Grid connection is a critical aspect of renewable energy projects, enabling the efficient utilization of clean energy resources. Meeting technical requirements, ...

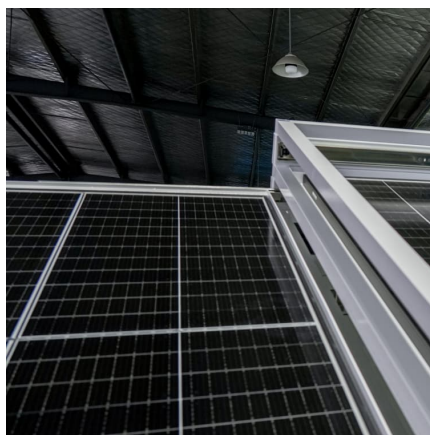




Standard Battery Energy Storage System (BESS)

...

Introduction battery energy storage system (BESS) can be operated in a number of different ways to provide benefit to a customer. Some customers are using a BESS to reduce their overall ...



Home energy storage grid-connected power station ...

Battery storage power stations are usually composed of batteries, power conversion systems (inverters), control systems and monitoring equipment. There are a variety of battery types ...

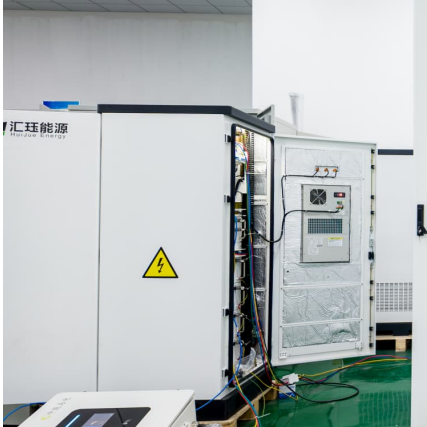
Connecting a Facility including generation and/or storage

Of a new generation or storage unit or facility 2 with an installed power of over 0.8 kW at a consumption, generation and/or storage facility: For which a connection request (named ...



Grid connection barriers to renewable energy deployment in the ...

Active grid connection requests are more than double the total installed capacity of the US power plant fleet (2,600 vs. 1,280 GW). The time required to secure a connection ...



How is the energy storage power station connected to the grid?

1. The energy storage power station is interconnected through multiple systems, 2. primarily utilizing power electronic converters, 3. facilitating bidirectional power flow, 4. ...



Grid connection permit process , Clean energy for EU islands

The Federal authority for maritime navigation designates the grid connection points and permits as foreseen in the site development plant (§44 WindSeeG 2020). The Federal Grid Agency ...

[World's largest grid-forming energy storage project ...](#)

The project is the largest of its kind in the global lithium iron phosphate battery storage sector, setting a benchmark for grid-forming energy ...





[What does an energy storage power station consist of?](#)

An energy storage power station is primarily composed of the following essential components:

1. Energy storage technology employed, 2.
- Power management systems, 3. ...

Contact Us

For catalog requests, pricing, or partnerships, please visit:
<https://conrad.edu.pl>