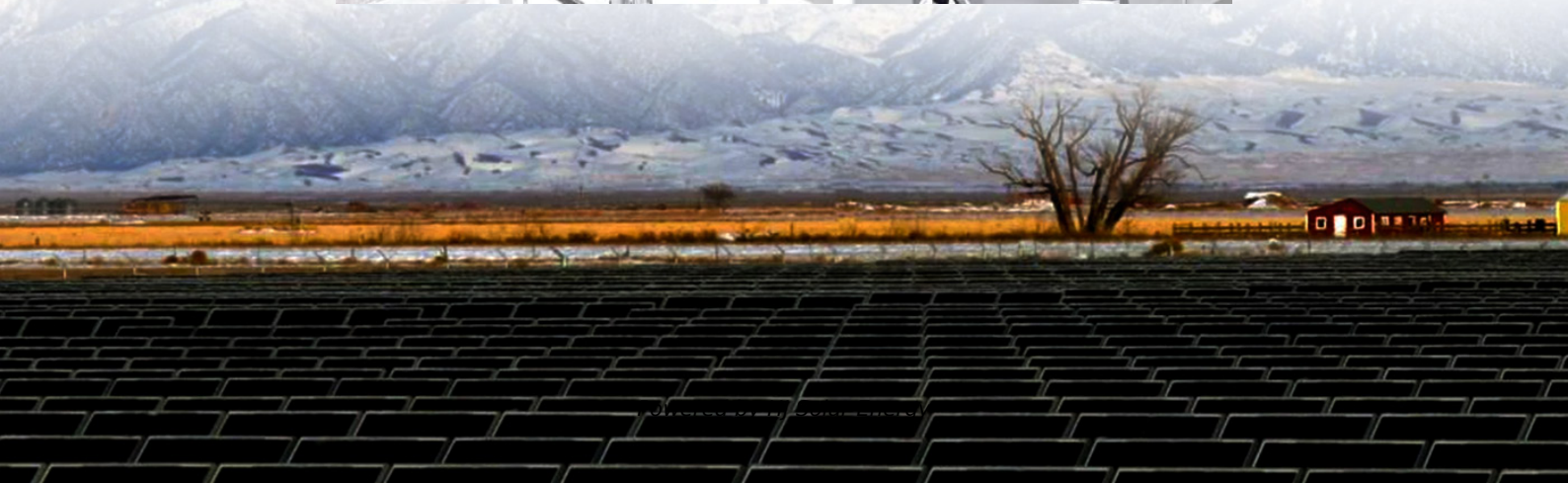


# Enterprise ESS system cost vs benefit calculation in Bangladesh





## Overview

---

How to draft an employee compensation & benefits in Bangladesh?

Draft an employee compensation and benefits in Bangladesh based on the data collected. Keep in mind the allocated budget, logistics, and outsourcing expenses. Employee benefits in Bangladesh must include the statutory benefits mentioned in the Bangladesh Labor Act. The guaranteed employee benefits in Bangladesh are:.

What are the employee benefits in Bangladesh?

Employee benefits in Bangladesh must include the statutory benefits mentioned in the Bangladesh Labor Act. The guaranteed employee benefits in Bangladesh are: All workers are entitled to 10 days of paid casual leaves each calendar year. All workers can claim paid sick leaves for 14 days in a calendar year.

What are the rules governing employee compensation in Bangladesh?

The following rules govern employee compensation in Bangladesh: The Labor Act 2006 stipulates a Wages Board that recommends minimum remuneration for all classes of employees. The Labor Law was amended in January 2019, and the new amendments provide financial benefits to expecting mothers after delivery.

Are employee benefits taxable in Bangladesh?

Most remunerations and benefits provided to the employees are fully taxable except for medical allowance. Here are some critical points about taxation on employee benefits in Bangladesh: The individual income tax rates are as under:.

Why is compensation important in Bangladesh?

These forms of compensation motivate the workforce to perform better and trust the management for their collective future. In a developing country like



Bangladesh, where labor costs are comparatively low, a well-structured benefits and compensation package is crucial to hiring the best talent.

What are the benefits of working as an expat in Bangladesh?

The fines can exceed 10,000 BDT to two-year imprisonment or both. Expat workers could enjoy certain additional benefits in Bangladesh, such as – Visa and work permit costs: An employer bears the cost of making an expat worker's work visa and obtaining a work visa.



# Enterprise ESS system cost vs benefit calculation in Bangladesh



## [Cost-benefit analysis \(CBA\): Steps, examples \[+ pros & cons\]](#)

Unlock strategic decision-making with our guide on cost-benefit analysis. Learn its importance, steps, and real-world examples for effective resource allocation.

## [Table 1 . Costs Estimation for Different BESS ...](#)

Download Table , Costs Estimation for Different BESS Technologies. from publication: Break-Even Points of Battery Energy Storage Systems for Peak Shaving Applications , In the last few years



## **Expanding Role of IT in Enterprise Electronic Security Systems**

To avoid excessive costs while maximizing security benefits and capability reuse, the ESS enterprise network enclave may rely on the existing Non-secure Internet Protocol Router ...

## [Employee Self-Service in HRMS: Features & Benefits](#)

How does ESS support compliance in payroll and employee management? What are the cost benefits of using an HRMS with ESS features?



How does ESS facilitate ...



[Key to cost reduction: Energy storage LCOS broken down](#)

Energy storage addresses the intermittence of renewable energy and realizes grid stability. Therefore, the cost-effectiveness of energy storage systems is of vital importance, ...



### Employment Cost Calculator Bangladesh , iCalculator(TM) BD

Discover our Bangladesh Employment Cost Calculator for 2025: a user-friendly tool designed to accurately calculate the total cost of employment and net take-home pay in Bangladesh. Ideal ...



[Free cost-benefit analysis template , Confluence](#)

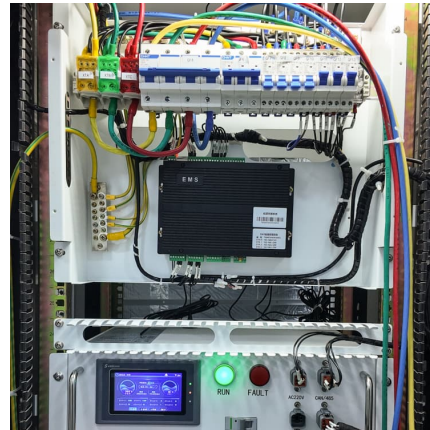
Learn how to create a practical cost-benefit analysis to streamline decision-making and enhance strategic planning for better project outcomes.





### [Employee Self-Service \(ESS\) Management System](#)

PHP HR Employee Self-Service (ESS) Management software empowers employees to manage HR tasks independently, including leave requests, personal information updates, attendance ...



### **Enterprise Resource Planning (ERP): Opportunities, Benefits ...**

Sarker, J. (2024). Enterprise Resource Planning (ERP): Opportunities, Benefits and Implementation Challenges in Bangladesh, International Journal of Science and Business, ...

### [Employment Cost Calculator for Bangladesh, Rivermate](#)

Calculate your complete hiring costs for Bangladesh employees, including payroll taxes, social security contributions, employee benefits, and management fees. This ...



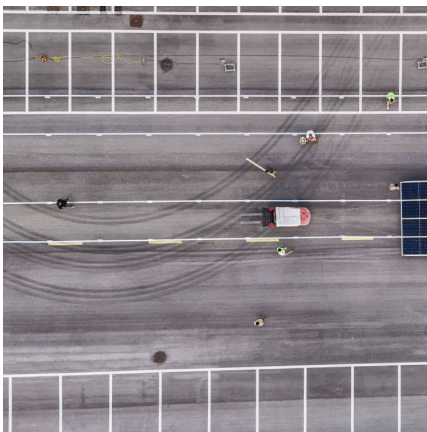
### [The Application and Benefit Evaluation of Digital ...](#)

Because of the lack of effective quantitative benefit evaluation methods for applying digital enterprise resource planning systems in supply chain management, this paper proposes a supply chain



### Pros and cons of the Employee Share Scheme (ESS) vs. the Enterprise

Article explaining the pros and cons of two different types of different HMRC approved employee share scheme, including EMI and ESS.

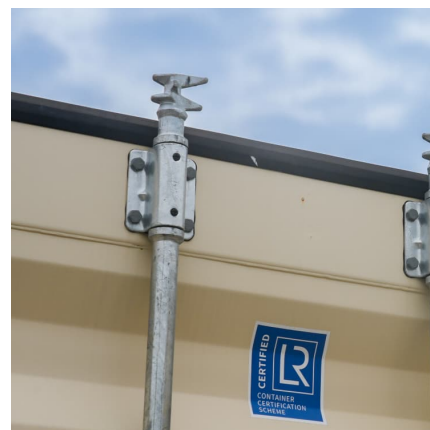


### Optimal sizing of energy storage system and its cost-benefit ...

The cost-benefit investigations on four typical ESSs also indicated that the ESS capital cost, charging/discharging efficiency and lifetime are important properties for optimizing ...

### Employee Costs

Benefits provided to employees (e.g. free housing, free conveyance, free medical etc.) will be determined at the total costs of the resources consumed for providing such benefits and will be ...



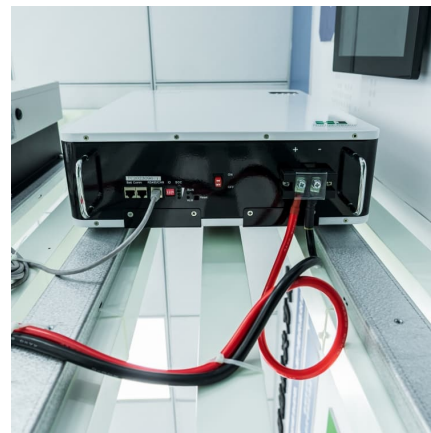


### Enterprise Support Scheme (ESS)

This new quotation limit applies to ESS applications first submitted through the Innovation and Technology Commission Funding Administrative System on or after this date. For applications ...

### What is Employee Self Service?

Employee self-service (ESS) is a web-based technology within company HR systems that empowers employees to manage personal information, access resources, and perform administrative tasks independently, enhancing ...



### [Employee Self-Service Payroll and HR Software](#)

What is employee self-service (ESS) Employee self-service is a portal that is commonly included in Global System of Record or HRIS (Human Resources Information System) software. It gives employees access to changing their ...

### [Employee Self Service \(ESS\): Benefits and Features](#)

Explore the benefits and features of Employee Self Service (ESS) systems and how they improve workplace efficiency and employee satisfaction.



### Bangladesh Payroll, Benefits & Taxes , 2025 Guide , Skuad

Learn about benefits and compensation in Bangladesh, including legal rules, tax impact, and tips to build a strong employee program.



### Battery Energy Storage Systems (BESS)

Battery Energy Storage Systems Energy Storage Systems (ESS) have become an integral part of modern electrical infrastructure. So much so that they are even beginning to make their way into the residential sector. ...



### [Employee Self-Service in HRMS: Features & Benefits](#)

How does ESS support compliance in payroll and employee management? What are the cost benefits of using an HRMS with ESS features? How does ESS facilitate remote and hybrid work models? Technology is best ...





### [Enrollment for Education Solutions \(EES\). Microsoft...](#)

The document outlines the Enrollment for Education Solutions (EES) program, designed for educational institutions with over 1,000 users. It simplifies licensing, provides flexible ordering options, and ensures ...



### [Employee Self Service Systems \(ESS\): Transforming ...](#)

Incorporating an employee self service system into your HR and payroll processes is no longer just a best practice--it's essential for modern businesses. The efficiencies gained, cost savings realised, and improvements in employee ...

### [How to determine meaningful, comparable costs of...](#)

While there is general consensus to use the levelized cost of energy (LCOE) for comparing different energy generation technologies, there is no such universally-adopted metric for the cost of energy storage. In this ...



### **Employment Cost Calculator Bangladesh , iCalculator(TM) BD**

Whether you're a small business owner in Bangladesh, a HR professional, or an individual employee, our Bangladesh Employment Cost Calculator is an essential tool to simplify complex ...



### **Employee Benefits in Bangladesh**

Employee benefits are non-financial forms of payment provided in addition to salaries by organizations to improve the well-being of employees. It is an essential aspect of ...



## **Contact Us**

---

For catalog requests, pricing, or partnerships, please visit:  
<https://conrad.edu.pl>