

# Energy storage soh range





## Overview

---

SOC measures remaining energy, ranging from 0% (empty) to 100% (full). SOC helps operators know how much energy is available at any given moment. SOH evaluates the current performance compared to the battery's original condition. When capacity drops below 80%, replacement is.

SOC measures remaining energy, ranging from 0% (empty) to 100% (full). SOC helps operators know how much energy is available at any given moment. SOH evaluates the current performance compared to the battery's original condition. When capacity drops below 80%, replacement is.

Understanding and managing SoH is key to maximizing the operational lifespan of BESS, reducing maintenance costs, and ensuring reliable energy storage for the future. In this article, we explore the concept of State of Health (SoH) in energy storage systems, how it works, the technologies used to.

Energy storage system SOH (State of Health) refers to the overall condition and functionality of an energy storage device. 2. It incorporates various metrics to assess both capacity and performance. 3. Critical factors such as temperature, charge cycles, and age directly influence SOH. 4. A higher.

Not sure how to choose the right battery for your energy storage project?

This all-in-one guide explains the key performance metrics buyers must understand—SOC, SOH, cycle life, and more. SOC (State of Charge) shows the percentage of energy remaining in a battery. SOH (State of Health) compares.

State of health (SOH) is one of the important parameters of battery products. It describes the storage capacity of the battery in the current state, that is, the ratio of the available capacity of the battery in the current state to the available capacity of the battery in the outgoing state, and.

State of Health (SOH) is a vital metric in battery energy storage systems, representing the current performance and capacity of a battery relative to its original condition. Expressed as a percentage, SOH provides a clear indication of battery aging. For example, a battery with 90% SOH retains 90%.



Capacity measures how much energy a battery can deliver. For example, a 48V 100Ah cell equals 4.8 kWh. Capacity values are usually divided into rated, theoretical, and actual capacity. In practical use, actual capacity is always influenced by temperature, charge/discharge rate, and cycle. What is the SOH distribution of 216 cells in the energy storage system?

The estimated SOH distribution of all 216 cells in the energy storage system is illustrated in Fig. 6, implying large SOH differences among cells. Most of the cell SOH values range from 70% to 80% while the SOH maximum is beyond 85% and the minimum is slightly higher than 60%.

What is battery state-of-health (SoH) in a 20 kw/100 kW h energy storage system?

The battery state-of-health (SOH) in a 20 kW/100 kW h energy storage system consisting of retired bus batteries is estimated based on charging voltage data in constant power operation processes. The operation mode of peak shaving and valley filling in the energy storage system is described in detail.

What is a lithium ion battery energy storage system?

As a critical link in the new energy industry chain, lithium-ion (Li-ion) battery energy storage system plays an irreplaceable role. Accurate estimation of Li-ion battery states, especially state of charge (SOC) and state of health (SOH), is the core to realize the safe and efficient utilization of energy storage systems.

What is a 20 kw/100 kW h battery energy storage system?

The 20 kW/100 kW h Li-ion battery energy storage system (BESS) supplies power to a commercial building. The system contains a battery pack, battery management system (BMS) and power conversion system (PCS) shown in Fig. 1 (a).

How can a low Soh battery improve energy storage?

According to the SOH evaluation, the energy storage of the BESS will be significantly improved if some cells or modules with lower SOH are replaced. In the condition of the unknown SOH of battery, the relative aging degree of battery can be obtained by grading the H value on ICA or PDF curves based on actual charging voltage data.

What is the SoH of a battery?

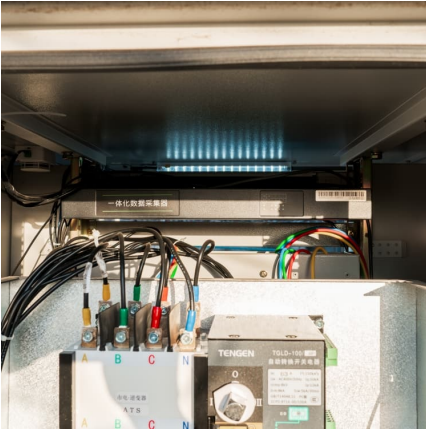


The SOH of a battery is a comprehensive indicator that reflects the health of the battery during long-term use. By monitoring the SOH of a battery, its health status can be assessed promptly, and appropriate measures can be taken to extend the battery's service life and maintain its performance.



## Energy storage soh range

---



### A SOH Estimation Method for Lithium-Ion Batteries Based on ...

Lithium-ion batteries are the primary power source for new energy vehicles, making accurate estimation of their state of health (SOH) essential for ensuring the safe ...

### Fast equalization of lithium battery energy storage system based ...

The LiB with different state-of-health (SOH) values can be re-used as the energy storage system in many scenarios, e.g., the building integrated energy system, photovoltaic ...



### Energy Dense Materials Market Size to Worth USD 211.44 Billion ...

22 ????· According to Towards Chemical and Materials, the global energy dense materials market size was reached at USD 63.12 billion in 2024 and is expected to be worth around USD ...

### [What does DOD, SOC, SOH mean? Interpretation of ...](#)

As the cornerstone of energy storage systems, energy storage batteries bear the crucial mission of providing stable and reliable energy. A ...



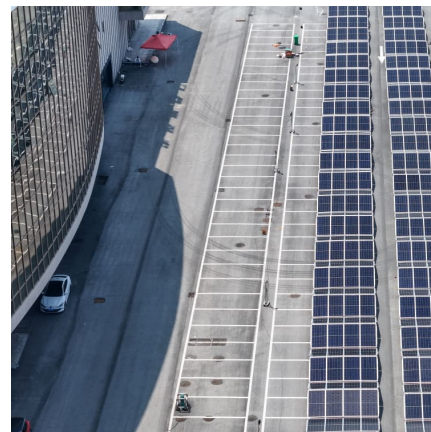
### **A comprehensive review of state-of-charge and state-of-health**

Accurate estimation of Li-ion battery states, especially state of charge (SOC) and state of health (SOH), is the core to realize the safe and efficient utilization of energy ...



### 2025 H1 Global Shipment of Energy Storage Batteries

HiTHIUM's first 6.25MWh Energy Storage Solution is tailored for the North American market and the 4-hour long-duration energy storage application scenarios. Designed with a focus on cost ...



### **Journal of Energy Storage**

Introduction Lithium-ion batteries (LIBs) are widely used in electric vehicles (EVs) and renewable energy storage systems. However, battery aging inevitably occurs during ...





### State of health estimation of second-life lithium-ion batteries under

The SOH estimation method described in Section 3 is validated with the experimental testing of a FL and a SL cell under the real operating profiles explained in Section ...



### [What is Battery SOC\(State of Charge\) and SOH\(State ...](#)

What is Battery SOH (State of Health)? SOH stands for State of Health. It is the ratio of the current battery's full charge energy to the full ...

### [Review on state-of-health of lithium-ion batteries: ...](#)

State-of-health (SOH) monitoring of lithium-ion batteries plays a key role in the reliable and safe operation of battery systems. Influenced by multip...



### [SOH in battery - definition and measurement methods](#)

Lithium-ion batteries have become the main choice of power supply for energy storage systems and electric vehicles and other electric products. In order to ...



### A framework of joint SOC and SOH estimation for lithium-ion ...

The change in state of health (SOH) of lithium-ion batteries directly affects the accuracy of state of charge (SOC) and terminal voltage estimation. This work proposes a joint ...



### Understanding Battery SoH - Key To Extending ...

With the increasing use of battery-based technologies, such as in electric vehicles, electronic devices, and renewable energy storage systems, ...

### DOD, SOC, SOH Explained: Key Parameters of Energy Storage ...

As renewable adoption accelerates, the Energy Storage Battery has become the foundation of every Energy Storage System. To design or manage such systems effectively, it is essential to ...





### **A SOH estimation method of lithium-ion batteries based on partial**

Li-ion batteries are widely used in energy storage devices and electric mobility due to their impressive energy and power density, and long service life [1]. Nevertheless, ...

### **SOH Estimation for Battery Energy Storage Systems Based on ...**

In this article, an SOH estimation method based on a multiscale temporal convolutional network (MSTCN) with parameter-free attention and relaxation voltage is proposed.



### **A battery SOH estimation method based on entropy domain ...**

Electrochemical energy storage technology, a critical component of renewable energy systems, has advanced rapidly in recent years. Lithium-ion batteries have become the ...

### **Fast joint SOC-SOH estimation method for energy storage ...**

The state of charge (SOC) and state of health (SOH) of energy storage batteries are important parameters for the safe operation of energy storage systems. When dealing with ...





### State of Health (SoH) in Energy Storage Systems: Enhancing ...

Explore the concept of State of Health (SoH) in energy storage systems, how it works, the technologies used to monitor it, and strategies to improve the lifespan of these systems.

### A balanced SOH-SOC control strategy for multiple battery energy storage

As the PCS transmission power of the energy storage system affects the ageing degree of the energy storage unit, for this reason, this paper proposes a multi-storage unit ...



### Soho Energy Group

SOHO Energy Group is an independent physical energy company that provides global financial and logistical solutions through strategic investments in vessels, storage terminals, and ...

### A new SOH estimation method for Lithium-ion batteries based on ...

A new method for the estimation of the state-of-health (SOH) of lithium-ion batteries (LIBs) is proposed. The approach combines a LIB equivalent circu...



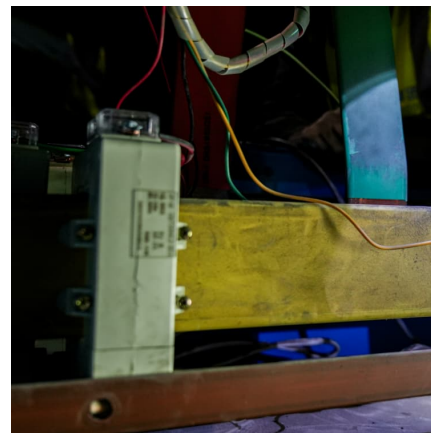


[What does energy storage system soh mean .  
NenPower](#)

Energy storage acts as a buffer for fluctuation in generation, and if the SOH of the storage system is low, overall system efficiency suffers, ...

**Review of battery state estimation methods for electric vehicles ...**

The studies highlighted in this review demonstrate significant advancements in SOH estimation techniques, leading to improved accuracy, efficiency, and adaptability. These ...



**What does DOD, SOC, SOH mean?  
Interpretation of core ...**

As the cornerstone of energy storage systems, energy storage batteries bear the crucial mission of providing stable and reliable energy. A thorough understanding of the ...



**State of Health (SoH) estimation methods for second life lithium ...**

Considering the uncertainties in the battery behaviour, the second-life SoH estimation should be accurate enough for certification purposes, where the repurposer will ...



### **Dyness Knowledge , Solar and energy storage must-learn ...**

State of health (SOH) is one of the important parameters of battery products. In the energy storage industry, energy storage batteries are a common energy storage device. ...

## **Contact Us**

---

For catalog requests, pricing, or partnerships, please visit:  
<https://conrad.edu.pl>