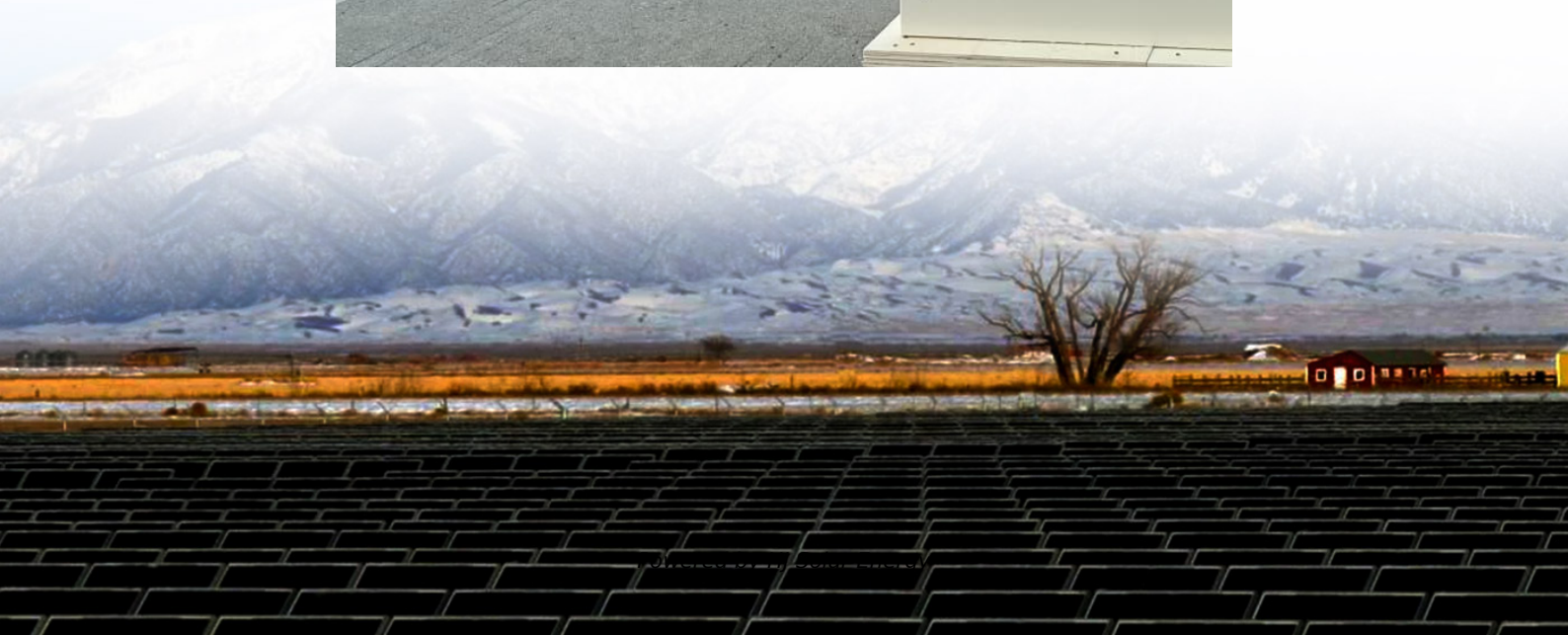


# **Energy storage power station battery maintenance plan**





## Overview

---

Why should battery energy storage systems be maintained?

Battery energy storage systems can be affected by various factors during everyday use, such as ambient temperature, load changes, and battery aging. Regular maintenance helps detect potential issues, prevents sudden system failures, and ensures long-term stable operation.

What are battery storage power stations?

Battery storage power stations are usually composed of batteries, power conversion systems (inverters), control systems and monitoring equipment. There are a variety of battery types used, including lithium-ion, lead-acid, flow cell batteries, and others, depending on factors such as energy density, cycle life, and cost.

How often should energy storage systems be maintained?

The required maintenance frequency may vary depending on the type of energy storage system. However, the following maintenance schedule is generally recommended: Monthly Check: Basic checks such as battery status, thermal management system, and BMS operation.

What are the guidelines for battery management systems in energy storage applications?

Guidelines under development include IEEE P2686 “Recommended Practice for Battery Management Systems in Energy Storage Applications” (set for balloting in 2022). This recommended practice includes information on the design, installation, and configuration of battery management systems (BMSs) in stationary applications.

What is a battery energy storage system (BESS)?

With the rapid development of renewable energy, Battery Energy Storage Systems (BESS) are widely used in power, industrial, and residential sectors.



Regular maintenance is essential to ensure the safety, efficiency, and longevity of battery energy storage systems.

Can predictive maintenance help manage energy storage systems?

This article advocates the use of predictive maintenance of operational BESS as the next step in safely managing energy storage systems. Predictive maintenance involves monitoring the components of a system for changes in operating parameters that may be indicative of a pending fault.



## Energy storage power station battery maintenance plan

---



### Stationary Battery Guide: Design, Application, and Maintenance

Every power plant and substation has one or more battery-backed direct current (dc) auxiliary power systems. These systems operate critical equipment when a loss of alternating current ...

### Standardization of energy storage station maintenance ...

The energy storage systems (ESS) and generation capabilities, such as photovoltaic (PV) systems and wind energy systems, can be included in the station system to reduce demand ...



### Photovoltaic energy storage power station maintenance plan

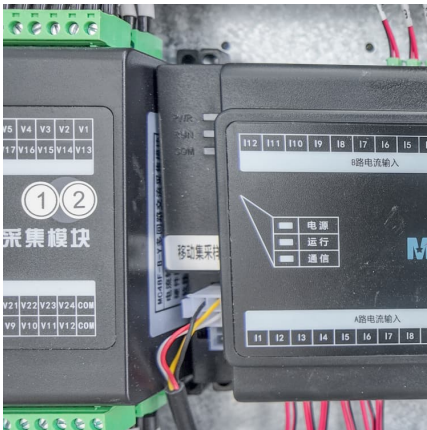
The simultaneous design and allocation of the hybrid energy microgrid system in the IEEE 33-bus distribution network with the aim of minimizing the costs of power losses, production of ...

### Battery Energy Storage: Commitment to Safety & Reliability

Battery Energy Storage is the Swiss Army Knife of the Power Grid Batteries are present in every part of our lives, from mobile phones to watches



and laptops - even toothbrushes and lawn ...



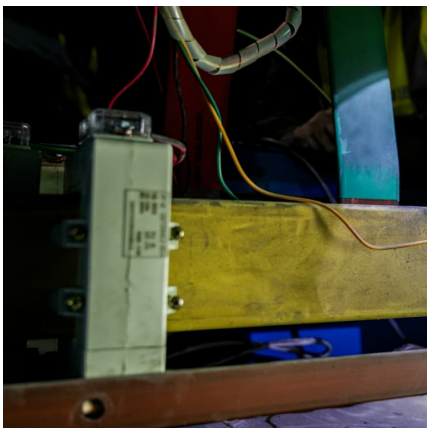
### BATTERY ENERGY STORAGE SYSTEMS (BESS) --

---

1. The technological framework of battery storage As short-term storage devices, batteries offer a high degree of flexibility by balancing power outputs and scheduling discharges to efficiently ...

### **A Simple Guide to Energy Storage Power Station Operation and ...**

In this blog post, we'll break down the essentials of energy storage power station operation and maintenance. We'll explore the basics of how these systems work, the common ...



### **Technologies for Energy Storage Power Stations Safety ...**

As large-scale lithium-ion battery energy storage power facilities are built, the issues of safety operations become more complex. The existing difficulties revolve around ...



## Photovoltaic energy storage power station maintenance plan

The goal of this guide is to reduce the cost and improve the effectiveness of operations and maintenance (O& M) for photovoltaic (PV) systems and combined PV and energy storage

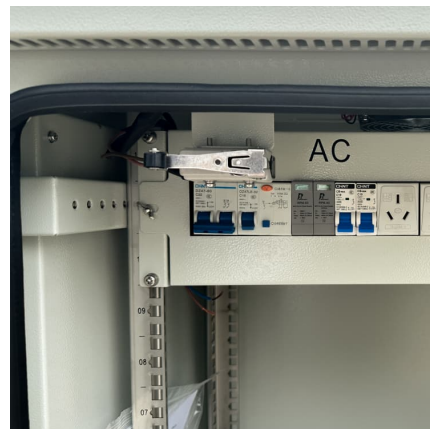


## battery storage power plant

Battery Storage Power Plant Operation and Maintenance Energy storage power plant operation and maintenance plans cover all key aspects to ensure optimal performance and reliability. ...

## Adopting Predictive Maintenance Practices for Battery ...

At times, energy storage development in the electric power industry has preceded the formulation of best practices for safety and ...



## [Industrial and commercial energy storage power station](#)

This article provides an overview of industrial and commercial energy storage power stations, focusing on their construction, operation, and maintenance ...



### [Battery Energy Storage Systems Report](#)

This information was prepared as an account of work sponsored by an agency of the U.S. Government. Neither the U.S. Government nor any agency thereof, nor any of their employees, ...



### [Energy Storage for Power System Planning and Operation](#)

In Chapter 1, energy storage technologies and their applications in power systems are briefly introduced. In Chapter 2, based on the operating principles of three types of energy storage ...

### **Commissioning and Maintenance Processes for Energy Storage ...**

As renewable energy continues to grow rapidly, energy storage systems are becoming an essential part of modern power systems. Proper commissioning and maintenance ...





[Battery storage power station - a comprehensive guide](#)

The guide covers the construction, operation, management, and functionalities of these power stations, including their contribution to grid stability, peak shaving, ...

[Handbook on Battery Energy Storage System](#)

The Ni-MH battery combines the proven positive electrode chemistry of the sealed Ni-Cd battery with the energy storage features of metal alloys developed for advanced hydrogen energy ...

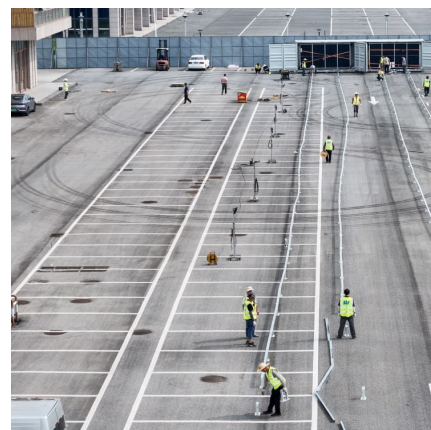


**Optimal scheduling strategies for electrochemical energy ...**

power station to decline. Providing reserve services, however, has lower requirements for battery performance, needing only to maintain a certain energy and power reserve, and is thus less ...

**Energy storage power station operation and maintenance ...**

In order to solve the problems in big data analysis of maintenance of large-scale battery energy storage stations, an intelligent operation and maintenance platform has been designed and





[Energy storage power station safety maintenance plan](#)

The EESS is composed of battery, converter and control system. In order to meet the demand for large capacity, energy storage power stations use a large number of single batteries in series ...

**Development of Smart Operation and Maintenance Platform for ...**

With the continuous growth of the installed capacity of battery storage power stations and the expansion of single station scale, the operation and maintenance level has become the key to ...



[Energy storage battery module maintenance plan](#)

Today, lithium-ion battery energy storage systems (BESS) have proven EPRI's battery energy storage system database has tracked over 50 utility-scale battery failures, most of which ...

**Energy Storage Battery Pack Maintenance Tooling: Your 2025 ...**

Whether you're a solar farm operator, a data center engineer, or an EV charging station manager, battery maintenance tooling is what stands between you and costly downtime.





## 1 Battery Storage Systems

Each storage type has namely, capacity, energy and power output, charging/discharging rates, efficiency, life-cycle r possible ap ste includes ...

### [Grid-Scale Battery Storage: Frequently Asked Questions](#)

A battery energy storage system (BESS) is an electrochemical device that charges (or collects energy) from the grid or a power plant and then discharges that energy at a later time to ...



## Contact Us

---

For catalog requests, pricing, or partnerships, please visit:  
<https://conrad.edu.pl>