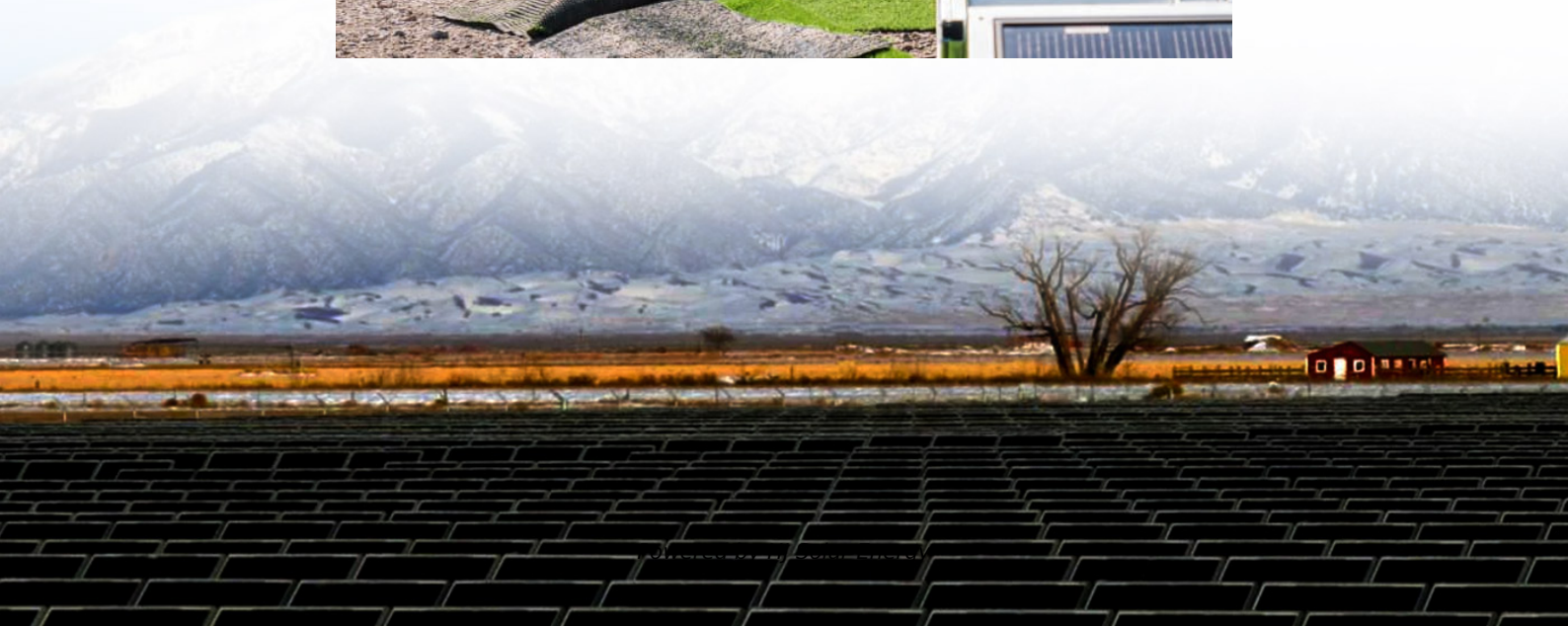


Duracell battery charger solid red





Overview

What do the lights on my Duracell battery charger mean?

The lights on your Duracell battery charger indicate the charging status of your batteries. The green light means the batteries have completed charging and are ready for use. The yellow light means the batteries are currently charging, and the red light means the battery charger is not connected to a power source.

What does a red light on a Duracell Charger mean?

Red lights might look like a bad thing, but that's not always the case on Duracell chargers. Especially when there's a solid red light on one of these things! The solid red light isn't a warning sign or anything. It's only an indicator that the batteries are charging. It'll keep shining bright red without any changes, like this:.

What does a green light on a Duracell Charger mean?

Solid Green Light on Duracell Charger Like I mentioned just now, the solid red light will go away on its own when the cells charge fully. Once that happens, it'll be replaced by a green one instead! That solid green light is a signal to users that their batteries are at 100% and ready to remove.

How do you charge Duracell batteries?

Plug it into an AC outlet. When batteries are first inserted correctly and the charger is plugged in, LED lights will cycle through RED and then GREEN. When the batteries are charged, LED lights turn RED. When the batteries are ready to use, LED lights will blink green. How long does it take Duracell rechargeable batteries to charge?

.

How do I know if my Duracell batteries are fully charged?



When your Duracell rechargeable batteries are charging, the LED light indicator on the charger will turn from red to green to indicate that your batteries are fully charged. To conserve battery life, you should never let your batteries run down fully and always unplug your charger when your batteries are charged.

How do I know if my Duracell charger is working?

A Duracell charger has a red and green LED. At some point, you can expect both lights to illuminate and flash. 1). Red and Green Light When you first insert the batteries, the charger will cycle through the red and green LEDs if you inserted the batteries correctly.



Duracell battery charger solid red

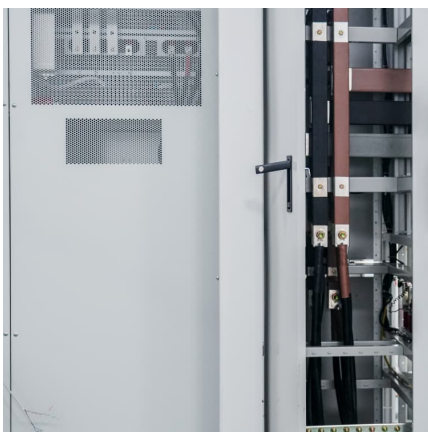


How do I know if my Duracell battery charger is working?

If the light blinks red in about 90 seconds after battery insertion, then the battery voltage is too low. Leave the batteries in the charger, while the light continues to blink ...

[Meanings of Duracell Battery Charger Light \(Blinking ...\)](#)

My Duracell battery charger has light indicators on it to show the current stats of the battery charging. It is able to charge AA and AAA size rechargeable batteries.



How do I know when my Duracell rechargeable batteries are ...

The color red indicates a bad battery, the amber lightning bolt indicates that the battery is charging, and the plain solid red indicates that your battery connections are loose.

Quick Answer: Why Is My Duracell Battery Charger Blinking Red

How do I fix my Duracell charger blinking red? *
If Blinking Red LED is encountered, first ensure you are attempting to charge a NiMH AA or AAA

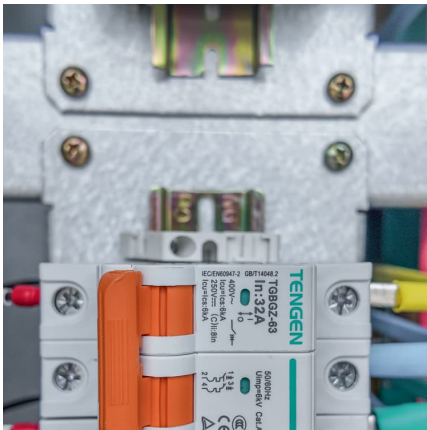


battery. If yes, ...



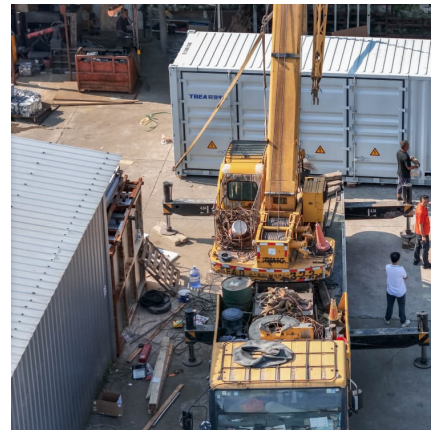
[How Do You Know When Duracell Batteries Are Charged](#)

The red LED light on the charger will appear, indicating that the battery is charging. If the LED light is flashing, there is a malfunction and the batteries aren't charging.



[What do the lights mean on my Duracell battery charger?](#)

The yellow light means the batteries are currently charging, and the red light means the battery charger is not connected to a power source. If the light blinks red and green, this indicates that ...



What do the different colours and sequence of lights mean on my

Here are the most common light status's:
Flashing Green (1 second on, 4 seconds off) - In standby
Breathing Green (1 second on, 1 second off) - Charging
Breathing Yellow (1 second on ...





Meanings of Duracell Battery Charger Light (Blinking Red, Solid Red)

My Duracell battery charger has light indicators on it to show the current stats of the battery charging. It is able to charge AA and AAA size rechargeable batteries.



[Why Is My Duracell Battery Charger Blinking Red?](#)

Whilst most intelligent chargers are set to a trickle charge once the rechargeable battery is fully charged, to avoid damage to the battery, it is still best to take the batteries out of ...

[Duracell Charger Blinking/Flashing Red, Green & No Light](#)

Here are the most common light status's:
Flashing Green (1 second on, 4 seconds off) - In standby
Breathing Green (1 second on, 1 second off) - Charging
Breathing Yellow (1 second on ...



[Duracell Charger Blinking/Flashing Red, Green & No Light](#)

According to this Duracell manual, if you take the batteries out and then re-insert them into the charger, the red light will flash because the charger can tell that the batteries are fully charged.



Contact Us

For catalog requests, pricing, or partnerships, please visit:
<https://conrad.edu.pl>