

Correct usage of energy storage welding





Correct usage of energy storage welding



How much current does the energy storage welding machine have?

1. Energy storage welding machines typically operate with a current range of 200 to 800 amps, depending on their design and application, 2. The current output is ...

PROPER STORAGE OF WELDING CONSUMABLES

The future of energy storage spiral welding gun Energy storage is a potential substitute for, or complement to, almost every aspect of a power system, including generation, transmission, ...



Correct use of energy storage welding machine

pect of proper storage for welding equipment. By covering your welding machines and equipment with protective covers or tarps, you shield them from dust debris, and potential damage during ...



What are the accessories for energy storage welding screws?

Energy storage welding screws, commonly used within different applications in renewable energy sectors, require specific accessories to ensure



optimal performance within ...

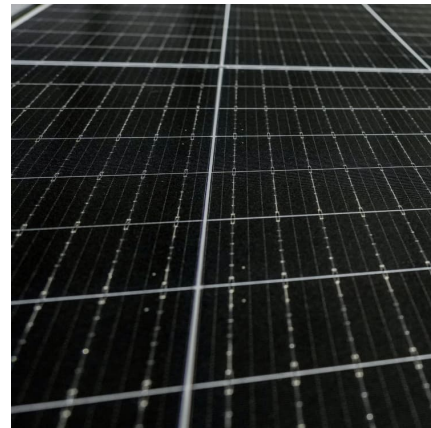


[What is energy storage welding used for?.. NenPower](#)

Energy storage welding is utilized for a variety of applications in both industrial and residential settings. 1. Joining metals, 2. High energy efficiency, 3. Versatility across ...

Electrode Selection

Electrode Selection and Application in Welding
Electrode Selection is one of the most important decisions in welding. The strength, durability, and appearance of a weld all ...



[GUIDELINES FOR PERSONAL PROTECTIVE EQUIPMENT...](#)

REQUIREMENTS The Washington State Department of Labor and Industries (L& I) in WAC 296-800-160 Personal Protective Equipment (PPE) requires all employers to assess their ...



What maintenance does the energy storage welding machine need?

Productivity in welding operations heavily relies on the equipment's efficiency. When an energy storage welding machine functions reliably, it allows for smoother workflows, ...

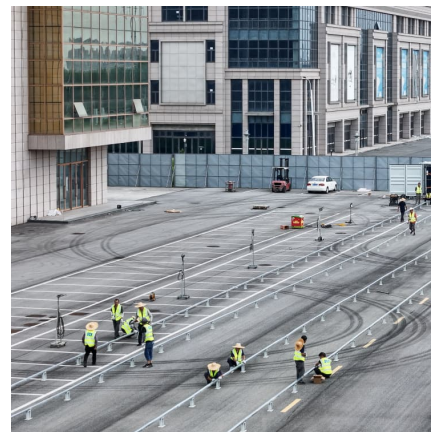


What is the price of energy storage welding machine , NenPower

Energy storage welding machines generally consist of two main components: the welder itself and the energy storage system. The welder uses electrical arcs for joining ...

Welding and Hot Work

Other Hazards Welding arc rays: Position welding curtains to protect employees from intense light. Provide the proper shade of lens. Electrical shock: Keep working conditions dry, and ...



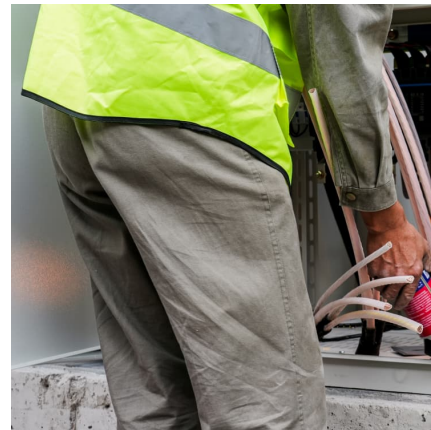
What are the Wujin energy storage stud welding machines?

Wujin's energy storage stud welding machines adhere to national and international welding standards, ensuring that their products meet the quality and safety ...



What are the disadvantages of energy storage welding machine?

The limited duty cycles of energy storage welding machines can be a significant challenge for high-volume welding applications. Duty cycles dictate how long a machine can ...



[Simple energy storage welding machine maintenance](#)

From routine cleaning and inspection to ensuring proper storage and handling, these simple practices can go a long way in extending the lifespan of your welding ...

News

The performance of energy storage welding machines is influenced by several key factors, including the energy storage capacity, welding current, electrode pressure, electrode design ...





Correct usage of energy storage welding

Proper storage of welding rods, hoses, tanks, and welders will help to maintain functionality, prolong gear life, and ensure the safety of both the equipment and the individuals who use it.

What are the Wujin energy storage welding machines?

Energy storage technology is the cornerstone of Wujin welding machines, allowing for efficient energy use and enhanced performance. These machines typically utilize ...



Why is Energy Storage Welding Machine Production So Efficient?

Conclusion: The high efficiency of energy storage welding machine production can be attributed to several key factors, including rapid energy release, short cycle times, high power density, ...

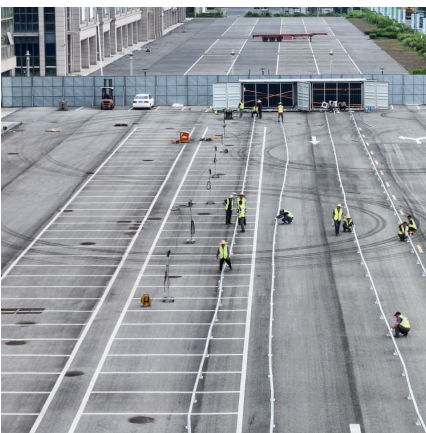
What should I pay attention to when using energy storage welding

When utilizing an energy storage welding machine, attention must be directed towards 1. Understanding machine specifications, 2. Safety protocols, 3. Proper maintenance, ...



How to Safely Use an Energy Storage Spot Welding Machine?

This article provides guidelines on how to safely use an energy storage spot welding machine, emphasizing the importance of personal protective equipment (PPE), equipment inspection, ...



Pro Tips for Storing and Handling Welding Electrodes ...

Introduction Welding is a critical process in numerous industries, ranging from construction and manufacturing to aerospace and automotive. ...



Energy Storage Cabinet Welding Specification Requirements: ...

Why Proper Welding Could Make or Break Your Energy Storage Projects Did you know that 68% of energy storage cabinet failures traced back to welding defects last year? ...





Energy Storage Welding: The Spark Behind Modern Manufacturing

Meet energy storage welding - the unsung hero in creating reliable connections for batteries, supercapacitors, and renewable energy systems. This pulsed power technique ...



[Cleaning Methods for Energy Storage Welding Machines?](#)

Electrode Cleaning: The electrodes used in energy storage welding machines can become contaminated with weld spatter, oxidation, or other residues, affecting their performance and ...

Energy Storage Welding: A Comprehensive Guide for Precision ...

What Is Energy Storage Welding? The Science Behind the Spark Ever wondered how to fix a delicate metal component without warping it like a potato chip in a ...



How much is the voltage of the energy storage welding machine?

The voltage of energy storage welding machines varies significantly based on their design and application. 1. Typical voltage ranges for these devices are betwe...



[can i leave an oxygen regulator pressurized , LOVTEC](#)

12 ????· Whether you're using it for medical purposes or welding, understanding the correct usage and storage of a pressurized oxygen system is vital. This article will guide you through ...

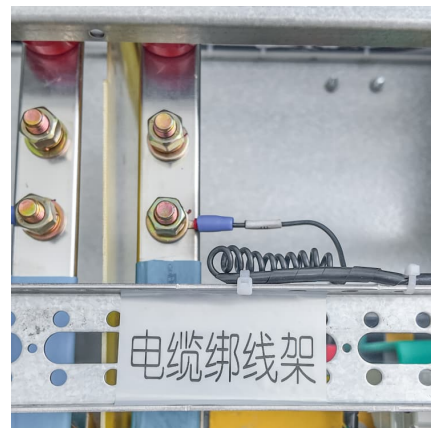


[Correct usage of energy storage welding](#)

a reliable and efficient energy supply. However, there are several challenges associated with energy storage technologies that need to be addressed for wides and be ready for the next ...

[How about the energy storage welding machine electrode](#)

Energy storage welding machines are sophisticated devices that utilize powerful electrodes to perform high-quality welding tasks. 1. These machines enhance welding ...





Contact Us

For catalog requests, pricing, or partnerships, please visit:
<https://conrad.edu.pl>