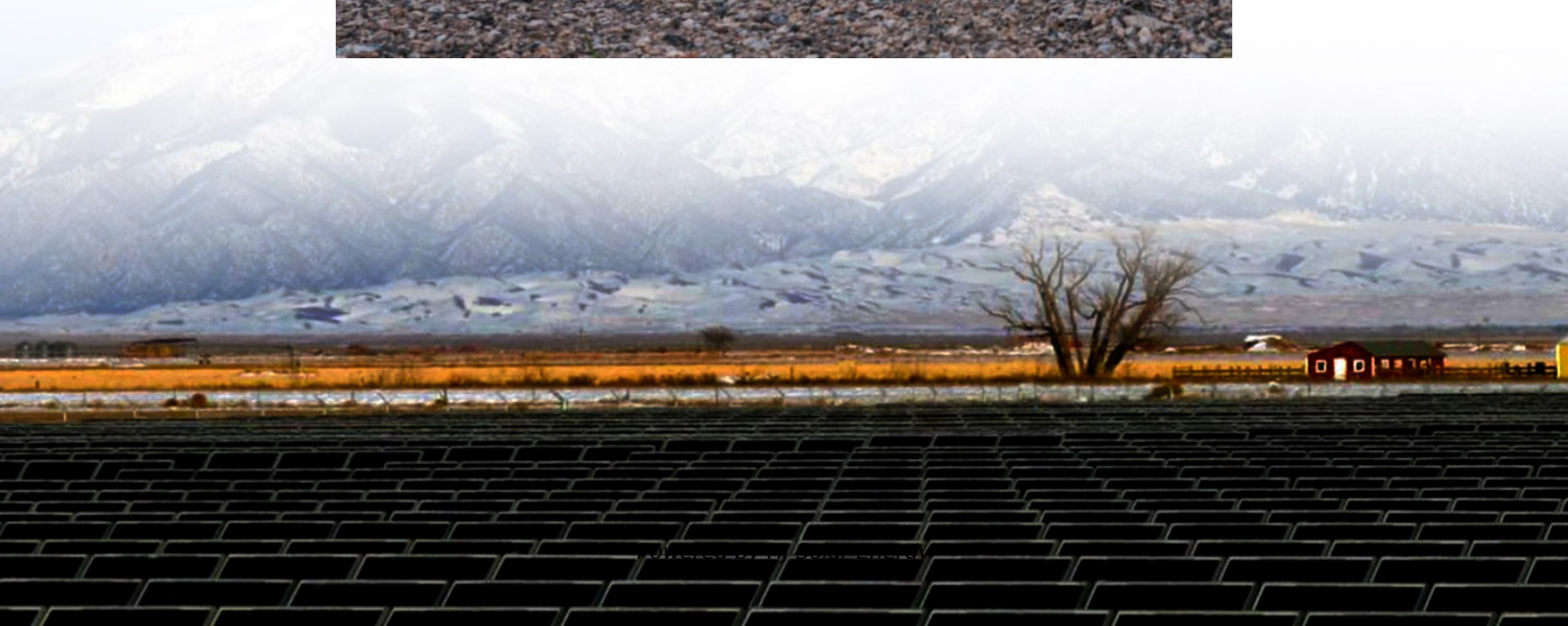


# **Connect solar to bus bar or battery**





## Overview

---

Is it okay to connect my solar charge controller, my inverter, and my battery to a bus bar?

Most of the diagrams I see connect the charge controller and inverter directly to the battery.

Is it okay to connect my solar charge controller, my inverter, and my battery to a bus bar?

Most of the diagrams I see connect the charge controller and inverter directly to the battery.

Connecting battery through bus bar?

Is it okay to connect my solar charge controller, my inverter, and my battery to a bus bar?

Most of the diagrams I see connect the charge controller and inverter directly to the battery. However, I'm looking for portability and would like to mount all of the.

Making your own DIY busbars is easy. This article shows you how to make busbars, save money, and have more diverse connection points available. Let's talk about the functions of a busbar first: A busbar is a distribution point in an electrical system. It consolidates multiple electrical connections.

Then connect that bus bar to another that is attached to shore power, MPPT, inverter, and a fuse block. A shunt in between the two bus bars. Is that not the best way to achieve near "perfectly balanced charging?

" And for my setup, it would use less wire and look very clean. Something like this. Put.

A central buss bar allows you to add in individual fuses on each spur, and means that you are only ever dealing with one connection at a time when you



undo a fixing nut. Much less likely to drop one cable than multiple ones and therefore less likely to accidentally short something. Lastly it means.

But when it comes to connecting them, you have two main choices: cables or bus bars. This article will explore the pros and cons of each, helping you decide which is the best option for your needs, with a particular focus on the advantages of using a 48v battery bus bar. What is a Solar Battery Bus.

Wiring a busbar in a solar power system involves connecting the various components of the system, such as the solar panels, charge controller, and batteries, to the busbar. Here's a general guide on how to wire a busbar: Mount the Busbar: First, mount the busbar on a non-conductive, fire-resistant. How do you wire a busbar in a solar power system?

Wiring a busbar in a solar power system involves connecting the various components of the system, such as the solar panels, charge controller, and batteries, to the busbar. Here's a general guide on how to wire a busbar: Mount the Busbar: First, mount the busbar on a non-conductive, fire-resistant surface.

Do I need A busbar for off-grid solar?

In most systems, more than three leads will go to the battery. Therefore a busbar is required. Sizing a busbar for off-grid solar applications involves several factors, including the maximum current that the busbar will need to carry, the material of the busbar, and the allowable temperature rise. Here's a general guide on how to size a busbar:.

What is a battery busbar?

A terminal block, or battery busbar, is a specific type used in battery systems, including those in solar power installations. It serves a similar function as a regular busbar, but it is specifically designed to connect multiple batteries in a battery bank.

How do I wire a busbar?

Here's a general guide on how to wire a busbar: Mount the Busbar: First, mount the busbar on a non-conductive, fire-resistant surface. The busbar should be located close to your battery bank and inverter to minimize the length of the cables and thus reduce power loss. Connect the Battery: Connect your battery to the busbar.



How do you connect a charge controller to a busbar?

Again, the positive terminal should be connected to the positive busbar and the negative terminal to the negative busbar. Connect the Charge Controller: Connect the output cables from your charge controller to the busbar. The positive cable should be connected to the positive busbar and the negative cable to the negative busbar.

How to connect an inverter to a busbar?

Connect the Inverter: Finally, connect your inverter to the busbar. The positive input cable of the inverter should be connected to the positive busbar and the negative input cable to the negative busbar. If you have a big inverter (>1000W), there will be a spark. This is caused by the charging of capacitors in the inverter.



## Connect solar to bus bar or battery

---



### 48V Battery in Parallel: Cable vs. Bus Bar--Which is Better?

But when it comes to connecting them, you have two main choices: cables or bus bars. This article will explore the pros and cons of each, helping you decide which is the best option for ...

### How to Choose a Bus Bar for Your DIY Solar Project , Prked [2024]

Learn how to choose & size the right bus bar for your DIY solar system. Our guide covers sizing, materials (copper vs. aluminum) & installation tips. Build safer!



### [5 Steps for a DIY Busbar for Solar Power System](#)

Plenty of people make interconnections directly on the battery terminals. Works fine, but having done it myself before, when I install my new bank I shall bring ...

### [Connect to Bus Bar of battery? , DIY Solar Power Forum](#)

As a beginner to van electronics, I assumed that I would have to connect my Vans DC-DC charger and the shore power charger direct to the house batteries. I will be using ...



### [How To Use A Bus Bar Solar With Battery](#)

Connecting the solar charge controller, inverter, and battery to a bus bar is generally acceptable, as it distributes electrical power efficiently and effectively.

### **Solar setup from scratch**

Only connections to the battery are the shunt for battery monitor (@ Negative terminal) and the cable connecting battery to the positive bus. Inverter, Solar, Charger, ...



### **Caravan Solar Upgrade**

The photo is how it is now - I want the high current connections done better better - ie 240v charging, solar charging and alternator charging as per diagram and monitored via VictronConnect App.

[Solar charging and busbar : r/SolarDIY](#)



In smaller systems you normally run the solar straight to the controller (plugs help when you need to work on things, otherwise a switch is better than disconnecting ...



### [Solar charging and busbar : r/SolarDIY](#)

In smaller systems you normally run the solar straight to the controller (plugs help when you need to work on things, otherwise a switch is better than disconnecting terminals). The ...

### [5 Steps for a DIY Busbar for Solar Power System](#)

It consolidates multiple electrical connections into a single point, facilitating power distribution from and to various components like the battery, charge controller, inverter, ...



### [What is a Busbar? The Key to DIY Solar Power](#)

Wiring a busbar in a solar power system involves connecting the various components of the system, such as the solar panels, charge controller, and batteries, to the busbar. Here's a general guide on how to wire a busbar:



### [What is a Busbar? The Key to DIY Solar Power](#)

Wiring a busbar in a solar power system involves connecting the various components of the system, such as the solar panels, charge controller, and batteries, to the ...



### **Parallel Battery Bank: Direct Connector or Bus Bar? : r/SolarDIY**

Plenty of people make interconnections directly on the battery terminals. Works fine, but having done it myself before, when I install my new bank I shall bring all connections ...

### [Connect batteries individually to bus bar for](#)

Generally speaking bus bar setups are optimal; however, the "halfway" method is also very effective if done correctly, though it is challenging with 6 batteries.



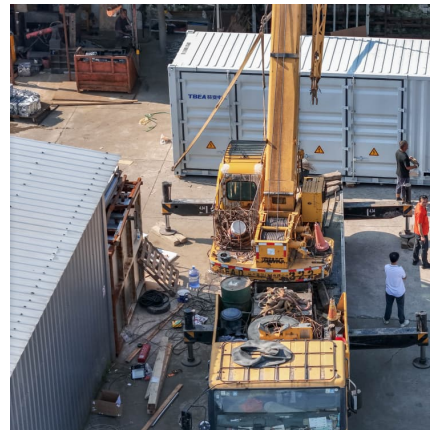
### **Connecting battery through bus bar? , DIY Solar Power Forum**

Is it okay to connect my solar charge controller, my inverter, and my battery to a bus bar? Most of the diagrams I see connect the charge controller and inverter directly to the ...



### **Caravan Solar Upgrade**

The photo is how it is now - I want the high current connections done better better - ie 240v charging, solar charging and alternator charging as per diagram and monitored ...



## **Contact Us**

---

For catalog requests, pricing, or partnerships, please visit:  
<https://conrad.edu.pl>