

# Citizen solar battery life





## Overview

---

Their solar cells effectively convert light into energy, offering a battery life of up to seven years. Regular exposure to light and maintenance every 3 to 5 years greatly enhance their accuracy and longevity.

Their solar cells effectively convert light into energy, offering a battery life of up to seven years. Regular exposure to light and maintenance every 3 to 5 years greatly enhance their accuracy and longevity.

According to Citizen Europe, laboratory tests showed that after 20 years the secondary battery retains a power storage capacity of 80% of its initial capacity. Newer Citizen claims state the rechargeable/secondary batteries will last up to 40 years and that it is highly unusual for these batteries.

Their solar cells effectively convert light into energy, offering a battery life of up to seven years. Regular exposure to light and maintenance every 3 to 5 years greatly enhance their accuracy and longevity. By avoiding prolonged darkness and ensuring timely servicing, these watches can sustain.

Eco-Drive is a proprietary CITIZEN technology that converts any kind of light, from bright sunshine to dim indoor lighting, into the energy necessary to power a watch. It runs for over six months off a single full charge. CITIZEN released the world's first light-powered analogue watch in 1976. As a.

The battery life of a Citizen watch varies depending on the model and usage. However, most Citizen watches have a battery life of at least two years. Some models, such as the Eco-Drive watches, have rechargeable batteries that can last for up to 20 years. How do I know what model my Citizen watch.

The lifespan of a Citizen Eco-Drive watch can vary depending on the specific model and how it is used. Citizen Eco-Drive watches use a rechargeable lithium-ion battery that can be recharged multiple times, which helps to extend the overall lifespan of the watch. Many Eco-Drive watches also have a.

The longevity of an Eco-Drive watch is impressive. With proper care, these watches can last for many years. Citizen designs Eco-Drive watches to



withstand various conditions. However, owners should regularly maintain their watches to ensure optimal performance. A simple maintenance routine includes. How long does a citizen watch battery last?

These watches do not require regular battery replacements and can be recharged by exposure to any light source. The battery in an Eco-Drive watch can last for up to 20 years before needing to be replaced. In conclusion, the Citizen Watch Battery Chart is a useful resource for anyone who owns a Citizen watch.

How long does a Citizen Eco-Drive Battery last?

A typical Eco-Drive battery lasts around 5-10 years, depending on factors like light exposure and usage. However, over time, the battery may lose its ability to hold a charge and may require replacement. How can I extend the life of my Citizen Eco-Drive battery?

.

Does Citizen Eco-Drive have a battery?

You can also consult your watch's user manual or contact Citizen's customer service for assistance. What kind of battery is in Citizen Eco-Drive?

Citizen Eco-Drive watches use a rechargeable lithium -ion battery that is powered by light. These watches do not require regular battery replacements and can be recharged by exposure to any light source.

Can the battery in a Citizen Eco-Drive watch be replaced?

Yes, the battery in a Citizen Eco-Drive watch can be replaced, but it is not a traditional battery replacement process. Citizen Eco-Drive watches use a rechargeable solar-powered battery that can last for many years.

How long do Citizen Watches last?

However, most Citizen watches have a battery life of at least two years. Some models, such as the Eco-Drive watches, have rechargeable batteries that can last for up to 20 years. How do I know what model my Citizen watch is?

To identify your Citizen watch model, you can look for the model number on the back of the watch.



How do I know if my Citizen Watch needs a battery?

To find out what battery your Citizen watch requires, you can consult the Citizen Watch Battery Chart. This chart includes the battery type for each model, such as SR920SW or SR626SW. You can also find this information in your watch's user manual or by contacting Citizen's customer service. What is the battery life of Citizen watch?



## Citizen solar battery life

---



### [Citizen Watch Battery Chart , Battery Tools](#)

The lifespan of a Citizen Eco-Drive watch can vary depending on the specific model and how it is used. Citizen Eco-Drive watches use a rechargeable lithium-ion battery that can be recharged multiple times, which ...

### [Eco-Drive , CITIZEN Technologies| Citizen Watch\[CITIZEN\]](#)

Enter the 1980s and CITIZEN light-powered watches progressed by leaps and bounds thanks to the appearance of thinner solar cells better suited to generating power from indoor lighting and ...



### [Can a Citizen Eco-Drive Battery Be Replaced?](#)

Citizen Eco-Drive watches use a rechargeable solar-powered battery that can last for many years. The power source is designed to be charged by light, making it a more ...



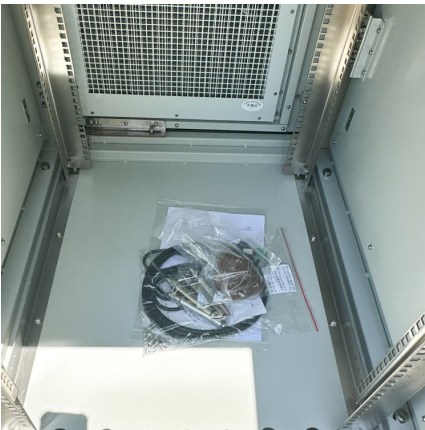
### [How long does Citizen Eco-Drive watch last?](#)

The lifespan of a Citizen Eco-Drive watch can vary depending on the specific model and how it is used. Citizen Eco-Drive watches use a rechargeable lithium-ion battery ...



### Eco-Drive Technology

On a full charge, an Eco-Drive watch runs for months even in darkness with no need for regular battery replacement. It's designed to charge from ordinary everyday light sources like indoor ...



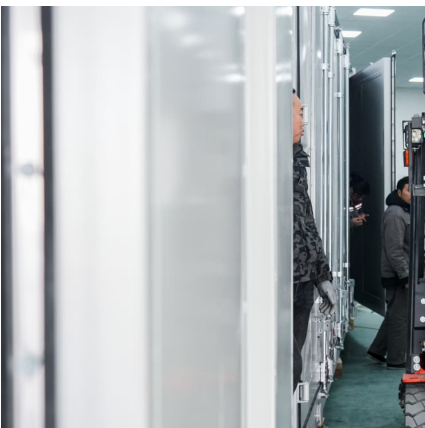
### [How Long Do Citizen Eco Drive Watches Last](#)

Their solar cells effectively convert light into energy, offering a battery life of up to seven years. Regular exposure to light and maintenance every 3 to 5 years greatly enhance their accuracy and longevity.



### [Citizen Watch Battery Chart , Battery Tools](#)

If you own a Citizen watch, you may be wondering what kind of battery it needs and how long it will last. Fortunately, Citizen has created a helpful chart that outlines the battery type and life ...





### What's the lifespan of Citizen Eco-Drive solar batteries?

I love the solar powered Eco-Drive watches, but I'm curious if somebody has had one long enough that the battery died or lost a significant amount of its charge capacity.



### Do Citizen Eco-Drive Watches Need a Battery? Explore Their ...

Eco-Drive watches use solar energy converted to electrical energy, so inadequate exposure to light can lead to battery exhaustion. The batteries generally last for ...

### [How Long Do Citizen Eco Drive Watches Last](#)

Their solar cells effectively convert light into energy, offering a battery life of up to seven years. Regular exposure to light and maintenance every 3 to 5 years greatly enhance their accuracy ...



### How Long Do Citizen Watches Last

To sum up, your Citizen watch, powered by Eco-Drive technology, can last a remarkable 10 years or more on a single battery charge. This longevity, combined with its solar charging ...



### Does A Citizen Watch Need A Battery? Eco-Drive Longevity And

Solar cells in Citizen watches enhance battery life significantly by harnessing sunlight to recharge the watch's internal battery. This feature reduces the frequency of battery ...



### Eco-Drive Technology

??4%??· On a full charge, an Eco-Drive watch runs for months even in darkness with no need for regular battery replacement. It's designed to charge from ordinary everyday light sources like indoor fluorescent lighting and desk ...

## Contact Us

---

For catalog requests, pricing, or partnerships, please visit:  
<https://conrad.edu.pl>