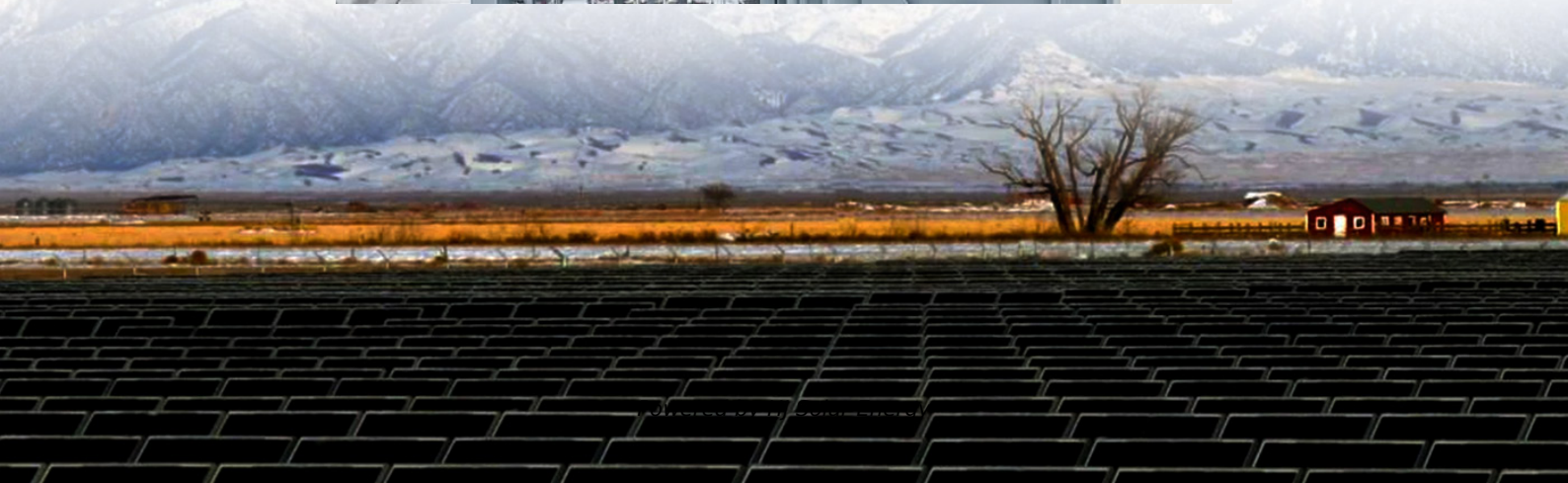


# Charge two separate battery arrays with one midnite solar classic





## Overview

---

Does Midnite solar have a charge controller user's manual?

Notice of Copyright MidNite Solar's Classic charge controller User's Manual  
Copyright c 2010 all rights reserved. MidNite Solar Inc. reserves the right to revise this document and to periodically make changes to the content hereof without obligation or organization of such revisions or changes unless required to do so by prior arrangement.

What is a Midnite classic charge controller?

The MidNite Classic charge controller is unique in its ability to be used for a great variety of DC input sources. The Classic is designed to regulate DC input from PV, and Approved Hydro and Wind turbines for other DC sources please contact MidNite Solar tech support.

Does Midnite solar warranty third-party inverter components?

MidNite Solar will not warranty third-party inverter components used in MidNites pre-wired systems. Those components are warranted by the original manufacturer. MidNite Solar offers an extended warranty for all the Classic MPPT charge controllers.

What happens if two solar arrays are paralleled?

When two or more Classics are paralleled onto one SINGLE DC Source a blocking diode must be used between each Classic and the input source to isolate each Classic from the other ones. With Solar arrays you would have one array per Classic, this only applies to larger wind or hydro turbines.

What volts can a Midnite classic control?

The Classic is designed to regulate DC input from PV, and Approved Hydro and Wind turbines for other DC sources please contact MidNite Solar tech support. The Classic 150, 200 and 250 are designed to work with 12, 24, 36, 48, 60 and 72 volt battery banks. The Classic can be installed stand alone or as a multi-



unit networked installation.

Are Midnite solar breaker rated for continuous duty?

The NEC requires 1.56 times short circuit current (Isc) for PV over-current protection. This is reduced to 1.25 times when using a breaker rated for continuous duty. All MidNite Solar breakers are rated for continuous duty (100% rating). No de-rating is required for the input or output breakers when using MidNite Solar DC breakers.



## Charge two separate battery arrays with one midnite solar classic

---



[MidNite Solar Classic and Classic SL Manual, Manualzz](#)

Read the MidNite Solar Classic and Classic SL Manual online to learn about installation, programming, and troubleshooting. This comprehensive guide covers both the standard and ...

### **DANGER OF DEATH TO YOUR CLASSIC!**

This bus bar is sufficient for two charge controllers; if you need three or more, then you need to look at the best way to handle the amperage. A dual Radian, for example, is actually four ...



### **Installing 2 Classics on same system (separate solar array)**

If you just use one whizbang then you have Aux 2 available on the second Classic - which is nice since then you can do pwm stuff with it that isn't available on Aux 1 .

### **MidNite Solar Classic Charge Controller Manual , AI Chat & PDF ...**

Access the MidNite Solar Classic 150, 200, 250, 250KS, LITE series owner's manual. Get instant answers with AI chat and download the full PDF



for comprehensive solar charge controller ...

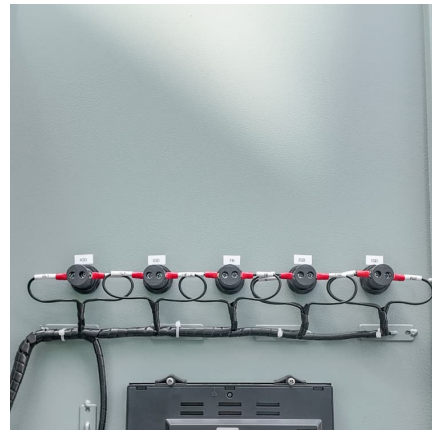


### [Getting 2 Midnite Classics 150 to work together](#)

One can have as many independent charging sources running concurrently as they like provided they are programmed properly for the voltage of one's battery bank.

### **MidNite Solar Inc.**

Six months prior to the end of the warranty period customers can ship their Classic back to MidNite Solar with a check for \$147 dollars plus shipping and we will replace any wearable ...



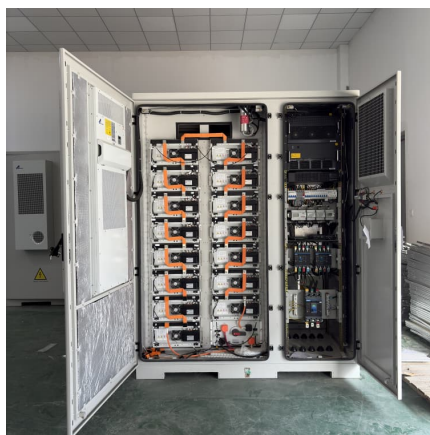
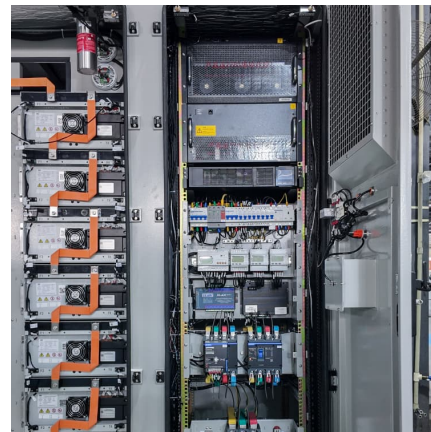
### **wiring multiple charge controllers**

With Solar arrays you would have one array per Classic, this only applies to larger wind or hydro turbines. I am going to wire one array of 12 panels to each charge controller.



???-UCLA????????2019???????????????

Core-Shell ZnO@SnO2 Nanoparticles for Efficient Inorganic Perovskite Solar Cells. DOI: 10.1021/jacs.9b06796 https://pubs.acs.org/doi/abs/10.1021/jacs.9b06796 ????



[Can two Midnite Solar Classic 150 be used in parallel?](#)

I'm helping a friend with his off-grid plans and he wants to use two (2) Midnite Classic 150 in parallel to charge a common bank. I've scoured the web and found instances of attempts on it ...

[MidNite Solar Classic Owner's Manual Firmware rev 1933](#)

When two or more Classics are paralleled onto one SINGLE DC Source a blocking diode must be used between each Classic and the input source to isolate each Classic from the other ones.



[???? , ??????????:ChargePoint?Blink Charging ...](#)

?????? ??????????????,? ?????? ? ???????  
??,?????????????,?????????????,??????????  
?????????????,??2022?4 ...



### adding second Midnite classic 200

I already confirmed VOC is sufficient for the 4series 1kw array and amperage is just fine at ~13. Is it as simple as wiring the second midnite SCC as a slave, adding comm ...



### Multiple Midnite Classic 250

Are you asking if you can hook up two different midnight classic 250 (and solar panels) to the same single battery pack in the trailer? And then asking if would be better to ...

## Contact Us

For catalog requests, pricing, or partnerships, please visit:  
<https://conrad.edu.pl>