

Charge a battery using the load side of solar controller





Overview

The load side of the solar charge controller can be connected to a DC power device with the same rated operating voltage as the rated voltage of the battery, and the controller supplies power to the load with the battery voltage.

The load side of the solar charge controller can be connected to a DC power device with the same rated operating voltage as the rated voltage of the battery, and the controller supplies power to the load with the battery voltage.

All you need to know about the load section on a solar charge controller. ☺☺☺☺ Please consider liking & subscribing ☺☺☺☺ :) Thanks for watching and have a good one! 📌 ☺☺ Products mentioned in this video (affiliate links): ⚡Solar Charge Controller: <https://amzn.to>. more All you need to know about.

A load output terminal is a connection point on your charge controller designed to power devices directly from your charge controller itself. Often marked with a light bulb icon, it might seem like the perfect place to connect all your lights and gadgets. But is it really?

Let's dive deeper. How.

I wish to charge a second lithium bms protected battery when the primary mppt 75-15 charge voltage gets to near full battery voltage. I would let the secondary battery bms control charging it's battery. I'm trying not to use an Orion or other dc/dc converter. I searched but didn't find a definitive.

Should I connect the 12v load to the mppt charger controller or the battery directly?

Or does it not matter which?

On a boat usually. Your loads should connect to the battery. Your battery is the heart of the system, everything connects to it. Your battery is capable of providing the power whenever.



It's a typical 20 A PWM charge controller so it has the solar input, battery output, and it has an unused, programmable output for a load. Has anyone tried using this output to charge a second battery?

Thinking I could set it to 13.8 V and programming it to cut off at 13 V just to keep this battery.

If I connect my load to the controller it doesn't seem to feed the battery & load separately it all seems interconnected so as the battery voltage rises as it's charging so the load voltage rises?

Everything seems the same whether I connect my load to my CC or just connect load directly to my battery. Can I connect a second leisure battery to a solar charge controller?

While it's technically possible to connect a second leisure battery to the load terminal of a solar charge controller, it's generally not recommended. The main reason is the issue of charge profile mismatch. The load terminal follows the charge profile of the main battery connected to the controller's battery terminals.

How do I connect a solar charge controller?

connect the load to the solar charge controller load port Connect the Solar Array connect the solar array after the battery has been connected Connect the inverter to solar battery the inverter is only allowed to connect to the solar battery. MPPT vs PWM Solar Charge Controller Comparison.

How much power does a solar controller handle?

The load terminal will provide power to your DC loads directly through your battery, depending on your battery's voltage. However, you are limited to the amperage of the solar controller, so if your controller is 20A, then it will not handle more than 20A of load.

How does a solar controller work?

The load terminal of the solar controller can be connected to a DC power source that has the same operating voltage as the rated voltage of the battery, and the controller will supply power to the load at the battery voltage. Connect the load's positive and negative terminals to the controller's load terminals.



Do solar panels need a charge controller?

A battery is a fragile thing and high voltage of solar panels can easily destroy it. A charge controller acts as a safety barrier between panels and a battery and should be a part of every home solar panel installation. In this article, we'll explain how to wire together solar panels, a regulator and a battery. But what does a battery fear?

.

What is a solar controller load terminal?

On the other hand, this terminal has an advantage over connecting your DC loads directly to the battery. The solar controller load terminal, also called LVD or low voltage disconnect, will automatically disconnect your loads from the battery if its voltage drops to a certain number, protecting the battery from being undercharged.



Charge a battery using the load side of solar controller



[How to Install the Solar Charge Controller?.. inverter](#)

The load side of the solar charge controller can be connected to a DC power device with the same rated operating voltage as the rated voltage of the battery, and the ...

[Wiring solar panels, charge controller and battery ...](#)

A charge controller acts as a safety barrier between panels and a battery and should be a part of every home solar panel installation. In this article, we'll explain how to wire together solar panels, a regulator and a battery.



[Solar controller: using load output to charge a separate](#)

It should work, but use a diode to ensure that the current flows only from the controller towards the battery and not the opposite. The controller might already have one in the load output, but ...

[Load Terminal in Solar Controller ...](#)

The solar controller load terminal, also called LVD or low voltage disconnect, will automatically disconnect your loads from the battery if its voltage drops to a certain number, protecting the

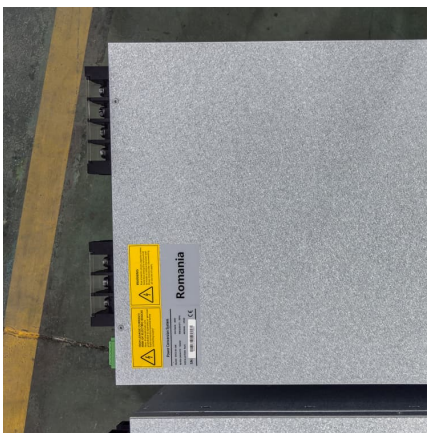


battery from being undercharged.



Wiring solar panels, charge controller and battery together

A charge controller acts as a safety barrier between panels and a battery and should be a part of every home solar panel installation. In this article, we'll explain how to wire ...



Everything About the Load Output Terminal on Your Controller

Have you ever stared at your solar charge controller, wondering if you should connect your devices to that mysterious "load" terminal? You're not alone. We get asked this ...



Load Terminal in Solar Controller (Usage, Importance, more...)

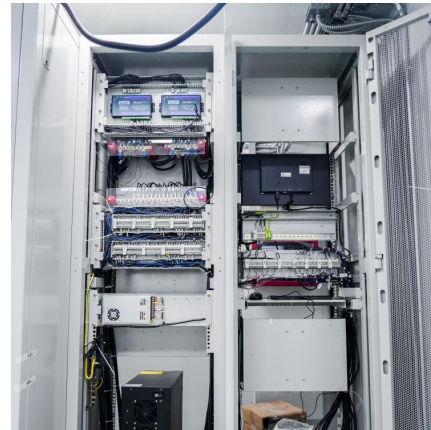
The solar controller load terminal, also called LVD or low voltage disconnect, will automatically disconnect your loads from the battery if its voltage drops to a certain number, ...





[Charging battery via solar controller load output?](#)

The Load Output is switched on and off to the main battery connected to the Battery terminals. This means that the Load Output will always follow the charge profile of the ...



[Do I connect a load to charge controller or battery?](#)

Your battery is capable of providing the power whenever you need it. If you connected a load to the charge controller, it would only provide whatever power was actively ...

[How to Install the Solar Charge Controller?., inverter](#)

The load side of the solar charge controller can be connected to a DC power device with the same rated operating voltage as the rated voltage of the battery, and the controller supplies power to the load with the battery voltage.



[Everything About the Load Output Terminal on Your ...](#)

Have you ever stared at your solar charge controller, wondering if you should connect your devices to that mysterious "load" terminal? You're not alone. We get asked this question a lot! In this article, we'll demystify load ...



[How to Setup the Load on a Solar Charge Controller](#)

All you need to know about the load section on a solar charge controller. ?? Please consider liking & subscribing ?? :) Thanks for watching and have a good one! ? Products mentioned



Contact Us

For catalog requests, pricing, or partnerships, please visit:
<https://conrad.edu.pl>