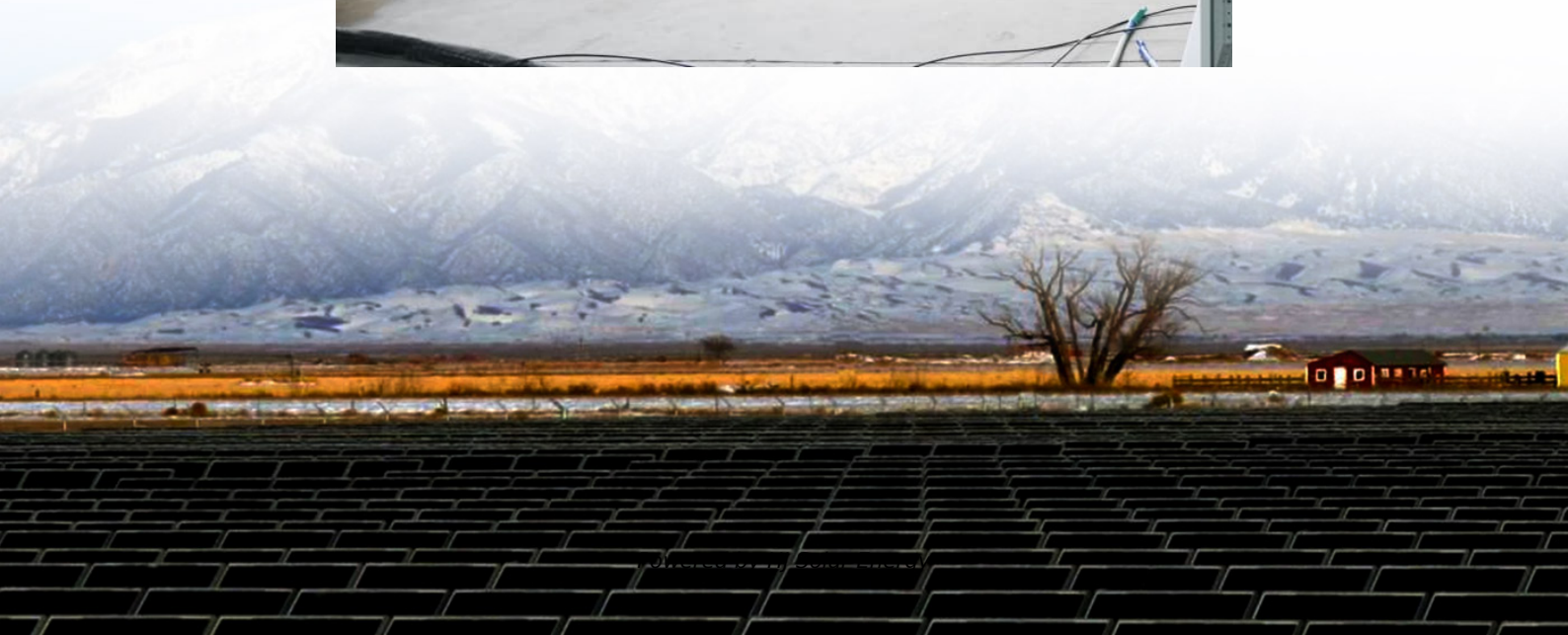
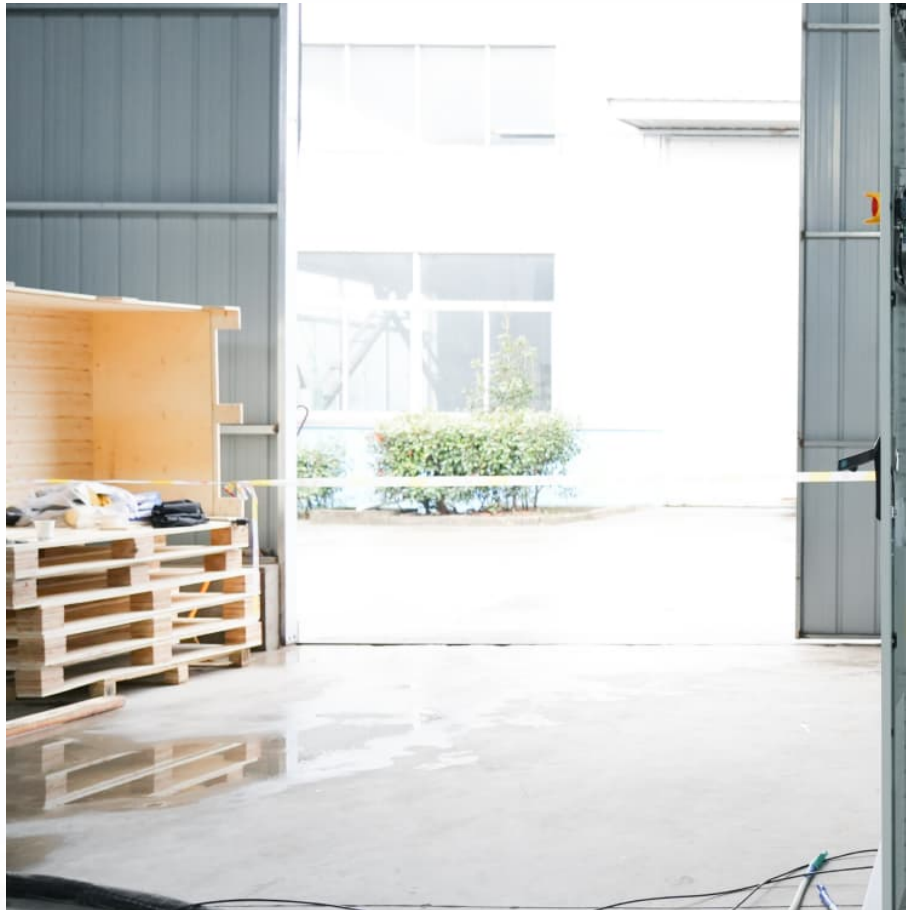


Bose solo remote battery replacement





Overview

2032 Battery you need - <https://amzn.to/4mNyjcn> Here is a quick and easy demonstration video on how to replace the battery in your BOSE remote. All you need is your replacement 2032 battery and a coin. I'm using a nickel but any coin will work. Use that to.

2032 Battery you need - <https://amzn.to/4mNyjcn> Here is a quick and easy demonstration video on how to replace the battery in your BOSE remote. All you need is your replacement 2032 battery and a coin. I'm using a nickel but any coin will work. Use that to.

2032 Battery you need - <https://amzn.to/4mNyjcn> Here is a quick and easy demonstration video on how to replace the battery in your BOSE remote. All you need is your replacement 2032 battery and a coin. I'm using a nickel but any coin will work. Use that to remove the back cover. The new battery.

This quick video shows you how to change the battery on your BOSE SOLO sound bar remote control.more This quick video shows you how to change the battery on your BOSE SOLO sound bar remote control.

☐☐ Get up to \$300 credit by trading in your Bose product! Not your product?

Was this helpful?

Need Help?

Need further assistance?

We're here to help.

Check each product page for other buying options. Duracell 2032 Lithium Battery. 4 Count Pack. Child Safety Features. Compatible with Apple AirTag, Key Fob, and other devices. CR2032 3V Cell. 2032 Battery, Lithium Coin Need help?

.



The following guide will help you replace the batteries of your Bose Solo 5 Soundbar Remote. A good time to replace both batteries is when you notice the remote control not operating how it should or it seems to be slower and requiring multiple attempts to use the controls. We recommend you use.

Should your Bose product need repair or replacement (for any reason) we'll show you the options available to you, and help you get everything arranged. Tailored support Do you need to solve an issue with your Bose product or learn how to use specific features?

Begin our guided troubleshooting to. How do I replace my Bose solo 5 remote battery?

To replace the batteries in your Bose Solo 5 remote control, you will need two AA batteries. Open the battery compartment cover on the back of the remote by applying pressure with fingers and sliding downward. We recommend using Alkaline batteries because they will last longer and provide more energy.

How do you replace a battery in a remote?

To replace the batteries in a Bose Solo 5 Sound Bar remote, open the battery compartment cover on the back of the remote by applying pressure with fingers and sliding downward. Carefully remove both AA batteries. If you find any battery acid corrosion in the wells, clean it with a cotton swab or a dull pointed tool. Insert two AA (IEC-LR6) 1.5V batteries or the equivalent.

When should I replace my Remote Control batteries?

Replace the batteries in your Bose Solo 5 Sound Bar Remote when you notice it not operating correctly or requiring multiple attempts to use the controls. Both batteries should be replaced at this time. We recommend using Alkaline batteries for longer battery life and more energy.

How many batteries do I need for the soundbar remote control?

1 Lithium Metal batteries required. This fits your . Make sure this fits by entering your model number. ►► Compatibility ► This soundbar remote control compatible with CineMate Series II & IIGS, for Bose CineMate 1SR, for Bose CineMate 10 & Cinemate 15, for Bose Solo 5, Solo 10 & Solo 15 sound bar.

How do I contact Bose technical support?



If you need further assistance, our technical support is available via live chat or phone. Need Help?

Need further assistance?

We're here to help. Use the guided troubleshooter tool to help troubleshoot your Bose product or associated app, as well as find service and repair resources for your Bose product.



Bose solo remote battery replacement



Replacement Remote Control Compatible with Bose Solo 5 10 15 ...

No Setup Required Easy to use, CR2025 battery included, just need to put out the plastic piece, this replacement soundbar remote control will work immediately

[Bose Solo 5 Sound Bar Remote Batteries ...](#)

The following guide will help you replace the batteries of your Bose Solo 5 Soundbar Remote. A good time to replace both batteries is when you notice the remote control not operating how it should or it seems to be slower ...



New Remote Control Replacement for Bose Solo 5 10 15 Series ...

?Packing List?Bose remote control replacement comes packaged as a single unit, including the battery, making it easy to use and install. Utilizing infrared technology, it ...

[Replacement Remote Control Compatible with Bose ...](#)

No Setup Required Easy to use, CR2025 battery included, just need to put out the plastic piece, this replacement soundbar remote control will



work immediately



Amazon : Battery For Bose Remote

Replacement Remote Control Compatible with Bose Solo 5 10 15 Sound Bar, Replace for Bose Solo Cinemate Series II IIGS 1SR 10 & 15 Remote with CR2025 Battery 400+ bought in past ...



[Replacing the batteries in your remote control](#)

Contact Us Customer Care Troubleshooting Repair & Replacement Order Tracking My Bose Sign In / Register Register Your Product Contact Us Our company About Us Find a Store ESG ...



[Bose Solo 5 Sound Bar Remote Batteries Replacement](#)

The following guide will help you replace the batteries of your Bose Solo 5 Soundbar Remote. A good time to replace both batteries is when you notice the remote control ...





[New Remote Control Replacement for Bose Solo 5 10...](#)

?Packing List?Bose remote control replacement comes packaged as a single unit, including the battery, making it easy to use and install. Utilizing infrared technology, it requires no pairing or programming--simply ...



Bose Solo 5 10 15 series II TV sound system Remote Control Battery

All you need is your replacement 2032 battery and a coin. I'm using a nickel but any coin will work. Use that to remove the back cover. The new battery will be installed + side facing outward.

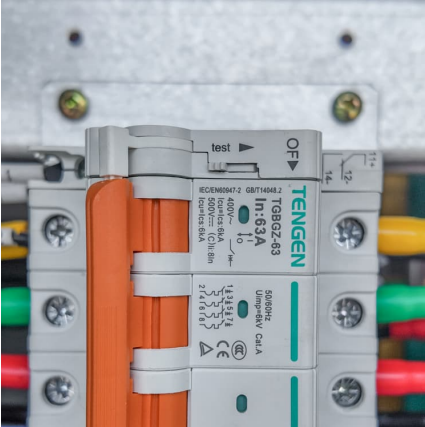
[Replacing the batteries in your remote control](#)

Your remote control works on battery power. When the batteries weaken, the remote can stop working or work intermittently. Learn how to open the battery compartment to remove and ...



[Amazon : Bose Solo Remote Replacement](#)

New Replacement Remote Control for Bose TV Speaker and Solo Soundbar Series II - Compatible with Bose Solo 5,10,15 Sound Systems (Models 418775, 431974, 732522, 845194, ...



[Bose Solo 5 10 15 series II TV sound system Remote ...](#)

All you need is your replacement 2032 battery and a coin. I'm using a nickel but any coin will work. Use that to remove the back cover. The new battery will be installed + side facing outward.



Contact Us

For catalog requests, pricing, or partnerships, please visit:
<https://conrad.edu.pl>