

Best solar controller for a sla battery





Overview

Detailed reviews and a buying guide for the 9 best solar charge controllers, ensuring efficient and reliable solar energy management.

Detailed reviews and a buying guide for the 9 best solar charge controllers, ensuring efficient and reliable solar energy management.

One of the most essential components of the solar system is its charge controller. It regulates the flow of solar energy from the panels to your batteries, ensuring optimal charging and protecting the system from overcharging and discharging. Thus, selecting a good charge controller ensures maximum.

□ Universal Compatibility □Adopts advanced digital PWM control comes with different algorithms to achieve high charging efficiency. Compatible with multiple kinds of batteries that were commonly used, Suitable for RV, home small solar system, trailer and camper. Support a maximum of 340W solar.

This solar charger controller (Auto Voltage Detection) is designed for home solar power system with a solar panel rated < 170W for 12V/24 lead acid or 12.8V/25.6V LiFePO4 batteries rated <120W. It is important to include this controller in your solar power system due to following advantages: Auto.

- Double crest or multi crest tracing technique design, used when the solar panel is under shadow or part of the solar panel is damaged. Multi crest will turn up in I-V curve, the controller can still trace the Max Power point.
- Built-in maximum power point tracking algorithm which could promote.

The Bioenno Power 12V/24V, 20A Solar Charge Controller (Model SC-122420JUD) is a high-performance, intelligent controller designed to manage solar input and provide regulated output for charging LiFePO4, AGM, SLA, and Gel battery systems. Automatically detecting 12V or 24V battery configurations.

The solar controller is a PWM unit, this type will only allow the panel current into the batteries not the panel power. The 3 panels are, 36volts 5.5 amps,18



volts 8 amps, 24 volts 8 amps. Thus the most you can expect is $5.5 + 8 + 8 = 21.5$ amps. The controller is rated at 40 amps. PWM40, the 40 is.



Best solar controller for a sla battery



9 Best Solar Charge Controllers - Reviews & Buying Guide

Detailed reviews and a buying guide for the 9 best solar charge controllers, ensuring efficient and reliable solar energy management.

[Amazon : LiTime 12V/24V 20A PWM Controller, Solar ...](#)

No need to get out there and operate the solar charge controller, get cozy and operate everything indoors. A safer and easier way to keep everything under control, suitable for RV, home solar ...



[12V/24V 20A Solar Charge Controller for LiFePO4](#)

The Bioenno Power 12V/24V, 20A Solar Charge Controller (Model SC-122420JUD) is a high-performance, intelligent controller designed to manage solar input and provide regulated output for charging LiFePO4, AGM, SLA, and ...

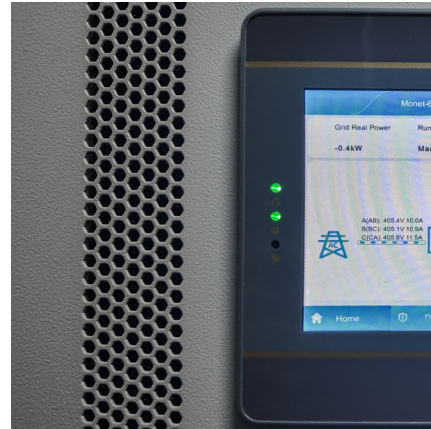


9 Best Solar Charge Controllers - Reviews & Buying Guide

No need to get out there and operate the solar charge controller, get cozy and operate everything indoors. A safer and easier way to



keep everything under control, suitable for RV, home solar ...

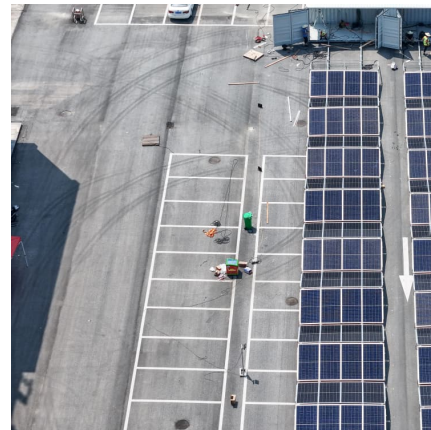


Charge Controller (120W, 12V/24V Auto Detection, 10A Rate) for SLA ...

Solar Charge Controller (120W, 12V/24V Auto Detection, 10A Rate) for SLA or LFP Battery (#6468) Have a product question? Ask us

[Best Charge Controller for mixed battery types](#)

I am trying to purchase a charge controller for a system that has two different batteries. One is a sealed lead-acid battery and one is a deep cycle Gel battery.



[Choosing the Right Solar Charge Controller for ...](#)

In this guide, we'll explore what solar charge controllers do, the differences between Pulse Width Modulation (PWM) and Maximum Power Point Tracking (MPPT) controllers, and how to choose the best one for your system.



RP440 MPPT Solar Charge Controller 40A for Lead Acid, SLA...

Power your RevoPower system with our premium 12V Lithium LiFePO4 batteries, designed to meet the energy demands of homes, workshops, and off-grid systems. These batteries offer ...



30A Flush Mount Solar Charge Controller for Lead Acid, SLA...

This flush mount type solar charge controller is mainly designed to be used for solar power system in RV, Van, Caravan or system cabinet installation, you also can use it in your own ...

[30A Flush Mount Solar Charge Controller for Lead ...](#)

This flush mount type solar charge controller is mainly designed to be used for solar power system in RV, Van, Caravan or system cabinet installation, you also can use it in your own unique application.



Charge Controller (120W, 12V/24V Auto Detection, 10A Rate) for ...

Solar Charge Controller (120W, 12V/24V Auto Detection, 10A Rate) for SLA or LFP Battery (#6468) Have a product question? Ask us



Choosing the Right Solar Charge Controller for Optimal Battery

In this guide, we'll explore what solar charge controllers do, the differences between Pulse Width Modulation (PWM) and Maximum Power Point Tracking (MPPT) ...



[10 Best Solar Charge Controllers 2024](#)

Best Solar Charge Controllers including Victron, Morningstar, and EPeveer. Comparing Maximum Charge Current, Battery Bank Voltage and Maximum Input Power.

12V/24V 20A Solar Charge Controller for LiFePO4 , Bioenno Power

The Bioenno Power 12V/24V, 20A Solar Charge Controller (Model SC-122420JUD) is a high-performance, intelligent controller designed to manage solar input and provide regulated output ...





[RP440 MPPT Solar Charge Controller 40A for Lead...](#)

Power your RevoPower system with our premium 12V Lithium LiFePO4 batteries, designed to meet the energy demands of homes, workshops, and off-grid systems. These batteries offer unmatched reliability, efficiency, and long-term ...

Contact Us

For catalog requests, pricing, or partnerships, please visit:
<https://conrad.edu.pl>