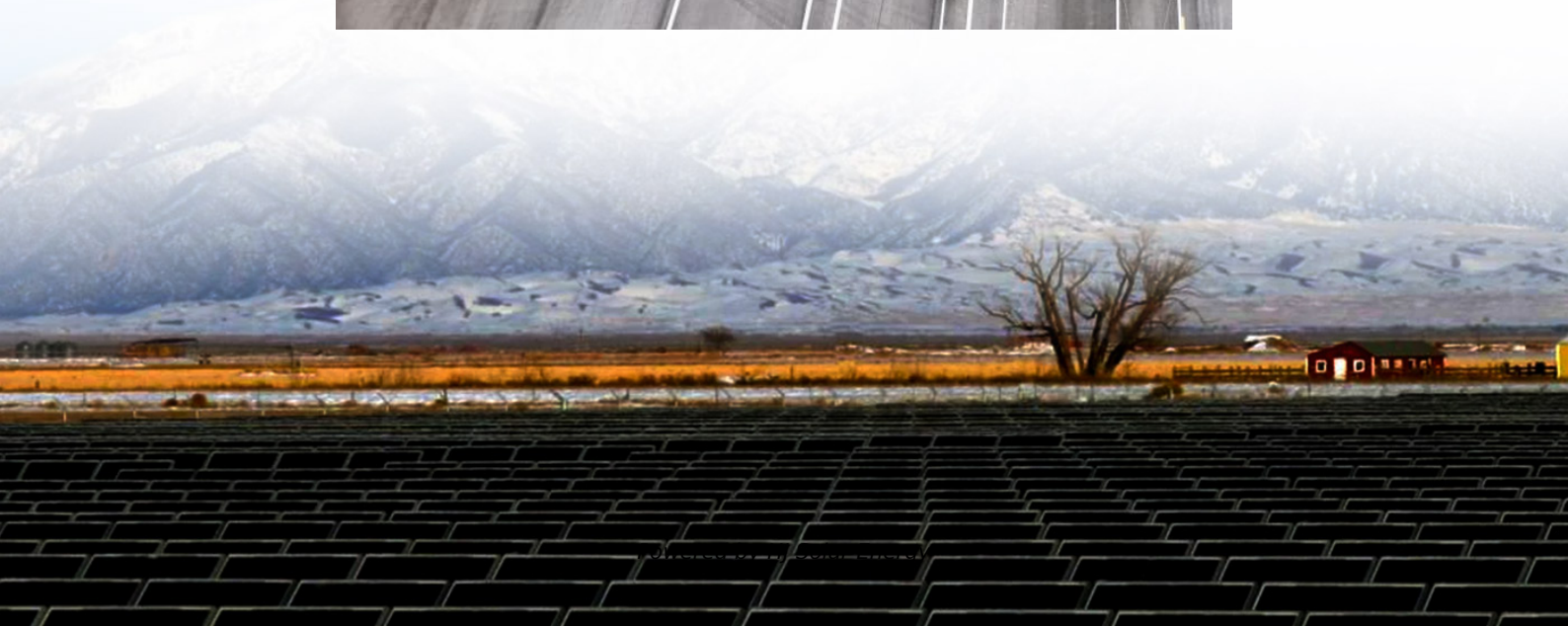


# Battery tender solid red light





## Overview

---

The LED lights on your Battery Tender indicate the status of the charging process. Here's what each light means: Solid red light: Your Battery Tender is not charging. Flashing green light: Your Battery Tender is charging your battery.

The LED lights on your Battery Tender indicate the status of the charging process. Here's what each light means: Solid red light: Your Battery Tender is not charging. Flashing green light: Your Battery Tender is charging your battery.

Read on to learn about the different types of light indicators you may see from your Battery Tender charger and how to troubleshoot them. Below is a photo that shows what the lights on your Battery Tender charger are trying to tell you. Use this as a quick-hit guide for some of your most common.

When we connect a Battery Tender Junior to a battery, observing a solid red light indicates that the device is properly engaged in charging. The red light is a clear signal that the Battery Tender Junior has established a correct connection to the battery and is actively pushing current to.

Battery voltage is less than 3 volts. (A 12 volt battery may not recover from a discharge this deep.) Disconnect all loads from battery (or battery from vehicle), then reattach Battery Tender PLUS. Wait no more than 3 seconds for solid red light. Red light keeps flashing. Charger is not properly.

Before you can tell if your Battery Tender is charging, you need to check if it is working correctly. To test if your Battery Tender is working, follow these steps: Plug your Battery Tender into an outlet. Connect the alligator clips to your battery terminals. Check the Battery Tender's LED light.

My battery tender red light will not change to green, and the power brick is quite warm. This is after ~36 hours on the bike. Seems like the bike is pulling current, but the tender won't acknowledge that the battery is charged. Some observations. - My battery doesn't go dead, even after two.



If you suspect that your battery tender is bad, look out for signs like a slow or incomplete charge, a blinking indicator light, or a swollen or leaking battery. Keeping an eye on these indicators can help you prevent potential battery problems. A battery tender plays a crucial role in maintaining. What does a red light on a battery tender mean?

A red light means charging is in progress, while a green light indicates that the battery is fully charged and the charger is in float mode. Additionally, you can use a multimeter to check the battery's voltage during the charging process. What should I do if my Battery Tender is not showing any lights?

.

What does a battery tender light mean?

Solid red light: Your Battery Tender is not charging. Flashing green light: Your Battery Tender is charging your battery. Solid green light: Your Battery Tender has finished charging your battery and is now maintaining it. Can you leave a Battery Tender on all the time?

Yes, you can leave a Battery Tender on all the time.

What does a green light mean on a battery tender?

Also, if the green light keeps flashing while the red light stays on, it indicates that the battery is more than 80% charged and is ready to use. You can also wait a few more minutes for the battery to be fully charged, as indicated by the green light turning solid green. How Long Does It Take for the Battery Tender to Turn Green?

.

How do I know if my Battery Tender is working?

To test if your Battery Tender is working, follow these steps: Plug your Battery Tender into an outlet. Connect the alligator clips to your battery terminals. Check the Battery Tender's LED light status. What do the lights mean on my Battery Tender?

The LED lights on your Battery Tender indicate the status of the charging process.

How many volts does a battery read before attaching a tender?



The battery reads 12.7 volts before attaching the tender. I have a battery on the tender right now. The red light is lit solid. It's been on there several hours. I'm not very electrically inclined, but I would think that 12.7 volts is more than 80% charged and the red light should at least be flashing, if not solid green.

Why is my battery tender flashing red?

The battery tender is faulty: Sometimes, the problem is not with the vehicle, engine, or charger. The red light on your battery tender may flash because the device is faulty. When this happens, the battery tender will not charge the battery correctly. The best way to fix this problem is by repairing the battery tender or purchasing a new one.



## Battery tender solid red light

---



### **Battery Tender (Jr.), killed my battery but I still like their products**

So I have owned and used this one Battery Tender Jr. for years and years on at least 7 different motorcycles. So here is what happened I plugged up after my last ride on that ...

### **Battery maintainer only flashes**

On my Harley brand tender the light is steady yellow when first plugged in and charging, then as it gets close to a full charge the light starts to flash yellow, then once fully ...



### **Battery Tender Jr.**

My H-D battery tender doesn't start off red when first plugged in, it starts off yellow then in about 5 minutes turns solid green. Maybe I have a different model tender than you, but I ...

### [How Do I Know If My Battery Tender Is Bad . Psycho ...](#)

If you suspect that your battery tender is bad, look out for signs like a slow or incomplete charge, a blinking indicator light, or a swollen or



leaking battery.



### Battery Tender weird flashing

That's when the light at the tender started flashing red-green as well. Took the battery out of my bike and into the house - it continued to flash. Waited an hour to let the ...



### Demystifying the Light Show: A Gamer's Guide to Battery Tender ...

When you connect your battery to the tender and see that red light glowing steady, it means charging is happening. Consider red the universal color for "charging in ...



### [How To Tell If Battery Tender Is Charging](#)

A red light means charging is in progress, while a green light indicates that the battery is fully charged and the charger is in float mode. Additionally, you can use a multimeter ...



### Battery Tender issue

I hook my 2017 street glide up to genuine Harley tender over night to charge lead acid genuine Harley battery. After a full night tender is solid green which I thought ...



### Battery Tender

My battery tender red light will not change to green, and the power brick is quite warm. This is after ~36 hours on the bike. Seems like the bike is pulling current, but the tender won't ...

### Battery tender issues

Got new fuses and still blinking red light. Got new battery tender and still blinking red light. Instructions say my battery may have less than 3 volts & can't charge or tender ...



### Battery Tender

On occasion I'll see a red light and when I turn off something else connected to the power strip, the light goes green. I also have a lamp that only turns off and on with a human touch, not ...



### [Battery Tender Flashing Red/Green/Yellow/Orange ...](#)

The best way to fix the flashing red light on the battery tender is by connecting your battery to a healthy charger or connecting it to a DC power source with a similar voltage rating.



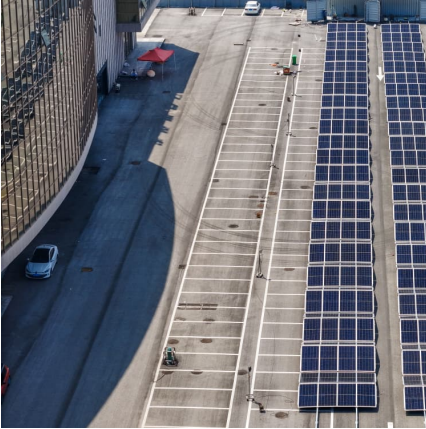
### [Battery Tender Junior Solid Red Light: Understanding ...](#)

When we connect a Battery Tender Junior to a battery, observing a solid red light indicates that the device is properly engaged in charging. The red light is a clear signal that the Battery Tender Junior has ...

### [Battery Tender® Lights and What They All Mean](#)

If the lights still alternate from red to green, there's a chance that the unit itself is experiencing issues. At this point, we recommend reaching out to the Battery Tender customer service team for assistance.





### **How To Tell If Battery Tender Is Charging? , Battery ...**

The Battery Tender may be faulty or not working correctly. To troubleshoot the issue, try connecting the alligator clips to your battery terminals again or try a different battery.

### **Battery Tender Jr acting up?**

From the BT instructions: "RED LIGHT ON STEADY - Whenever the red light is on steady, a battery is connected properly and the charger is charging the battery. The red ...



## **Contact Us**

---

For catalog requests, pricing, or partnerships, please visit:  
<https://conrad.edu.pl>