

Agm battery type b b2 b3 solar controller





Overview

What type of battery is B3?

B3 is lithium iron phosphate battery (4 strings 12.8V) 4. The battery cable should be as short as possible to minimize loss. 5. When installation for the first time, set the battery type according to the type of battery and make sure that the battery has enough voltage so that the controller can recognize the correct battery type.

Which batteries can be regulated by a charge regulator?

6. The charge regulator is only suitable for regulating solar modules. Never connect another charging source to the charge regulator. This controller is suitable for 3 types of batteries, including lead-acid batteries (12V/24V auto), lithium-ion batteries (3 strings of 11.1V lithium batteries).

What are the different types of battery charge controllers?

Different types of batteries like Lithium Iron Phosphate (LIPO), lithium, iron phosphate, lead-acid, and Absorbent Glass Mat (AGM) batteries have different settings. However, there are only two types of charge controllers. 1. MPPT controller or maximum power-point tracking controller 2. PWM controller or pulse width modulation controller.

What is a solar charge controller rated?

It is the maximum number of amperes that your solar charge controller can handle. It is the parameter on the basis of which a solar charge controller is rated. It can be 10A, 20A, 30A, 40A, 50A, 60A, 80A, or 100A. 5. Maximum Charging Current It is the maximum output current of the solar panels or solar arrays.

Are AGMs undercharged?

Here's the thing you should know. AGM's are undercharged by not getting that last 1-percent of charge in. It takes at least 12-16 hours at a float charge of



13.6v to do so to actually finish the charge, before what would be considered long-term float. If you can, take advantage of the AGM's ability to charge with a rate as high as 0.25 to 0.3C.



Agm battery type b b2 b3 solar controller



[Solar Charge Controller Settings Guide](#)

Always refer to the AGM battery manufacturer's recommendations, as these settings can vary based on the specific battery design and capacity. Making the right adjustments ensures the ...

Solar Charge Controller Settings

Install the controller on a well-ventilated and flat surface. While running, the controller will be heated. This controller is suitable for lithium batteries. All kinds of lead ...



[Solar charge controller setting for AGM battery](#)

Just choose "Deep Cycle Sealed" for the battery type and that is all that should be necessary, it will (according to the manual) adjust the parameters itself over a few ...

[PowMr 12V/24V 10A 20A 30A PWM Solar Charge](#)

...

This controller is suitable for 3 types of batteries, including lead-acid batteries (12V/24V auto), lithium-ion batteries (3 strings of 11.1Vlithium



batteries).



PowMr 12V/24V 10A 20A 30A PWM Solar Charge Controller Lithium Battery

This controller is suitable for 3 types of batteries, including lead-acid batteries (12V/24V auto), lithium-ion batteries (3 strings of 11.1V lithium batteries).



Solar charge controller

The very limited instructions talks about a setting called "battery type description" . The description states that a "B1" setting is for lead acid batteries. A "B2" setting is for a ...



Smart digital solar charge controller charging b1 b2 b3 for lithium ...

Key attributes Industry-specific attributes Type MPPT Application Charger Controller, Solar Working Station, Voltage Controller, Solar System Controller





Solar Charge Controller 20A, Intelligent Battery Regulator For ...

Battery types: This updated controller is suitable for all battery types. Make sure to select the correct battery type i.e B1 for lead-acid, B2 for Li-ion, B3 LiFePO.

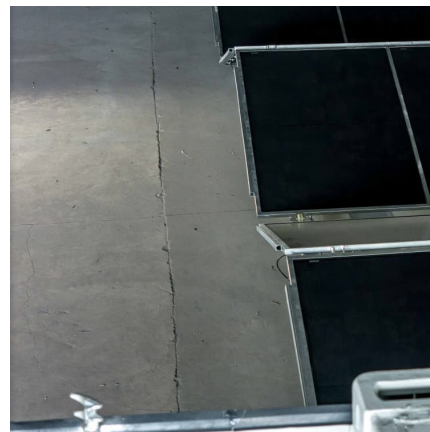


AGM battery type setting

AGM's are notoriously UNDER-charged, especially so in a solar installation where charge levels are not constant like they are with a dedicated AC charger, we want to put ...

Smart digital solar charge controller charging b1 b2 b3 for lithium battery

Key attributes Industry-specific attributes Type MPPT Application Charger Controller, Solar Working Station, Voltage Controller, Solar System Controller



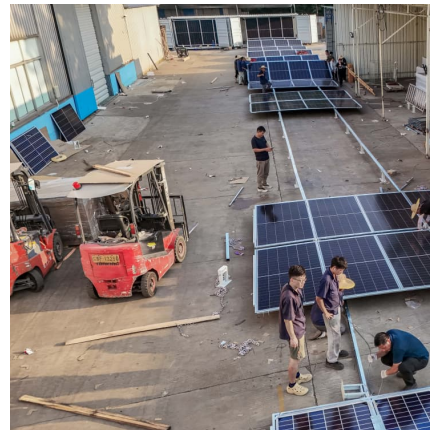
Solar Charge Controller 20A, Intelligent Battery Regulator For Solar

Battery types: This updated controller is suitable for all battery types. Make sure to select the correct battery type i.e B1 for lead-acid, B2 for Li-ion, B3 LiFePO.



[10A/20A/30A PWM Solar Charge Controllers](#)

This charge controller uses the battery voltage to operate its onboard circuitry, including its self-protection and control circuitry. If the controller is not powered on, connecting a live solar panel ...



Solar Charge Controller Settings

Install the controller on a well-ventilated and flat surface. While running, the controller will be heated. This controller is suitable for lithium batteries. All kinds of lead batteries (open, AGM, and gel) are also compatible ...

[PWM Solar Charge Controller User Manual](#)

Please note that the controller is installed on a flat, well ventilated surface. There are lithium battery and lead-acid battery switching function (at the battery type interface, 3 seconds into ...





Contact Us

For catalog requests, pricing, or partnerships, please visit:
<https://conrad.edu.pl>