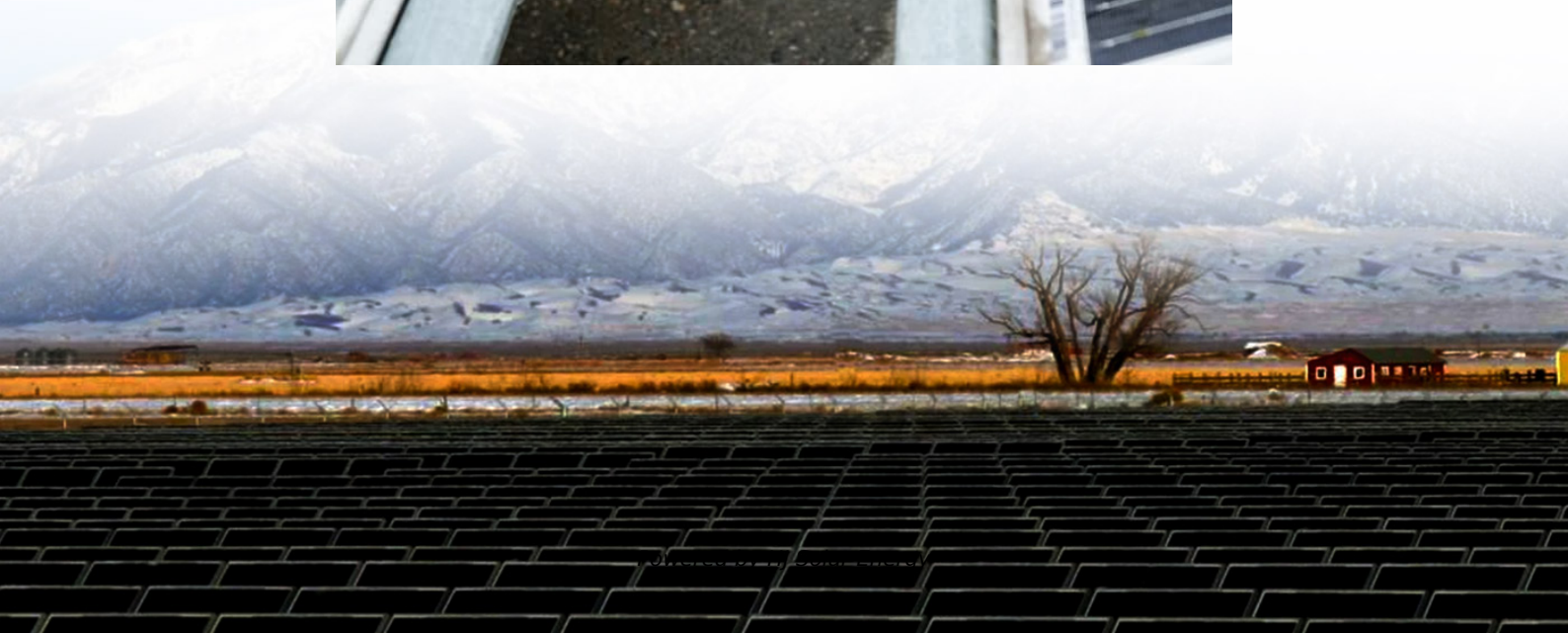


# 99 toyota solara battery keep dieing





## Overview

---

I have a 99 Toyota Solara V6 SLE in pretty good condition. The only ongoing problem I have with it is an Oxygen Sensor Malfunction that I haven't fixed so my Check Engine Light is on. Recently though, the battery has been draining while sitting in the vehicle without it running.

I have a 99 Toyota Solara V6 SLE in pretty good condition. The only ongoing problem I have with it is an Oxygen Sensor Malfunction that I haven't fixed so my Check Engine Light is on. Recently though, the battery has been draining while sitting in the vehicle without it running.

If your Toyota Solara's battery is draining, it's something that'll need addressing right away. If it is draining while your Solara isn't running, something is drawing current that shouldn't be. If the battery drains while driving, there's likely an issue with your car's alternator.

A flat battery has effected the immobilizer on my Toyota avensis. Once the battery has been charged, The car will turn over but won't start , 4 way lights are on and the car alarm is coming on.

There could be several reasons why your Toyota's battery keeps dying. To diagnose the issue accurately, it's best to have a professional auto repair like Brock Automotive inspect your car's electrical system and battery health.

Start the car, and measure the voltage on the battery, if it's below 13, your alternator is the problem. When you turn off the car, measure the voltage across the terminals again, if it drops below 13V immediately, your battery isn't charging.



## 99 toyota solara battery keep dieing

---



### [Toyota Solara Battery Light: Why It's On and How to Fix](#)

Your Solara's battery light can come on at any time while driving if the voltage drops below a certain threshold. You may have noticed your car struggling to start, and the battery light stays on after the start. That would ...

### [SOLVED: I have a 1999 Toyota solara. The battery died.](#)

A flat battery has effected the immobilizer on my Toyota avensis. Once the battery has been charged, The car will turn over but won't start, 4 way lights are on and the car alarm ...



### **Why Does My Battery Keep Dying? Capitol Toyota Auto Care Tips**

Find out why the battery on your car keeps dying and how you should proceed getting this problem fixed from our experts at the Capitol Toyota service center. 1-800-888-1391

### **My 1999 Toyota Solara SE's battery died this morning when I left ...**

Customer: My 1999 Toyota Solara SE's battery died this morning when I left the interior light on. It's obvious that I need to get a new battery, but



do not know the proper way of uninstalling it.

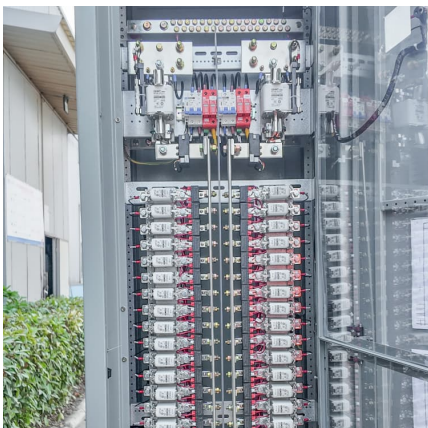


### **I have a '99 Toyota Solara. Starts fine 9 of 10 times. When it won't**

Despite a good battery and cables, check the starter solenoid and ground connections for corrosion or looseness. Inspect the ignition switch and neutral safety switch, as faults here can ...

### Toyota Solara Battery Draining: Causes + Diagnosis

If your Toyota Solara's battery is draining, it's something that'll need addressing right away. If it is draining while your Solara isn't running, something is drawing current that ...



### '99 Solara starter/battery issues. Please help!

I just replaced my alternator and positive battery cable, but something seems like it's drawing power. My car is slow to start, it struggles like the battery's almost dead, but if I ...



### [Toyota Solara Battery Draining: Causes + Diagnosis](#)

A flat battery has effected the immobiliser on my Toyota avensis. Once the battery has been charged, The car will turn over but won't start, 4 way lights are on and the car alarm ...

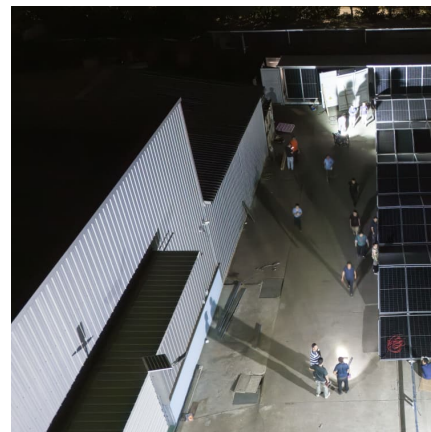


### **Battery Drain Mystery**

If the voltage drops over time it's likely it's not being charged sufficiently to keep up with the drain of starting and operation, or you might have a battery that doesn't hold a ...

### [Toyota Solara Battery Light: Why It's On and How to Fix](#)

Your Solara's battery light can come on at any time while driving if the voltage drops below a certain threshold. You may have noticed your car struggling to start, and the ...



### **99 Solara**

i changed the alternator and the battery and for some reason, the battery light on the cluster is still on. It use to blink randomly on and off but after changing both, it just stays on.



### SolaraGuy o View topic

Start the car, and measure the voltage on the battery, if it's below 13, your alternator is the problem. When you turn off the car, measure the voltage across the terminals ...



### My 1999 Toyota Solara SE's battery died this morning when I left ...

??\$9??· Customer: My 1999 Toyota Solara SE's battery died this morning when I left the interior light on. It's obvious that I need to get a new battery, but do not know the proper way of ...

### [Why Does My Battery Keep Dying? Capitol Toyota ...](#)

Find out why the battery on your car keeps dying and how you should proceed getting this problem fixed from our experts at the Capitol Toyota service center. 1-800-888-1391





### [Why does my Toyota battery keep dying?](#)

There could be several reasons why your Toyota's battery keeps dying. To diagnose the issue accurately, it's best to have a professional auto repair like Brock ...

## Contact Us

---

For catalog requests, pricing, or partnerships, please visit:  
<https://conrad.edu.pl>