

# **70 hours power reserve movement**





## Overview

---

In 2018, Rolex came up with a revolutionary new innovation that would greatly improve the power reserve of most of its watches. This innovation would ultimately lead to Rolex upgrading most of its models t.



## 70 hours power reserve movement

---



### **RM 10,800 Factory warranty**

? RM 10,800 ? Factory warranty till Nov 2027 ?  
Tudor Black Bay Heritage ?? Complete Full Set ?  
Model : 79230N Size : 41mm Year : 2022 Nov  
Condition : Pre Owned Movement : ...

### **Power Reserve - Just In Time**

What Is a Power Reserve? The power reserve of a watch refers to the duration it can operate without being wound or, in the case of automatic watches, without movement. This ...



### [Wait A Minute! Power Reserve Isn't That Important](#)

Sellita's SW200 (and in turn ETA's 2824-2) shouldn't have a 38-hour power reserve not because such a reserve poses an actual problem, but rather because it is lower ...

### [Wait A Minute! Power Reserve Isn't That Important](#)

Sellita's SW200 (and in turn ETA's 2824-2) shouldn't have a 38-hour power reserve not because such a reserve poses an actual problem,



but ...



### Discover 10 Best Watches with Power Reserve Indicator , Ethos

Find the best watches with power reserve indicators, with mechanical power reserve watch options. Dive into the Mechanics of Highest Power Reserve watches. Uncover ...

### [Chinese Forum Watch Project: An Affordable With a ...](#)

The SL6601 is an automatic movement with a date at 6 o'clock and two sub-dials--running seconds at 9 o'clock and a power reserve indicator ...



### Understanding Rolex Power Reserves: How Long Do They Last?

Understanding and maximizing your Rolex's power reserve ensures you enjoy uninterrupted performance and precision. Whether it's the 72-hour reserve of the Daytona or ...



What Is The Power Reserve On A Watch?

On average, most automatic watches have a power reserve of between 36 and 42 hours, some even 50 or 70 hours, meaning that the watch can run for that ...

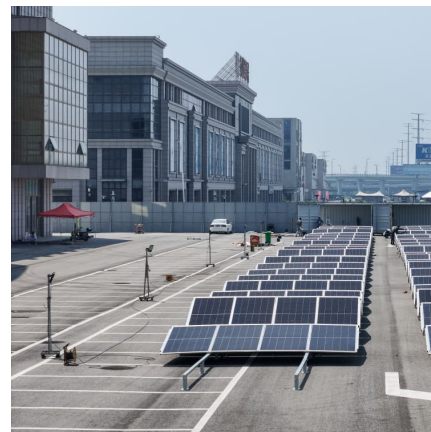


**40 and 80 hours power reserve**

A watch with a 40 hour reserve runs for 40 hours while a watch with an 80 hour reserve runs for 80 hours. There are also 42, 48, 50, 60, 65, 70, and 120 hour reserves. 35-50 ...

Hodinkee Radio: Does A Longer Power Reserve ...

I asked Jack and Danny to plug in their mics and help me talk over this novel need for more and more hours. And from early 8-day Cartiers to ...



**2022 Rolex Sub Date Power Reserve not 70 hours..... : r/rolex**

2022 Rolex Sub Date Power Reserve not 70 hours..... Do any of you guys have this similar issue? I wore my watch everyday since January from approximately 7am - 8pm. I didn't put it ...



### 25 BEST Seiko Automatic Watches Across ALL Collections (2025)

Powered by a slim 6R31 movement (70 hours of power reserve) and featuring a 12.1mm case thickness, 43.6mm lug-to-lug, and 37mm diameter, the new line of King Seiko ...



### [Watch Power Reserve Explained \(Automatic Watches FAQs\)](#)

When buying an automatic watch, one of the important specifications indicated is the power reserve feature. This normally ranges from 36 to 48 hours although there are even some affordable automatic watches with 80-hour power reserves, such as the Powermatic 80 by Tissot. There are ...

### Power Reserve Indicator

It has a movement power reserve indicator (72 hours) and a strikework power reserve indicator (30 hours). Nomos Tangente Power Reserve - Nomos, a watchmaker known for its minimalist ...







### [Tudor in-house Calibers: Complete list and Guide](#)

Tudor in-house caliber MT5602 The Tudor caliber MT5602 was first released in the new Heritage Black Bay model, making the new reference 79230 the first ...



### **From The Comments: Practical Power Reserves And Nothing Less**

Power reserve has been gradually increasing over time, with anything under 40 hours now widely considered dated, if not subpar. Nowadays, 42+ hours is typical, with 72 ...



### **Component breakdown of the new "Clean" Dandong 3285 GMT movement**

After comparison, we found a few differences. The power of genuine movement/clean 3285 movement is about 70 hours, and the power of Shanghai movement is 40 hours Most parts of ...





## Contact Us

---

For catalog requests, pricing, or partnerships, please visit:  
<https://conrad.edu.pl>