

# **48v lithium battery solar charge controller**





## Overview

---

Browse our PWM and MPPT solar charge controllers below that support 48 volt battery systems in off-grid solar applications. 48 volt battery systems support smaller wire sizes and fuses than 12 and 24 volt systems, which saves money for systems with long wire runs.

Browse our PWM and MPPT solar charge controllers below that support 48 volt battery systems in off-grid solar applications. 48 volt battery systems support smaller wire sizes and fuses than 12 and 24 volt systems, which saves money for systems with long wire runs.

100A MPPT Solar Charge Controller 12V 24V 36V 48V LCD Display Battery Intelligent Regulator Max 100V Input Dual USB for Lead-Acid/Lithium. Need help?

Designed to support 12V/24V/36V/48V lithium and lead-acid batteries, LiTime 100A MPPT solar charge controller supports up to 6000W solar input with 150V max. solar input voltage. Whether you're powering a home, cabin, or off-grid system, it ensures fast, efficient charging and stable long-term.

The controller automatically detects 12V, 24V, and 48V system voltages, while 36V systems can be manually configured for flexible setup. This MPPT solar charge controller offers comprehensive protection against PV short circuit, battery overvoltage, overdischarge, load overcurrent, load short.

If you choose a 48V battery, it is important to get a 48V charge controller to ensure the safety of your energy storage. Why do you need a charge controller?

The primary function of a charge controller is protection of a battery from high voltage of panels. If you connect panels to a battery.

Browse our PWM and MPPT solar charge controllers below that support 48 volt battery systems in off-grid solar applications. 48 volt battery systems support



smaller wire sizes and fuses than 12 and 24 volt systems, which saves money for systems with long wire runs. Also, if your system deploys an.

This 50 AMP solar panel controller efficiently increases battery life and improves performance using efficient PWM charging. Designed for remote power solar applications, this advanced charge controller can be used with 48 Volt, 36 Volt, 24 Volt, and 12 Volt lead-acid and AGM batteries, as well as.



## 48v lithium battery solar charge controller

---



### 48 Volt Solar Charge Controllers

Browse our PWM and MPPT solar charge controllers below that support 48 volt battery systems in off-grid solar applications. 48 volt battery systems support smaller wire sizes and fuses than ...

### [50 AMP, 12V/24V/36V/48V PWM Solar Charge ...](#)

Designed for remote power solar applications, this advanced charge controller can be used with 48 Volt, 36 Volt, 24 Volt, and 12 Volt lead-acid and AGM batteries, as well as 12 Volt lithium batteries.



### [50 AMP, 12V/24V/36V/48V PWM Solar Charge Controller](#)

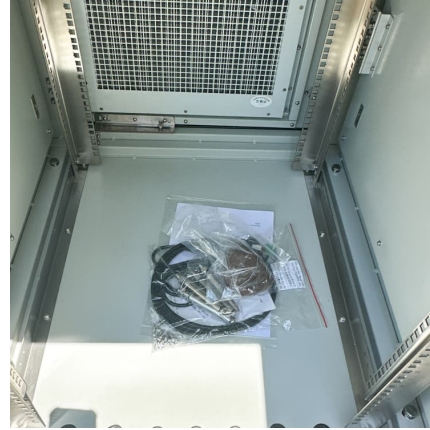
Designed for remote power solar applications, this advanced charge controller can be used with 48 Volt, 36 Volt, 24 Volt, and 12 Volt lead-acid and AGM batteries, as well as 12 Volt lithium ...

### Amazon : LiTime 100A (12v/24v/36v/48v) Solar Charge Controller ...

Designed to support 12V/24V/36V/48V lithium and lead-acid batteries, LiTime 100A MPPT solar charge controller supports up to 6000W solar



input with 150V max. solar input voltage.



### [12V/24V/48V Auto 100A 250V MPPT Solar Charge Controller](#)

The customizable charging current limit ensures compatibility with a wide range of battery types, providing safe and efficient charging. The controller automatically detects 12V, 24V, and 48V ...



### **48v Solar Charge Controller for sale , 48v battery charge ...**

Browse our PWM and MPPT solar charge controllers below that support 48 volt battery systems in off-grid solar applications. 48 volt battery systems support smaller wire sizes and fuses than ...



### **MPPT**

With the ability to use lower voltage (12V to 24V) solar panels with 36V or 48V batteries, our MPPT-Boost Controller is the industry's most efficient voltage-boosting solar charge controller.





### Amazon : Solar Charge Controller 48v

PowMr 30A PWM Solar Charge Controller, 12V 24V 36V 48V Auto, LCD Display and Dual USB Output, Fit for AGM, Gel, FLD, Lead-Acid and Lithium Battery?Update Version?



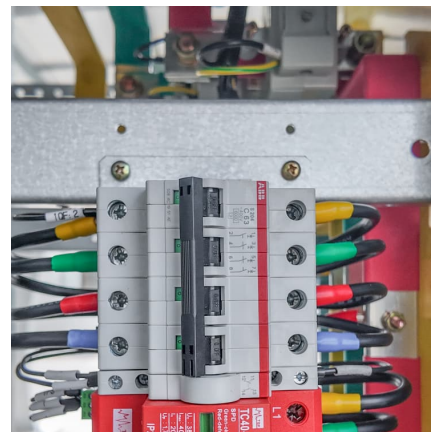
### 48v Solar Charge Controller for sale , 48v battery charge controllers

48V charge controllers are both well-suited for lead-acid batteries, as well as for lithium-ion batteries. The only difference is that lead-acid battery capacity is measured in amp ...



### [Amazon : LiTime 100A \(12v/24v/36v/48v\) Solar ...](#)

Designed to support 12V/24V/36V/48V lithium and lead-acid batteries, LiTime 100A MPPT solar charge controller supports up to 6000W solar input with 150V max. solar input voltage.



### [LiTime 100A MPPT Solar Charge Controller 12V/24V/36V/48V](#)

Built for off-grid systems and home backup needs, LiTime 12-48V 100A solar charge controller keeps your power stable no matter the location. From remote cabins to home solar ...

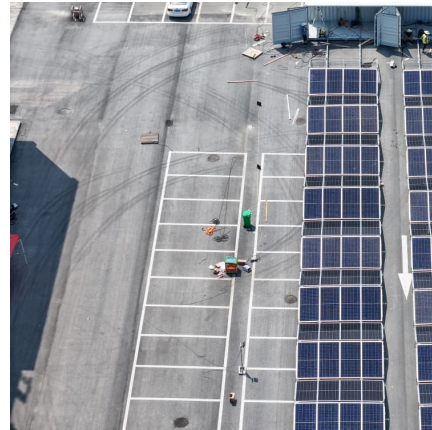


### [12V/24V/48V Auto 100A 250V MPPT Solar Charge](#)

...

The customizable charging current limit ensures compatibility with a wide range of battery types, providing safe and efficient charging. The controller automatically detects 12V, 24V, and 48V system voltages, while 36V systems can be

...



### [LiTime 100A MPPT Solar Charge Controller ...](#)

Built for off-grid systems and home backup needs, LiTime 12-48V 100A solar charge controller keeps your power stable no matter the location. From remote cabins to home solar setups--and even RVs--it delivers high-efficiency

...

### **I Tested the Best 48V Solar Charge Controller: Here's Why It's a ...**

A 48V solar charge controller is an essential component in any solar energy system. It regulates the voltage and current from your solar panels to ensure that your batteries are charged

...





## Contact Us

---

For catalog requests, pricing, or partnerships, please visit:  
<https://conrad.edu.pl>