

# 25ah solar battery





## 25ah solar battery

---



### [12V 25Ah LiFePO4 Battery, Up to 3000 Deep Cycles ...](#)

About this item [10+ Year Lifespan] The GRNOE 12V 25Ah battery uses advanced Grade A+ LiFePO4 battery cells, with a cycle life 3000~15000 times. More than 10 times higher than 12V ...

### [HiXiMi 3.2V 25Ah LiFePO4 Cell Battery Review](#)

Look no further than the HiXiMi 3.2V 25Ah LiFePO4 Cell Battery. Designed with lithium iron phosphate technology, this battery provides a reliable and stable voltage output, making it ...



### **Amazon : 48V (51.2V) 25Ah LiFePO4 Battery, BCI Group 24 ...**

Typically, one 48V 25Ah battery is equivalent to four 12V 25Ah batteries, providing you with a powerful backup power source with 2x the runtime for your off-grid solar ...

### **GreenOE 12V 25Ah LiFePO4 Battery, Up to 3000 Deep Cycles ...**

GreenOE 12V 25Ah LiFePO4 Lithium Battery -- A lightweight, high-energy-density upgrade from bulky lead-acid batteries, designed for effortless



portability and installation.



### **48V (51.2V) 25Ah Lithium LiFePO4 Battery for Trolling Motor, RV, Solar**

This 48V 25AH LiFePO4 battery offers high performance, broad applicability, high safety, environmental protection and energy saving, low maintenance requirements, long cycle life, ...



### **Dakota Lithium Battery 12V 25Ah**

Our team of solar professionals is here to help you navigate the world of solar with ease. From selecting the perfect solar kit to installation and beyond, we provide support and expertise at ...



### **Dakota Lithium Battery 12V 25Ah**

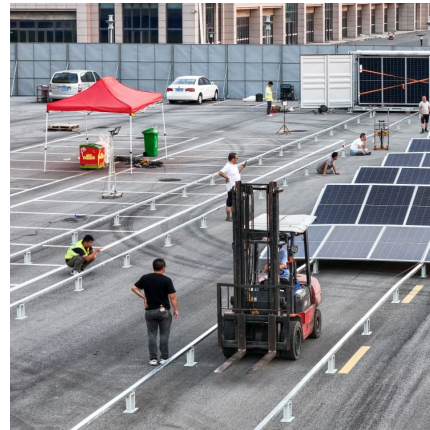
Our team of solar professionals is here to help you navigate the world of solar with ease. From selecting the perfect solar kit to installation and beyond, we provide support and expertise at every step of the journey.





### **ERYY 12V 25AH LiFePO4 Battery**

ERYY's 12V lithium iron phosphate battery, with a 25Ah capacity, powers various devices such as fish finders, lighting systems, solar setups, water pumps, alarm systems, ham radios, and ...



### **12V 25Ah LiFePO4 Lithium Iron Phosphate Deep Cycle Battery**

It is perfect for e-scooters, e-bikes, solar applications, robots, and other applications that require a higher-energy density battery. The battery comes with integrated M5 Copper Terminal Screw, ...

## **Contact Us**

---

For catalog requests, pricing, or partnerships, please visit:  
<https://conrad.edu.pl>