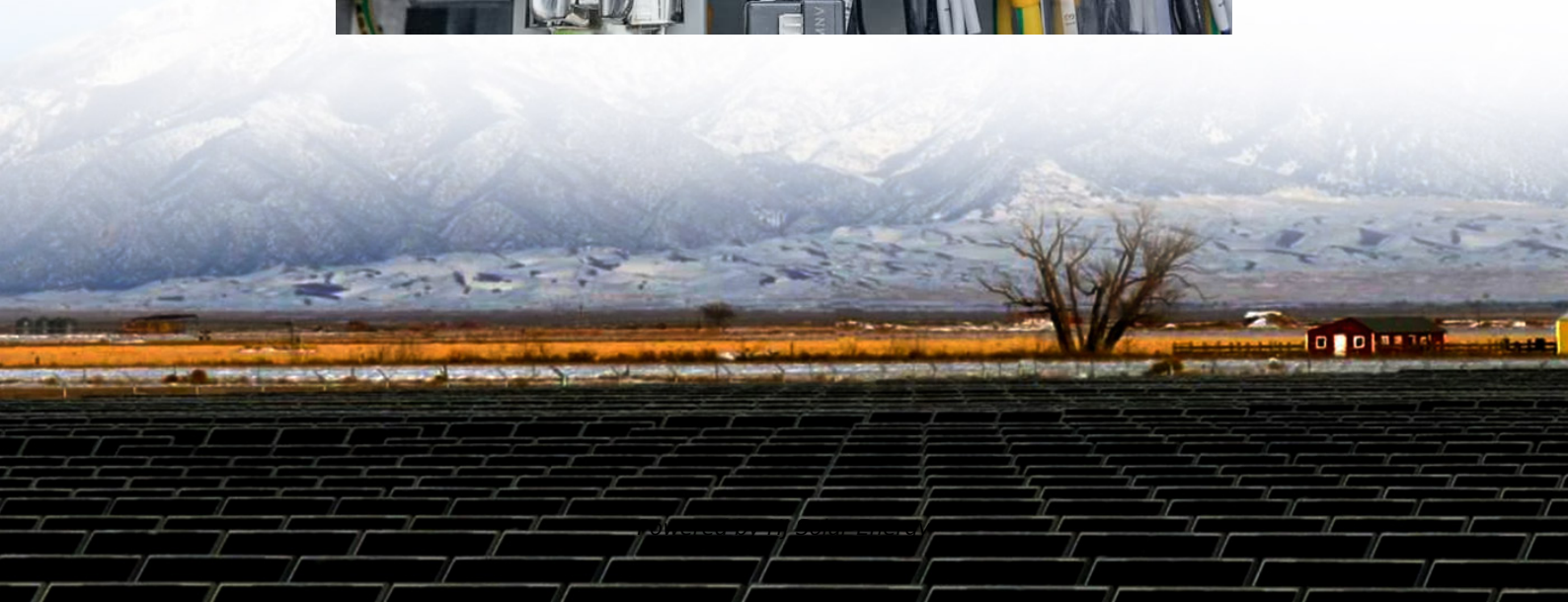
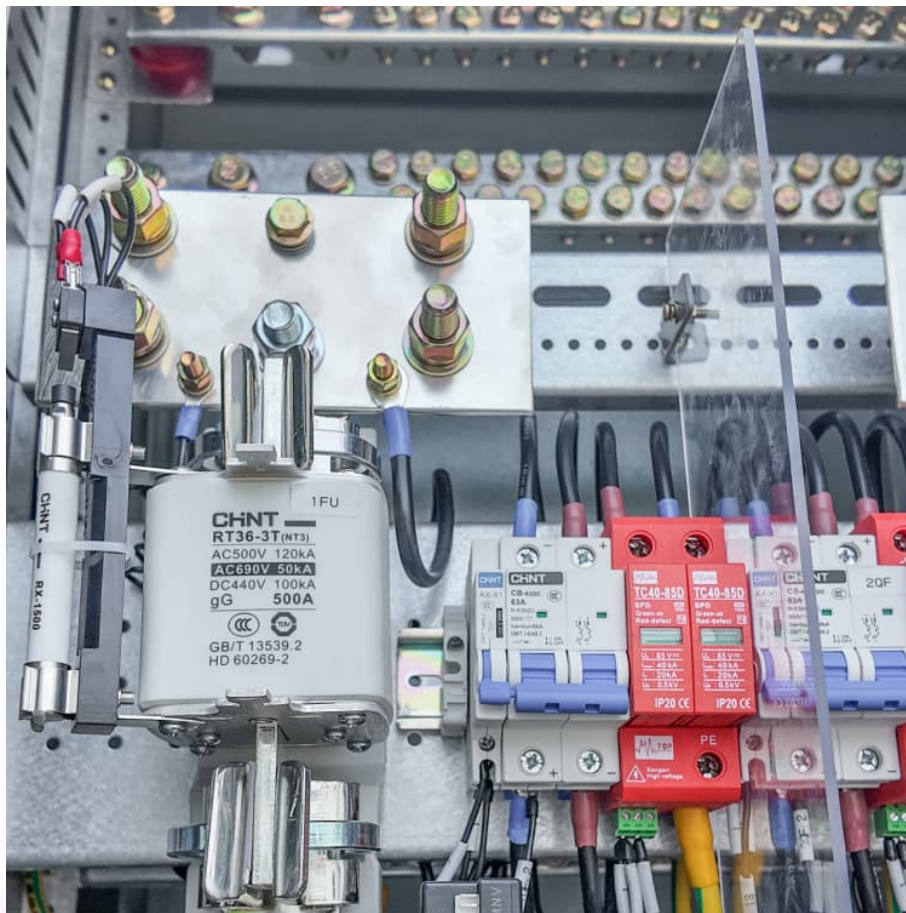


# 20v battery solid red light but not charged





## Overview

---

If your DeWALT charger keeps showing a solid red light to let you know the battery is at 100%, even though it's not charging, here's what to do about it. But before you read this article, you may want to know the different meanings of the indicator lights on a DeWALT battery charger.

If your DeWALT charger keeps showing a solid red light to let you know the battery is at 100%, even though it's not charging, here's what to do about it. But before you read this article, you may want to know the different meanings of the indicator lights on a DeWALT battery charger.

If your DeWALT charger keeps showing a solid red light to let you know the battery is at 100%, even though it's not charging, here's what to do about it. But before you read this article, you may want to know the different meanings of the indicator lights on a DeWALT battery charger. I have made a

It has LED lights that indicate charging status, including a solid red light when the battery isn't charging. There are several reasons why this may happen, including dirty battery terminals, loose connections, or using the wrong charger. By identifying the cause of the problem, you can take the

In today's video we will show you How To Fix Dewalt Charger Showing the Solid Red Light But Still Not Charging. Listen the video carefully, firstly get to know the meaning of the topic of our video and then follow the steps to solve the problem. Hello everyone! In today's video we will show.

In this guide, we will walk you through the most common reasons why your DeWalt charger is not charging and what you can do to fix it. We will also provide some tips on how to prevent this from happening in the future. DeWalt 20V MAX Battery Charger is a versatile charging solution for your power.

Most of these users have been experiencing a similar issue where their DeWalt charger gives a solid red light but is not charging. As annoying as the issue may sound, it can actually be fixed. All you need to do is to follow the troubleshooting steps mentioned below: In case you are getting a red.



The solid red light on your DeWalt charger can mean a few different things depending on the specific charger model and circumstances. Understanding these implications can help you act effectively. A solid red light on your DeWalt charger typically indicates that the charger is providing power to. What does it mean if a battery light is red?

When the light is red, it means that the battery is charging. When the light turns green, it means that the battery is fully charged. If the light is flashing red or green, it means that there is an error with the charger or the battery. If your charger has a solid red light, it means that the battery is charging.

Why is my hart 20V battery flashing red?

Hart 20v battery charger flashing red light indicates an error in charging, or the battery may have been inserted incorrectly into the charger, or the charger or battery may be faulty. How do you fix a battery that won't charge?

Why is my DeWalt battery showing a solid red light?

A Dewalt battery showing solid red light means the battery is charging. If your Dewalt battery is not charging and is dead yet showing a solid red light, there can be a few reasons behind it. Here are the common reasons why the Dewalt charger is showing a solid red light and not charging with the solution to it-.

Why is my Charger displaying a red light but not charging?

The first thing you want to check if your charger is displaying a solid red light but not charging is whether or not the battery was properly added to the charger. If the battery was not properly inserted, then it will not charge.

Why is my DeWalt Charger displaying a red light but not charging?

When faced with a Dewalt charger displaying a solid red light but not charging, it is important to approach the situation systematically. Start by inspecting the charger's indicator light for color and behavior. A solid red light typically indicates power reception, but an obstacle may prevent charging.

What does a blinking red light on a car battery mean?

The blinking red light indicated multiple issues that hindered to charging of the battery. It may indicate a faulty charger, faulty power connectors between



the battery and charger, or high/low battery temperature. Solid red light indicates that there is no sign of life in the battery and it is empty or not holding charge.



## 20v battery solid red light but not charged

---



### DeWalt Charger Solid Red Light But Not Charging: What to Do?

A solid red light on your DeWalt charger typically indicates that the charger is providing power to the battery but is not charging it as expected. Here are some common ...

### DeWalt Charger Solid Red Light But Not Charging

In summary, if you are experiencing a solid red light on your DeWalt charger and it is not charging your battery, try troubleshooting the issue by checking for dirt or debris on the ...



### Decoding the Solid Red Light on Your DeWalt Charger: A ...

A solid red light on your DeWalt charger typically indicates that the charger is providing power to the battery but is not charging it as expected. Here are some common ...

### DeWALT Charger Solid Red Light but Not Charging: 4 Solutions I ...

If your DeWALT charger keeps showing a solid red light to let you know the battery is at 100%, even though it's not charging, here's what to do



about it. But before you ...



### **DeWalt Charger Solid Red Light But Not Charging: What to Do?**

A solid red light on a DeWalt battery charger typically indicates that the charger is not receiving power. This could be due to a problem with the outlet, the power cord, or the ...



### **10 Ways To Fix DeWalt Charger Solid Red Light But Not Charging**

Most of these users have been experiencing a similar issue where their DeWalt charger gives a solid red light but is not charging. As annoying as the issue may sound, it can ...



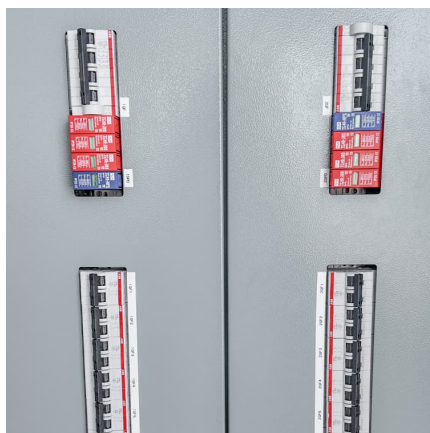
### [Hart Battery Not Charging - Quick Fix!](#)

If it shows the lower voltage reading that your 12V charger converts to output, it means it's faulted and not capable of charging your Hart 20V battery. It needs to fix the issue or be replaced with a new one.



### Dewalt Charger Solid Red Light But Not Charging: Best Guide

Is your Dewalt Charger Solid Red Light But Not Charging? Don't worry. The following article will guide you with every solution to it. Follow along!



### [Hart Battery Not Charging - Quick Fix!](#)

If it shows the lower voltage reading that your 12V charger converts to output, it means it's faulted and not capable of charging your Hart 20V battery. It needs to fix the issue or ...

### [Dewalt Charger Solid Red Light But Not Charging: ...](#)

Many Dewalt users have faced this frustrating battery issue. We will dewalt the battery charger's solid red light, not the charging solution guide. We will provide a step-by-step guide to troubleshoot the Dewalt charger solid ...



### [Dewalt Charger Solid Red Light But Not Charging](#)

In summary, if you are experiencing a solid red light on your DeWalt charger and it is not charging your battery, try troubleshooting the issue by checking for dirt or debris on the battery terminals and loose connections ...



### Dewalt Charger Solid Red Light But Not Charging: Solutions And ...

Many Dewalt users have faced this frustrating battery issue. We will dewalt the battery charger's solid red light, not the charging solution guide. We will provide a step-by-step ...



### [Dewalt Charger Solid Red Light But Not Charging: ...](#)

Is your Dewalt Charger Solid Red Light But Not Charging? Don't worry. The following article will guide you with every solution to it. Follow along!



## Contact Us

---

For catalog requests, pricing, or partnerships, please visit:  
<https://conrad.edu.pl>