

# **12v solar panel battery maintainer dies not work**





## Overview

---

Ensure the solar panel is positioned in direct sunlight without obstructions. Check and clean all wiring connections. Test voltage output of the solar panel using a multimeter. Inspect the charge controller for faults or error indicators.

Ensure the solar panel is positioned in direct sunlight without obstructions. Check and clean all wiring connections. Test voltage output of the solar panel using a multimeter. Inspect the charge controller for faults or error indicators.

The Main Reasons your 12V Solar Panel may not be working are Wrong Wiring; Faulty Panel; Faulty Equipment; Bad Environment and many other trivial things. First of all, you have to identify the issue and then troubleshoot it. So the first step is to learn a bit about how a 12V solar panel work. Then.

I stuck on a (stupid) battery charging problem with my solar panel. Indeed, even in direct sunlight, the battery does not recharge. When I connect the mains charger (15a), it works on the other hand, it charges correctly and I see it via the battery application (bms). 4s 12v 150ah battery with home.

If you're experiencing battery problems, it could be due to overcharging, undercharging, or sulfation. If you notice your battery is getting hot or bubbling, it's likely overcharging. The best way to prevent overcharging is to install a charge controller like the ROCKSOLAR 30A PWM Solar Charge.

As the name implies, a “solar battery trickle charger maintainer” is a solar-powered device that is used to charge batteries. Trickle charges have been in use for decades. However, solar-powered variants are a relatively new technology. A trickle charger is a safe and effective way to ensure that.

I'm looking for a recommendation for a solar battery maintainer/charger which you have actually used and that works. I'm done experimenting and returning. Join the #1 RV Forum Today - It's Totally Free! iRV2.com RV Community - Are you about to start a new improvement on your RV or need some help.

Ensure the solar panel is positioned in direct sunlight without obstructions. Check and clean all wiring connections. Test voltage output of the solar panel



using a multimeter. Inspect the charge controller for faults or error indicators. Verify that the battery itself is functional and capable of. Why do I need a solar battery charger maintainer?

The ROCKSOLAR 10W 12V Solar Battery Charger Maintainer can help prevent sulfation. If your solar panels are not producing enough power, it could be due to shading, dirty panels, or panel damage. If your solar panels are partially shaded, they may not produce enough power.

How do I troubleshoot a solar battery system?

How to Troubleshoot a Solar Battery System: To troubleshoot a solar battery system, first check the battery's voltage and connections. Ensure the charge controller and inverter are functioning correctly, and inspect for any visible damage or wear. Interested in getting the most out of your solar battery system?

.

When should I call a professional to troubleshoot my solar battery?

You should consider calling a professional to troubleshoot your solar battery system under the following circumstances: Persistent Efficiency Issues: If your battery charges slowly, discharges too quickly, or has a reduced capacity that affects its ability to power your home.

Why is my solar battery not charging?

The ROCKSOLAR 12V 50Ah Deep Cycle LiFePO4 Battery with BMS System is a reliable choice for off-grid solar systems. If your battery is not charging to its full capacity, it could be due to sulfation, a buildup of lead sulfate crystals on the battery plates. The ROCKSOLAR 10W 12V Solar Battery Charger Maintainer can help prevent sulfation.

Why is my solar power system not working on the road?

When you're on the road, you may encounter some issues with your solar power system, and it's important to know how to address them. Your battery is the heart of your off-grid solar system, and it's critical to keep it healthy. If you're experiencing battery problems, it could be due to overcharging, undercharging, or sulfation.

How to fix a faulty solar charge controller?



Resetting Solar Charge Controller is one of the most common solutions if your Solar Charge Controller is not working properly. Also if resetting doesn't fix the problems with Charge Controller consider replacing them. The best advice I can give is to replace them. Fixing faulty equipment is a hassle in itself.



## 12v solar panel battery maintainer dies not work

---

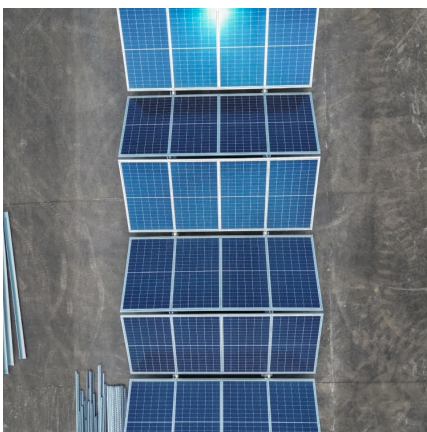
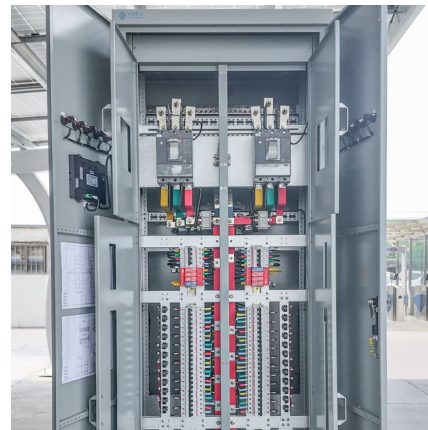


### [Choosing a Solar Battery Trickle Charger Maintainer](#)

The only real downside of solar battery trickle chargers is that they only work during daylight hours when they are exposed to direct sunlight. Fortunately, there is a way to remedy this shortcoming.

### [How To Troubleshoot A Solar Battery System?](#)

How to Troubleshoot a Solar Battery System: To troubleshoot a solar battery system, first check the battery's voltage and connections. Ensure the charge controller and inverter are functioning ...



### **Troubleshooting Your Off-Grid Solar System: Common Issues ...**

If your battery is not charging to its full capacity, it could be due to sulfation, a buildup of lead sulfate crystals on the battery plates. The ROCKSOLAR 10W 12V Solar Battery Charger ...

### [How To Troubleshoot A Solar Battery System?](#)

How to Troubleshoot a Solar Battery System: To troubleshoot a solar battery system, first check the battery's voltage and connections. Ensure the charge controller and inverter are functioning



correctly, and inspect for any visible ...



### [Troubleshooting Your Off-Grid Solar System: ...](#)

If your battery is not charging to its full capacity, it could be due to sulfation, a buildup of lead sulfate crystals on the battery plates. The ROCKSOLAR 10W 12V Solar Battery Charger Maintainer can help prevent sulfation.

### [12V Camping Solar Panel Troubleshooting Guide](#)

Position panels optimally for sunlight exposure throughout the day. Following this guide can help diagnose and resolve common 12V camping solar panel issues, ensuring ...



### [12V Solar Panel Not Working: Reasons and Fixes](#)

Resetting Solar Charge Controller is one of the most common solutions if your Solar Charge Controller is not working properly. Also if resetting doesn't fix the problems with Charge ...

### [12V Solar Panel Not Working: Reasons & Fixes](#)



The two main causes are 'Broken Solar Charge Controller' and 'Broken Solar Inverter'. If you are using a solar array, one busted panel in any of them will also cause zero voltage issues.



### Solar 12 Volt Battery Maintainer

Can I start/drive my vehicle while the unit is connected to the battery? No, for safety reasons please make sure the panel is not in use while you are using your vehicle.

### [Solar panel, 12v battery charging problem](#)

Hello everyone, I stuck on a (stupid) battery charging problem with my solar panel. Indeed, even in direct sunlight, the battery does not recharge. When I



## Contact Us

For catalog requests, pricing, or partnerships, please visit:  
<https://conrad.edu.pl>